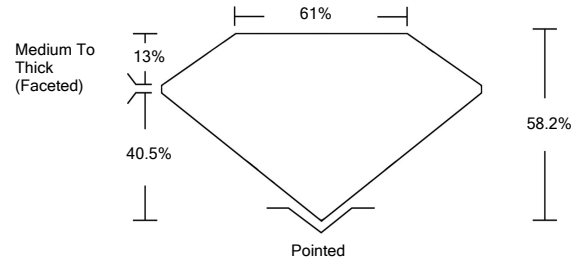




LG468172811

LABORATORY GROWN DIAMOND REPORT

PROPORTIONS



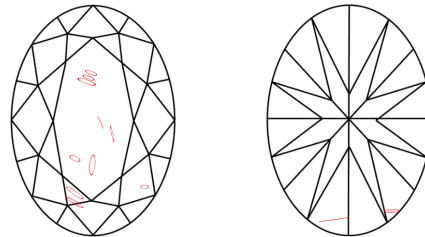
GRADING SCALES

Table with 5 columns for Color Grading Scale (CL to LT) and Clarity (10x) Grading Scale (FL to I).

The laboratory grown diamond described in this Report (Report) has been graded, tested, analyzed, examined and/or inscribed by International Gemological Institute (IGI). A laboratory grown diamond is one that has essentially the same chemical, physical and optical properties as a mined diamond...

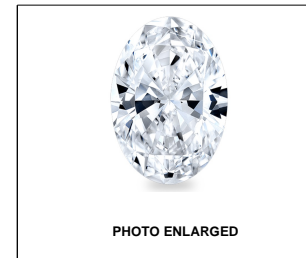
© INTERNATIONAL GEMOLOGICAL INSTITUTE, INC.

CLARITY CHARACTERISTICS



KEY TO SYMBOLS

Red symbols indicate internal characteristics. Green symbols indicate external characteristics.



LABGROWN IGI LG468172811

LASERSCRIBE<sup>SM</sup>

03/25/2021

IGI Report Number LG468172811

Shape and Cutting Style OVAL BRILLIANT

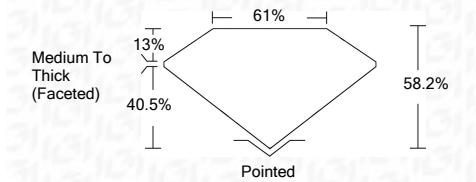
Measurements 9.83 x 7.35 x 4.28 mm

GRADING RESULTS

Carat Weight 2.01 CARATS

Color Grade G

Clarity Grade SI 2



ADDITIONAL GRADING INFORMATION

Polish EXCELLENT

Symmetry EXCELLENT

Fluorescence NONE

Inscription(s) LABGROWN IGI LG468172811

Comments: As Grown - No indication of post-growth treatment. This Laboratory Grown Diamond was created by High Pressure High Temperature (HPHT) growth process. Type II



IGI

03/25/2021 IGI Report No. LG468172811 OVAL BRILLIANT 2.01 CARATS G 812 88.2% 61% Medium To Thick (Faceted) Pointed EXCELLENT EXCELLENT NONE LABGROWN IGI LG468172811

As Grown - No indication of post-growth treatment. This Laboratory Grown Diamond was created by High Pressure High Temperature (HPHT) growth process. Type II

