



LABORATORY GROWN DIAMOND REPORT

LG468172809

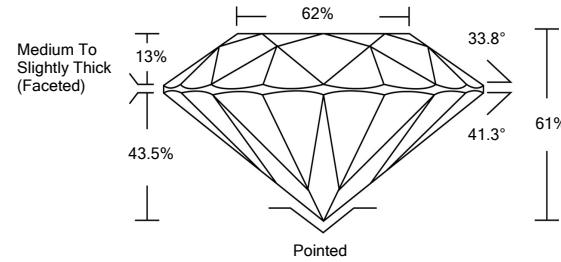
GRADING SCALES

Table with 5 columns for Color Grading Scale (CL, NC, FT, VLT, LT) and Clarity (10x) Grading Scale (FL, IF, VVS, VS, SI, I).

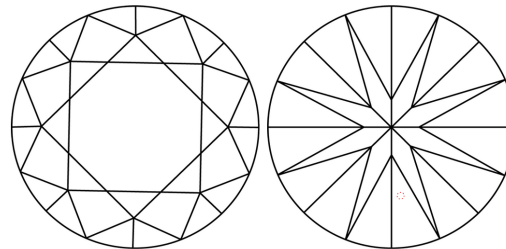
The laboratory grown diamond described in this Report (Report) has been graded, tested, analyzed, examined and/or inscribed by International Gemological Institute (IGI). A laboratory grown diamond is one that has essentially the same chemical, physical and optical properties as a mined diamond...

© INTERNATIONAL GEMOLOGICAL INSTITUTE, INC.

PROPORTIONS

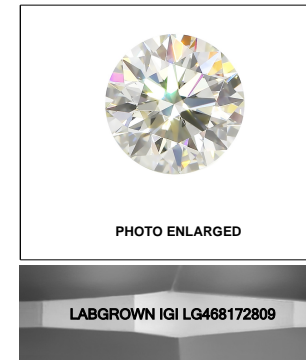


CLARITY CHARACTERISTICS



KEY TO SYMBOLS

Red symbols indicate internal characteristics. Green symbols indicate external characteristics.



LASERSCRIBE SM

03/25/2021

IGI Report Number LG468172809

Shape and Cutting Style ROUND BRILLIANT

Measurements 6.77 - 6.80 x 4.14 mm

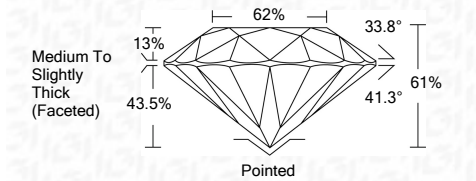
GRADING RESULTS

Carat Weight 1.18 CARAT

Color Grade E

Clarity Grade VVS 1

Cut Grade EXCELLENT



ADDITIONAL GRADING INFORMATION

Polish EXCELLENT

Symmetry EXCELLENT

Fluorescence NONE

Inscription(s) LABGROWN IGI LG468172809

Comments: As Grown - No indication of post-growth treatment. This Laboratory Grown Diamond was created by High Pressure High Temperature (HPHT) growth process. Type II



Summary table of report details: IGI Report No. LG468172809, ROUND BRILLIANT, 6.77 - 6.80 x 4.14 mm, 1.18 CARAT, Color Grade E, Clarity Grade VVS 1, Cut Grade EXCELLENT, Depth 61%, Table 62%, Girdle Medium To Slightly Thick (Faceted), Culet Pointed, Polish EXCELLENT, Symmetry EXCELLENT, Fluorescence NONE, Inscription(s) LABGROWN IGI LG468172809.

03/25/2021

IGI Report No. LG468172809

ROUND BRILLIANT

6.77 - 6.80 x 4.14 mm

1.18 CARAT

E

VVS 1

EXCELLENT

61%

62%

Medium To Slightly Thick (Faceted)

Pointed

EXCELLENT

EXCELLENT

NONE

LABGROWN IGI LG468172809

As Grown - No indication of post-growth treatment.

This Laboratory Grown Diamond was created by High Pressure High Temperature (HPHT) growth process.

Type II

