



IGI GEMOLOGICAL REPORT

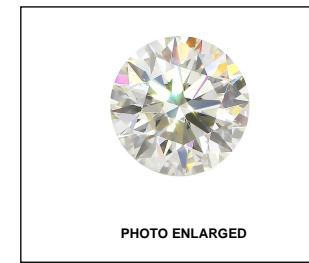
ADDITIONAL INFORMATION

GRADING SCALES

Table with 2 main sections: COLOR GRADING SCALE and CLARITY (10x) GRADING SCALE. Includes categories like CL, NC, FT, VLT, LT and FL, IF, VVS, VS, SI, I.

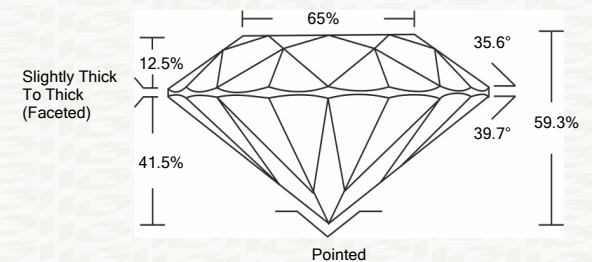
The laboratory grown diamond described in this Report (Report) has been graded, tested, analyzed, examined and/or inscribed by International Gemological Institute (IGI). A laboratory grown diamond is one that has essentially the same chemical, physical and optical properties as a mined diamond...

© INTERNATIONAL GEMOLOGICAL INSTITUTE, INC.

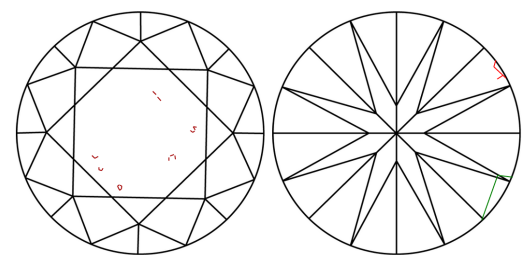


LASERSCRIBE SM

PROPORTIONS



CLARITY CHARACTERISTICS



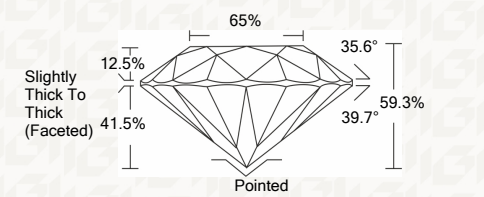
KEY TO SYMBOLS

Red symbols indicate internal characteristics. Green symbols indicate external characteristics.

This Report is subject to the terms and conditions © IGI 2000, edition 2019 all rights reserved.

IGI LABORATORY GROWN DIAMOND GRADING REPORT

11/04/2020 IGI Report Number LG447091303 Shape and Cutting Style ROUND BRILLIANT Measurements 7.27 - 7.32 X 4.33 MM GRADING RESULTS Carat Weight 1.50 CARAT Color Grade I Clarity Grade VS 2 Cut Grade VERY GOOD



ADDITIONAL GRADING INFORMATION Polish VERY GOOD Symmetry VERY GOOD Fluorescence NONE Inscription(s) LABGROWN IGI LG447091303

Comments: This Laboratory grown diamond was created by chemical vapor deposition process (CVD). Type IIa



11/04/2020 IGI Report No. LG447091303 ROUND BRILLIANT 7.27 - 7.32 X 4.33 MM Carat Weight 1.50 CARAT Color Grade I Clarity Grade VS 2 Cut Grade VERY GOOD Depth 59.3% Table 65% Girdle Slightly Thick To Thick (Faceted) Culet Pointed Polish VERY GOOD Symmetry VERY GOOD Fluorescence NONE Inscription(s) LABGROWN IGI LG447091303 Comments: This Laboratory grown diamond was created by chemical vapor deposition process (CVD). Type IIa

THE DOCUMENT WAS PRODUCED WITH THE FOLLOWING SECURITY MEASURES: SPECIAL DOCUMENT PAPER, INK SCREENS, WATERMARK BACKGROUND DESIGNS HOLOGRAM AND OTHER SECURITY FEATURES NOT LISTED AND DO EXCEED DOCUMENT SECURITY INDUSTRY GUIDELINES