



LABORATORY GROWN DIAMOND REPORT

LG464182259

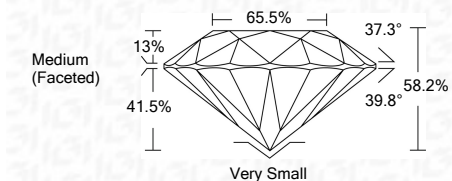
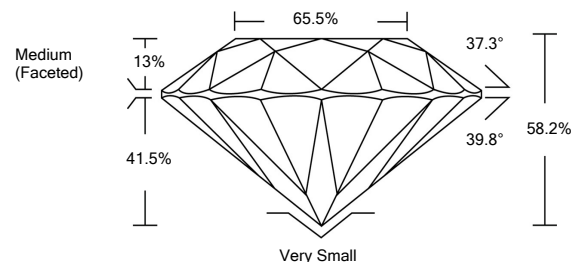
GRADING SCALES

Table with 5 columns for Color Grading Scale (CL, NC, FT, VLT, LT) and Clarity (10x) Grading Scale (FL, IF, VVS, VS, SI, I) with corresponding descriptions.

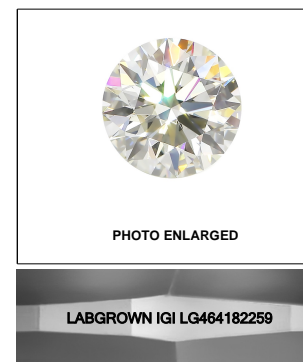
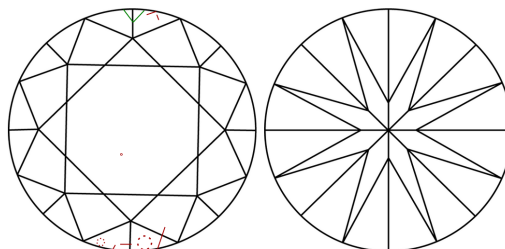
The laboratory grown diamond described in this Report (Report) has been graded, tested, analyzed, examined and/or inscribed by International Gemological Institute (IGI). A laboratory grown diamond is one that has essentially the same chemical, physical and optical properties as a mined diamond...

02/17/2021
IGI Report Number LG464182259
Shape and Cutting Style ROUND BRILLIANT
Measurements 9.24 - 9.36 x 5.43 mm
GRADING RESULTS
Carat Weight 3.00 CARATS
Color Grade F
Clarity Grade VS 2
Cut Grade VERY GOOD

PROPORTIONS



CLARITY CHARACTERISTICS



KEY TO SYMBOLS

Red symbols indicate internal characteristics. Green symbols indicate external characteristics.

LASERSCRIBE SM



ADDITIONAL GRADING INFORMATION
Polish EXCELLENT
Symmetry VERY GOOD
Fluorescence NONE
Inscription(s) LABGROWN IGI LG464182259

Comments: This Laboratory Grown Diamond was created by Chemical Vapor Deposition (CVD) growth process and may include post-growth treatment. Type IIa



IGI

02/17/2021
IGI Report No. LG464182259
ROUND BRILLIANT
Carat Weight 3.00 CARATS
Color Grade F
Clarity Grade VS 2
Depth 58.2%
Table 65.5%
Girdle Medium (Faceted)
Culet Very Small
Polish EXCELLENT
Symmetry VERY GOOD
Fluorescence NONE
Inscription(s) LABGROWN IGI LG464182259
Comments: This Laboratory Grown Diamond was created by Chemical Vapor Deposition (CVD) growth process and may include post-growth treatment. Type IIa

