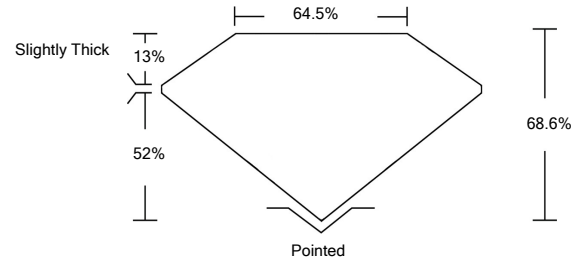




LG474108047

LABORATORY GROWN DIAMOND REPORT

PROPORTIONS



GRADING SCALES

Table with 5 columns for Color Grading Scale (CL to LT) and Clarity (10x) Grading Scale (FL to I). Color scale includes Colorless D-F, Near Colorless G-J, Faint K-M, Very Light N-R, and Light S-Z. Clarity scale includes Flawless Internally Flawless, Very Very Slightly Included, Very Slightly Included, Slightly Included, and Included.

The laboratory grown diamond described in this Report (Report) has been graded, tested, analyzed, examined and/or inscribed by International Gemological Institute (IGI). A laboratory grown diamond is one that has essentially the same chemical, physical and optical properties as a mined diamond, with the exception of being grown by man (a manufactured product). IGI employs and utilizes those techniques and equipment currently available to IGI, including, without limitation, 10X magnification, corrected triplet loupe, binocular microscope, master color comparison stones, non-contact-optical measuring device, Diamond Sure™, Diamond View™, Spectrophotometer and such other instruments and/or processes as deemed appropriate by IGI. This Report includes advanced security features. A duly accredited gemologist or jeweler can advise you with respect to the importance of and interrelationship between cut, color, clarity and carat weight.

© INTERNATIONAL GEMOLOGICAL INSTITUTE, INC.

04/27/2021

IGI Report Number: LG474108047  
Shape and Cutting Style: CUT CORNERED RECTANGULAR MODIFIED BRILLIANT

Measurements: 8.23 x 6.59 x 4.52 mm

GRADING RESULTS

Carat Weight: 2.02 CARATS  
Color Grade: I  
Clarity Grade: VS 2

04/27/2021  
IGI Report Number: LG474108047

Shape and Cutting Style: CUT CORNERED RECTANGULAR MODIFIED BRILLIANT

Measurements: 8.23 x 6.59 x 4.52 mm

GRADING RESULTS

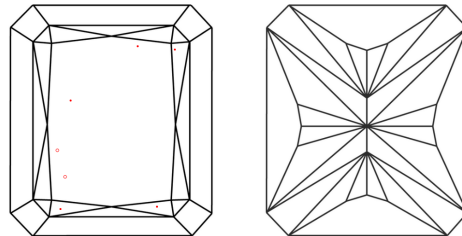
Carat Weight: 2.02 CARATS  
Color Grade: I  
Clarity Grade: VS 2

ADDITIONAL GRADING INFORMATION

Polish: EXCELLENT  
Symmetry: EXCELLENT  
Fluorescence: NONE  
Inscription(s): LABGROWN IGI LG474108047

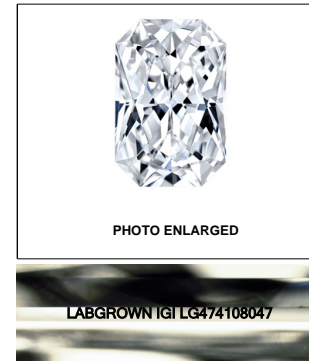
Comments: This Laboratory Grown Diamond was created by Chemical Vapor Deposition (CVD) growth process and may include post-growth treatment. Type IIa

CLARITY CHARACTERISTICS

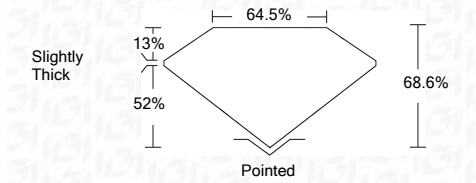


KEY TO SYMBOLS

Red symbols indicate internal characteristics.  
Green symbols indicate external characteristics.



LASERSCRIBE<sup>SM</sup>



ADDITIONAL GRADING INFORMATION

Polish: EXCELLENT  
Symmetry: EXCELLENT  
Fluorescence: NONE  
Inscription(s): LABGROWN IGI LG474108047

Comments: This Laboratory Grown Diamond was created by Chemical Vapor Deposition (CVD) growth process and may include post-growth treatment. Type IIa



IGI

04/27/2021  
IGI Report No. LG474108047  
CUT CORNERED RECT. MODIFIED BRILLIANT  
8.23 x 6.59 x 4.52 mm  
Carat Weight: 2.02 CARATS  
Color Grade: I  
Clarity Grade: VS 2  
Depth: 68.6%  
Table: 64.5%  
Girdle: Slightly Thick  
Culet: Pointed  
Polish: EXCELLENT  
Symmetry: EXCELLENT  
Fluorescence: NONE  
Inscription(s): LABGROWN IGI LG474108047  
Comments: This Laboratory Grown Diamond was created by Chemical Vapor Deposition (CVD) growth process and may include post-growth treatment. Type IIa