



LG474107926

LABORATORY GROWN DIAMOND REPORT

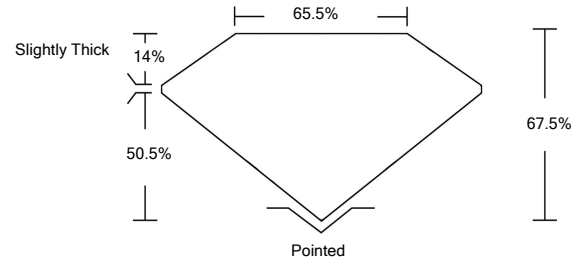
04/27/2021
IGI Report Number LG474107926
Shape and Cutting Style CUT CORNERED SQUARE MODIFIED BRILLIANT
Measurements 8.14 x 8.12 x 5.48 mm

GRADING RESULTS
Carat Weight 3.11 CARATS
Color Grade E
Clarity Grade VVS 2

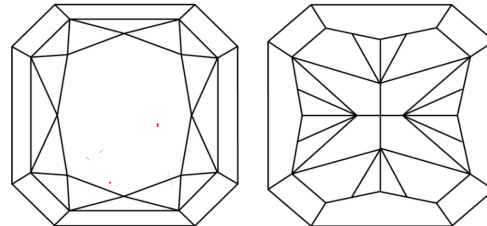
ADDITIONAL GRADING INFORMATION
Polish EXCELLENT
Symmetry EXCELLENT
Fluorescence NONE
Inscription(s) LABGROWN IGI LG474107926

Comments: This Laboratory Grown Diamond was created by Chemical Vapor Deposition (CVD) growth process and may include post-growth treatment. Type IIa

PROPORTIONS



CLARITY CHARACTERISTICS



KEY TO SYMBOLS

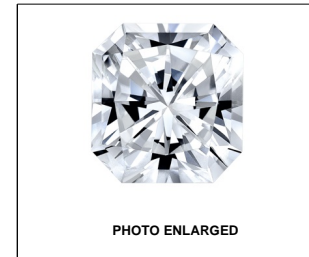
Red symbols indicate internal characteristics. Green symbols indicate external characteristics.

GRADING SCALES

Table with 5 columns for Color Grading Scale (CL, NC, FT, VLT, LT) and Clarity (10x) Grading Scale (FL, IF, VVS, VS, SI, I).

The laboratory grown diamond described in this Report (Report) has been graded, tested, analyzed, examined and/or inscribed by International Gemological Institute (IGI). A laboratory grown diamond is one that has essentially the same chemical, physical and optical properties as a mined diamond...

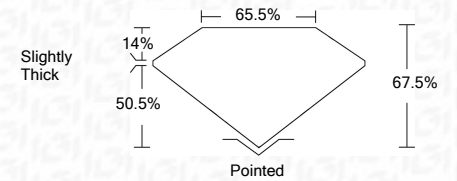
© INTERNATIONAL GEMOLOGICAL INSTITUTE, INC.



LABGROWN IGI LG474107926

LASERSCRIBE SM

04/27/2021
IGI Report Number LG474107926
Shape and Cutting Style CUT CORNERED SQUARE MODIFIED BRILLIANT
Measurements 8.14 x 8.12 x 5.48 mm
GRADING RESULTS
Carat Weight 3.11 CARATS
Color Grade E
Clarity Grade VVS 2



ADDITIONAL GRADING INFORMATION
Polish EXCELLENT
Symmetry EXCELLENT
Fluorescence NONE
Inscription(s) LABGROWN IGI LG474107926

Comments: This Laboratory Grown Diamond was created by Chemical Vapor Deposition (CVD) growth process and may include post-growth treatment. Type IIa



IGI

04/27/2021
IGI Report No. LG474107926
CUT CORNERED SQUARE MODIFIED BRILLIANT
8.14 x 8.12 x 5.48 mm
3.11 CARATS
E
VVS 2
67.5%
65.5%
Slightly Thick
Pointed
EXCELLENT
EXCELLENT
NONE
LABGROWN IGI LG474107926

This Laboratory Grown Diamond was created by Chemical Vapor Deposition (CVD) growth process and may include post-growth treatment. Type IIa

