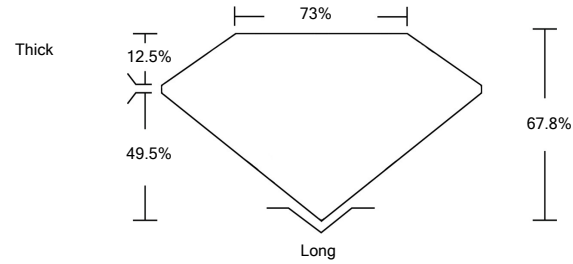




LG476157941

LABORATORY GROWN DIAMOND REPORT

PROPORTIONS

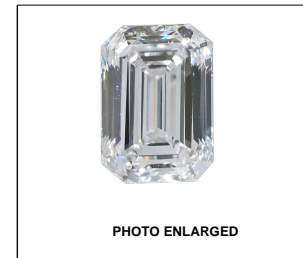


GRADING SCALES

Table with 5 columns for Color Grading Scale (CL, NC, FT, VLT, LT) and Clarity (10x) Grading Scale (FL, IF, VVS, VS, SI, I).

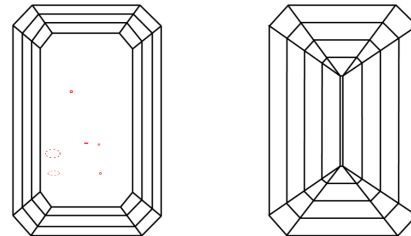
The laboratory grown diamond described in this Report (Report) has been graded, tested, analyzed, examined and/or inscribed by International Gemological Institute (IGI). A laboratory grown diamond is one that has essentially the same chemical, physical and optical properties as a mined diamond...

© INTERNATIONAL GEMOLOGICAL INSTITUTE, INC.



LASERSCRIBE<sup>SM</sup>

CLARITY CHARACTERISTICS



KEY TO SYMBOLS

Red symbols indicate internal characteristics. Green symbols indicate external characteristics.

05/20/2021 IGI Report Number LG476157941 Shape and Cutting Style EMERALD CUT Measurements 9.79 x 6.61 x 4.48 mm

GRADING RESULTS Carat Weight 3.01 CARATS Color Grade H Clarity Grade VS 2

ADDITIONAL GRADING INFORMATION Polish EXCELLENT Symmetry VERY GOOD Fluorescence NONE Inscription(s) LABGROWN IGI LG476157941

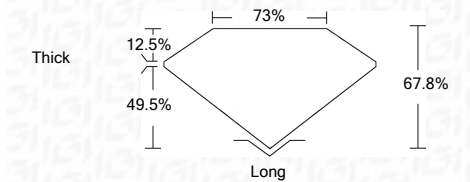
Comments: This Laboratory Grown Diamond was created by Chemical Vapor Deposition (CVD) growth process and may include post-growth treatment. Type IIa

05/20/2021 IGI Report Number LG476157941 Shape and Cutting Style EMERALD CUT Measurements 9.79 x 6.61 x 4.48 mm

GRADING RESULTS Carat Weight 3.01 CARATS Color Grade H Clarity Grade VS 2

ADDITIONAL GRADING INFORMATION Polish EXCELLENT Symmetry VERY GOOD Fluorescence NONE Inscription(s) LABGROWN IGI LG476157941

Comments: This Laboratory Grown Diamond was created by Chemical Vapor Deposition (CVD) growth process and may include post-growth treatment. Type IIa



IGI

05/20/2021 IGI Report No. LG476157941 EMERALD CUT 9.79 x 6.61 x 4.48 mm 3.01 CARATS H VS 2 67.8% 73% Thick Long EXCELLENT VERY GOOD NONE LABGROWN IGI LG476157941

This Laboratory Grown Diamond was created by Chemical Vapor Deposition (CVD) growth process and may include post-growth treatment. Type IIa