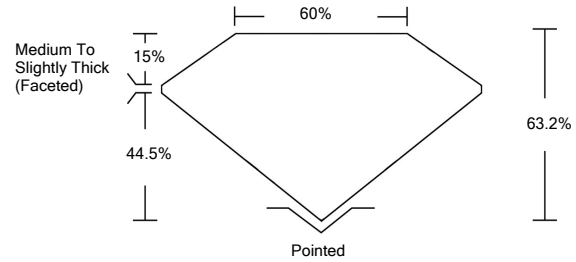




LG490194354

LABORATORY GROWN DIAMOND REPORT

PROPORTIONS

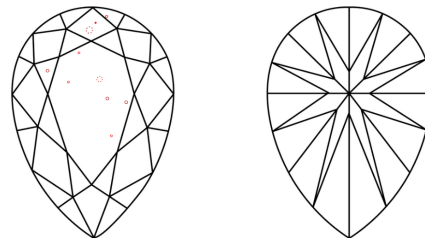


GRADING SCALES

Table with 5 columns for Color Grading Scale (CL, NC, FT, VLT, LT) and Clarity (10x) Grading Scale (FL, IF, VVS, VS, SI, I).

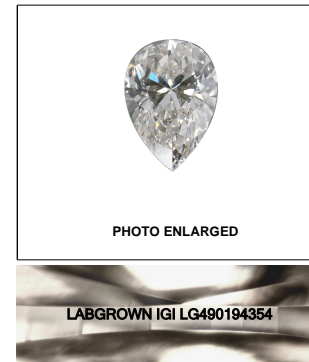
The laboratory grown diamond described in this Report (Report) has been graded, tested, analyzed, examined and/or inscribed by International Gemological Institute (IGI). A laboratory grown diamond is one that has essentially the same chemical, physical and optical properties as a mined diamond...

CLARITY CHARACTERISTICS



KEY TO SYMBOLS

Red symbols indicate internal characteristics. Green symbols indicate external characteristics.



LASERSCRIBE SM

08/27/2021

IGI Report Number LG490194354

Shape and Cutting Style PEAR BRILLIANT

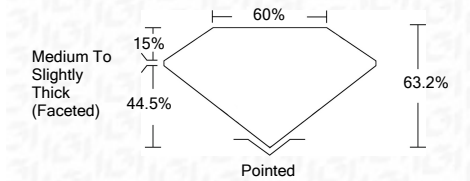
Measurements 12.59 x 8.05 x 5.09 mm

GRADING RESULTS

Carat Weight 3.05 CARATS

Color Grade H

Clarity Grade VS 2



ADDITIONAL GRADING INFORMATION

Polish EXCELLENT

Symmetry EXCELLENT

Fluorescence NONE

Inscription(s) LABGROWN IGI LG490194354

Comments: This Laboratory Grown Diamond was created by Chemical Vapor Deposition (CVD) growth process and may include post-growth treatment. Type IIa



IGI

08/27/2021 IGI Report No. LG490194354 PEAR BRILLIANT 12.59 x 8.05 x 5.09 mm 3.05 CARATS H VS 2 63.2% 60% Medium To Slightly Thick (Faceted) EXCELLENT EXCELLENT NONE LABGROWN IGI LG490194354

This Laboratory Grown Diamond was created by Chemical Vapor Deposition (CVD) growth process and may include post-growth treatment. Type IIa

