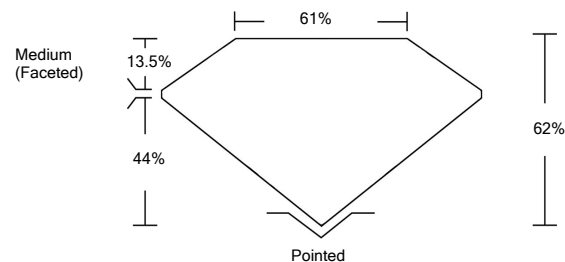




LG496199370

LABORATORY GROWN DIAMOND REPORT

PROPORTIONS



GRADING SCALES

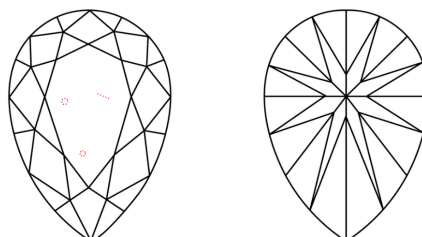
COLOR GRADING SCALE	CL	NC	FT	VL	LT	
	COLORLESS D-F	NEAR COLORLESS G-J	FAINT K-M	VERY LIGHT N-R	LIGHT S-Z	
CLARITY (10x) GRADING SCALE	FL	IF	VVS	VS	SI	I
	FLAWLESS INTERNALLY FLAWLESS	VERY VERY SLIGHTLY INCLUDED	VERY SLIGHTLY INCLUDED	SLIGHTLY INCLUDED	INCLUDED	

The laboratory grown diamond described in this Report (Report) has been graded, tested, analyzed, examined and/or inscribed by International Gemological Institute (IGI). A laboratory grown diamond is one that has essentially the same chemical, physical and optical properties as a mined diamond, with the exception of being grown by man (a manufactured product). IGI employs and utilizes those techniques and equipment currently available to IGI, including, without limitation, 10X magnification, corrected triplet loupe, binocular microscope, master color comparison stones, non-contact-optical measuring device, Diamond Sure™, Diamond View™, Spectrophotometer and such other instruments and/or processes as deemed appropriate by IGI. This Report includes advanced security features. A duly accredited gemologist or jeweler can advise you with respect to the importance of and interrelationship between cut, color, clarity and carat weight.

THIS REPORT IS NEITHER A GUARANTEE, VALUATION, NOR APPRAISAL OF THE GEMSTONE DESCRIBED HEREIN. PLEASE REVIEW THE LIMITATIONS AND RESTRICTIONS SET FORTH ONLINE. FOR ADDITIONAL INFORMATION, IMPORTANT LIMITATIONS AND DISCLAIMERS, PLEASE GO TO WWW.IGI.ORG OR CALL 1-888-BUY-IGIS.

© INTERNATIONAL GEMOLOGICAL INSTITUTE, INC.

CLARITY CHARACTERISTICS



KEY TO SYMBOLS

Red symbols indicate internal characteristics.
Green symbols indicate external characteristics.

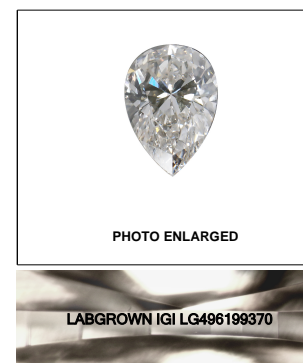


PHOTO ENLARGED

LASERSCRIBESM

LABGROWN IGI LG496199370

September 22, 2021

IGI Report Number

LG496199370

Description

**LABORATORY GROWN
DIAMOND**

Shape and Cutting Style

PEAR BRILLIANT

Measurements

9.32 X 5.97 X 3.70 MM

GRADING RESULTS

Carat Weight

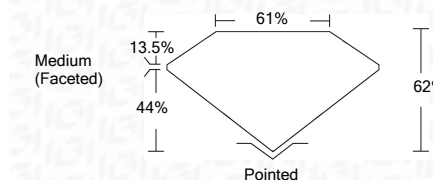
1.17 CARAT

Color Grade

F

Clarity Grade

VS 1



ADDITIONAL GRADING INFORMATION

Polish

EXCELLENT

Symmetry

EXCELLENT

Fluorescence

NONE

Inscription(s)

LABGROWN IGI LG496199370

Comments: This Laboratory Grown Diamond was created by Chemical Vapor Deposition (CVD) growth process and may include post-growth treatment.
Type IIa



IGI



© IGI 2020, International Gemological Institute

FD - 10 20

September 22, 2021	1.17 CARAT	F	VS 1	62%	61%	Medium (Faceted)	Pointed
IGI Report No. LG496199370	1.17 CARAT	F	VS 1	62%	61%	Medium (Faceted)	Pointed
PEAR BRILLIANT	1.17 CARAT	F	VS 1	62%	61%	Medium (Faceted)	Pointed
9.32 X 5.97 X 3.70 MM	1.17 CARAT	F	VS 1	62%	61%	Medium (Faceted)	Pointed
Carat Weight	1.17 CARAT	F	VS 1	62%	61%	Medium (Faceted)	Pointed
Color Grade	F						
Clarity Grade	VS 1						
Depth	62%						
Table	61%						
Grade	Medium (Faceted)						
Culet	Pointed						
Polish	EXCELLENT						
Symmetry	EXCELLENT						
Fluorescence	NONE						
Inscription(s)	LABGROWN IGI LG496199370						
Comments:	This Laboratory Grown Diamond was created by Chemical Vapor Deposition (CVD) growth process and may include post-growth treatment. Type IIa						