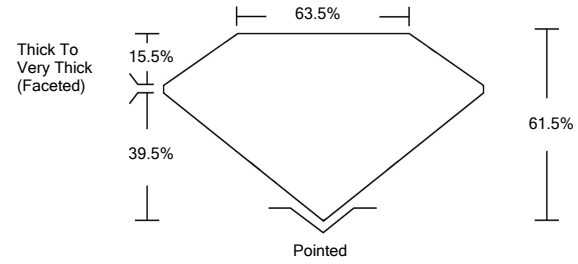




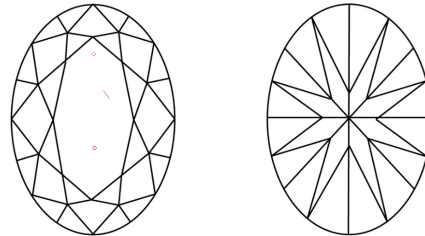
LG468185180

LABORATORY GROWN DIAMOND REPORT

PROPORTIONS



CLARITY CHARACTERISTICS



KEY TO SYMBOLS

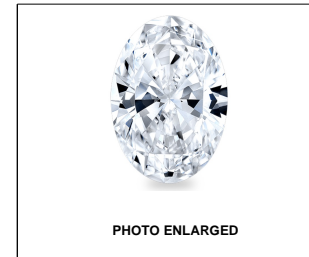
Red symbols indicate internal characteristics. Green symbols indicate external characteristics.

GRADING SCALES

Table with 5 columns for Color (CL, NC, FT, VLT, LT) and Clarity (FL, IF, VVS, VS, SI, I) grading scales.

The laboratory grown diamond described in this Report (Report) has been graded, tested, analyzed, examined and/or inscribed by International Gemological Institute (IGI). A laboratory grown diamond is one that has essentially the same chemical, physical and optical properties as a mined diamond...

© INTERNATIONAL GEMOLOGICAL INSTITUTE, INC.



LABGROWN IGI LG468185180

LASERSCRIBE<sup>SM</sup>

03/23/2021

IGI Report Number LG468185180

Shape and Cutting Style OVAL BRILLIANT

Measurements 11.69 x 7.79 x 4.79 mm

GRADING RESULTS

Carat Weight 3.01 CARATS

Color Grade G

Clarity Grade VS 2

ADDITIONAL GRADING INFORMATION

Polish EXCELLENT

Symmetry EXCELLENT

Fluorescence NONE

Inscription(s) LABGROWN IGI LG468185180

Comments: This Laboratory Grown Diamond was created by Chemical Vapor Deposition (CVD) growth process and may include post-growth treatment. Type IIa



IGI

03/23/2021 IGI Report No. LG468185180 OVAL BRILLIANT 11.69 x 7.79 x 4.79 mm 3.01 CARATS G VS 2 61.5% 63.5% Thick To Very Thick (Faceted) Pointed EXCELLENT EXCELLENT NONE LABGROWN IGI LG468185180

This Laboratory Grown Diamond was created by Chemical Vapor Deposition (CVD) growth process and may include post-growth treatment. Type IIa

