



LG480173673

LABORATORY GROWN DIAMOND REPORT

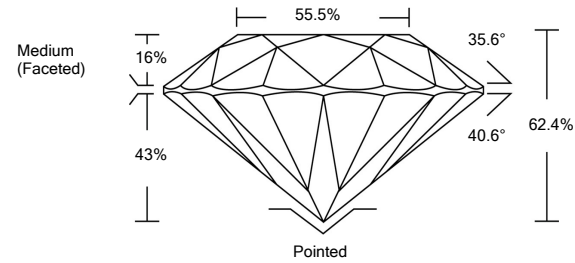
06/28/2021
IGI Report Number LG480173673
Shape and Cutting Style ROUND BRILLIANT
Measurements 9.35 - 9.40 x 5.86 mm

GRADING RESULTS
Carat Weight 3.17 CARATS
Color Grade D
Clarity Grade VVS 1
Cut Grade IDEAL

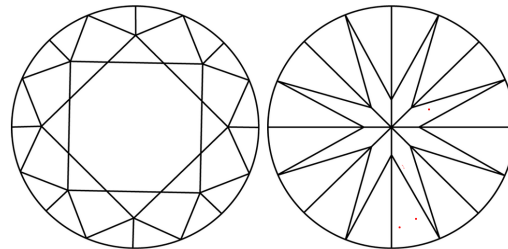
ADDITIONAL GRADING INFORMATION
Polish EXCELLENT
Symmetry EXCELLENT
Fluorescence NONE
Inscription(s) LABGROWN IGI LG480173673

Comments: HEARTS & ARROWS
As Grown - No indication of post-growth treatment.
This Laboratory Grown Diamond was created by High Pressure High Temperature (HPHT) growth process.
Type II

PROPORTIONS

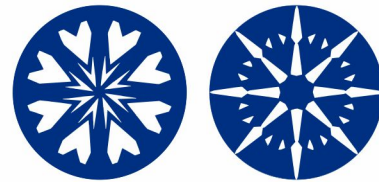


CLARITY CHARACTERISTICS



KEY TO SYMBOLS

Red symbols indicate internal characteristics.
Green symbols indicate external characteristics.

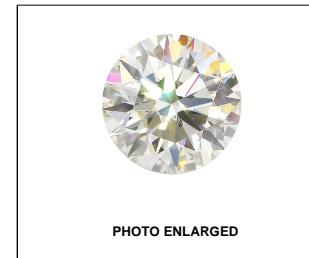


GRADING SCALES

Table with 5 columns for Color Grading Scale (CL to LT) and Clarity (10x) Grading Scale (FL to I).

The laboratory grown diamond described in this Report (Report) has been graded, tested, analyzed, examined and/or inscribed by International Gemological Institute (IGI). A laboratory grown diamond is one that has essentially the same chemical, physical and optical properties as a mined diamond...

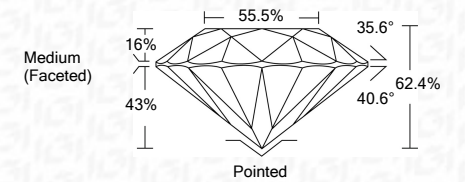
© INTERNATIONAL GEMOLOGICAL INSTITUTE, INC.



LABGROWN IGI LG480173673

LASERSCRIBE SM

06/28/2021
IGI Report Number LG480173673
Shape and Cutting Style ROUND BRILLIANT
Measurements 9.35 - 9.40 x 5.86 mm
GRADING RESULTS
Carat Weight 3.17 CARATS
Color Grade D
Clarity Grade VVS 1
Cut Grade IDEAL



ADDITIONAL GRADING INFORMATION
Polish EXCELLENT
Symmetry EXCELLENT
Fluorescence NONE
Inscription(s) LABGROWN IGI LG480173673

Comments: HEARTS & ARROWS
As Grown - No indication of post-growth treatment.
This Laboratory Grown Diamond was created by High Pressure High Temperature (HPHT) growth process.
Type II



IGI

06/28/2021
IGI Report No. LG480173673
ROUND BRILLIANT
9.35 - 9.40 x 5.86 mm
Carat Weight 3.17 CARATS
Color Grade D
Clarity Grade VVS 1
Cut Grade IDEAL
Depth 62.4%
Table 55.5%
Grade Medium (Faceted)
Culet Pointed
Polish EXCELLENT
Symmetry EXCELLENT
Fluorescence NONE
Inscription(s) LABGROWN IGI LG480173673
Comments: HEARTS & ARROWS
As Grown - No indication of post-growth treatment.
This Laboratory Grown Diamond was created by High Pressure High Temperature (HPHT) growth process.
Type II