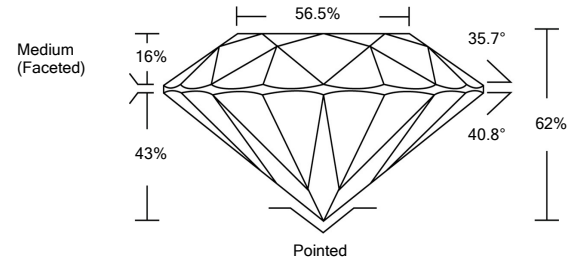




LG476168089

LABORATORY GROWN DIAMOND REPORT

PROPORTIONS



GRADING SCALES

Table with 5 columns for Color Grading Scale (CL to LT) and Clarity (10x) Grading Scale (FL to I).

The laboratory grown diamond described in this Report (Report) has been graded, tested, analyzed, examined and/or inscribed by International Gemological Institute (IGI). A laboratory grown diamond is one that has essentially the same chemical, physical and optical properties as a mined diamond...

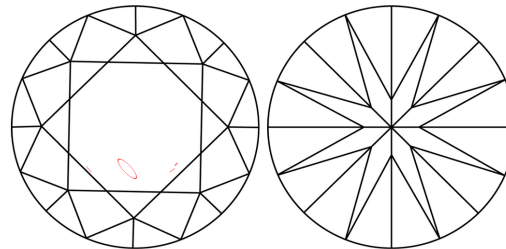
05/28/2021 IGI Report Number LG476168089 Shape and Cutting Style ROUND BRILLIANT Measurements 8.43 - 8.45 x 5.23 mm

GRADING RESULTS Carat Weight 2.28 CARATS Color Grade G Clarity Grade SI 1 Cut Grade IDEAL

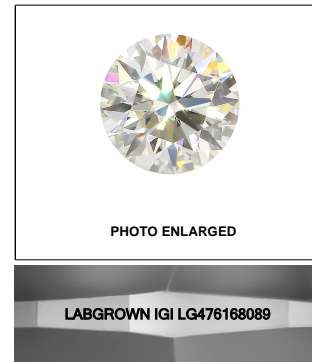
ADDITIONAL GRADING INFORMATION Polish EXCELLENT Symmetry EXCELLENT Fluorescence NONE Inscription(s) LABGROWN IGI LG476168089

Comments: As Grown - No indication of post-growth treatment. This Laboratory Grown Diamond was created by High Pressure High Temperature (HPHT) growth process. Type II Faint Blue

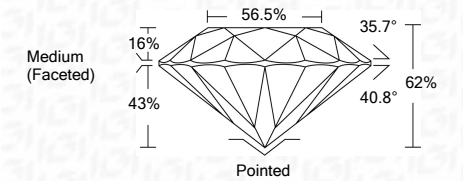
CLARITY CHARACTERISTICS



KEY TO SYMBOLS Red symbols indicate internal characteristics. Green symbols indicate external characteristics.



05/28/2021 IGI Report Number LG476168089 Shape and Cutting Style ROUND BRILLIANT Measurements 8.43 - 8.45 x 5.23 mm GRADING RESULTS Carat Weight 2.28 CARATS Color Grade G Clarity Grade SI 1 Cut Grade IDEAL



ADDITIONAL GRADING INFORMATION Polish EXCELLENT Symmetry EXCELLENT Fluorescence NONE Inscription(s) LABGROWN IGI LG476168089

Comments: As Grown - No indication of post-growth treatment. This Laboratory Grown Diamond was created by High Pressure High Temperature (HPHT) growth process. Type II Faint Blue



IGI

05/28/2021 IGI Report No. LG476168089 ROUND BRILLIANT 8.43 - 8.45 x 5.23 mm 2.28 CARATS G SI 1 IDEAL 62% 56.5% Medium (Faceted) Pointed EXCELLENT EXCELLENT NONE LABGROWN IGI LG476168089