



LG483102897

LABORATORY GROWN DIAMOND REPORT

07/08/2021
IGI Report Number LG483102897
Shape and Cutting Style ROUND BRILLIANT
Measurements 7.30 - 7.35 X 4.52 MM

GRADING RESULTS

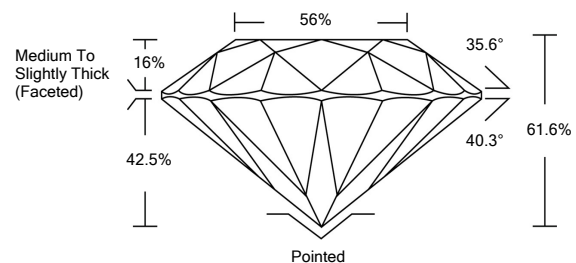
Carat Weight 1.50 CARAT
Color Grade F
Clarity Grade VVS 1
Cut Grade IDEAL

ADDITIONAL GRADING INFORMATION

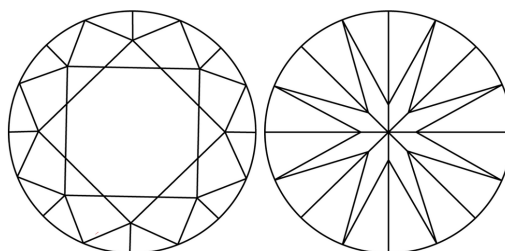
Polish EXCELLENT
Symmetry EXCELLENT
Fluorescence NONE
Inscription(s) LABGROWN IGI LG483102897

Comments: HEARTS & ARROWS
As Grown - No indication of post-growth treatment.
This Laboratory Grown Diamond was created by High Pressure High Temperature (HPHT) growth process.
Type II

PROPORTIONS

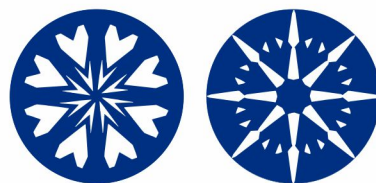


CLARITY CHARACTERISTICS



KEY TO SYMBOLS

Red symbols indicate internal characteristics.
Green symbols indicate external characteristics.

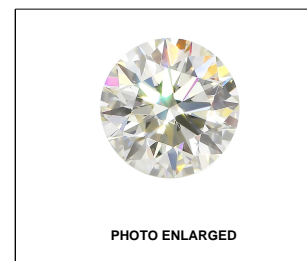


GRADING SCALES

Table with 5 columns for Color (CL, NC, FT, VLT, LT) and Clarity (FL, IF, VVS, VS, SI, I) grading scales.

The laboratory grown diamond described in this Report (Report) has been graded, tested, analyzed, examined and/or inscribed by International Gemological Institute (IGI). A laboratory grown diamond is one that has essentially the same chemical, physical and optical properties as a mined diamond...

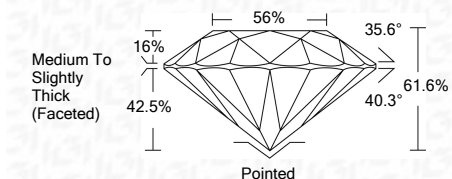
© INTERNATIONAL GEMOLOGICAL INSTITUTE, INC.



LABGROWN IGI LG483102897

LASERSCRIBE SM

07/08/2021
IGI Report Number LG483102897
Shape and Cutting Style ROUND BRILLIANT
Measurements 7.30 - 7.35 X 4.52 MM
Grading Results
Carat Weight 1.50 CARAT
Color Grade F
Clarity Grade VVS 1
Cut Grade IDEAL



ADDITIONAL GRADING INFORMATION

Polish EXCELLENT
Symmetry EXCELLENT
Fluorescence NONE
Inscription(s) LABGROWN IGI LG483102897

Comments: HEARTS & ARROWS
As Grown - No indication of post-growth treatment.
This Laboratory Grown Diamond was created by High Pressure High Temperature (HPHT) growth process.
Type II



IGI

07/08/2021
IGI Report No. LG483102897
ROUND BRILLIANT
7.30 - 7.35 X 4.52 MM
Carat Weight 1.50 CARAT
Color Grade F
Clarity Grade VVS 1
Cut Grade IDEAL
Depth 61.6%
Table 56%
Girdle Medium To Slightly Thick (Faceted)
Culet Pointed
Polish EXCELLENT
Symmetry EXCELLENT
Fluorescence NONE
Inscription(s) LABGROWN IGI LG483102897
Comments: HEARTS & ARROWS
As Grown - No indication of post-growth treatment.
This Laboratory Grown Diamond was created by High Pressure High Temperature (HPHT) growth process.
Type II

