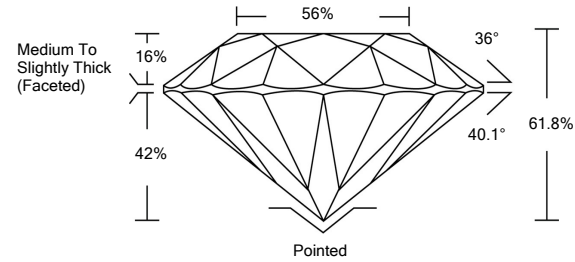




LG468101090

LABORATORY GROWN DIAMOND REPORT

PROPORTIONS



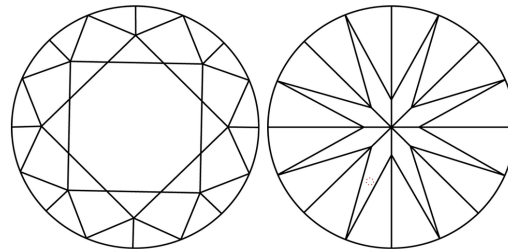
GRADING SCALES

Table with 5 columns for Color Grading Scale (CL, NC, FT, VLT, LT) and Clarity (10x) Grading Scale (FL, IF, VVS, VS, SI, I).

The laboratory grown diamond described in this Report (Report) has been graded, tested, analyzed, examined and/or inscribed by International Gemological Institute (IGI). A laboratory grown diamond is one that has essentially the same chemical, physical and optical properties as a mined diamond...

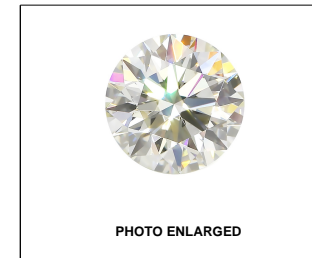
© INTERNATIONAL GEMOLOGICAL INSTITUTE, INC.

CLARITY CHARACTERISTICS



KEY TO SYMBOLS

Red symbols indicate internal characteristics. Green symbols indicate external characteristics.



LABGROWN IGI LG468101090

LASERSCRIBE<sup>SM</sup>

04/09/2021

IGI Report Number LG468101090

Shape and Cutting Style ROUND BRILLIANT

Measurements 6.49 - 6.53 x 4.02 mm

GRADING RESULTS

Carat Weight 1.06 CARAT

Color Grade E

Clarity Grade VVS 1

Cut Grade IDEAL

ADDITIONAL GRADING INFORMATION

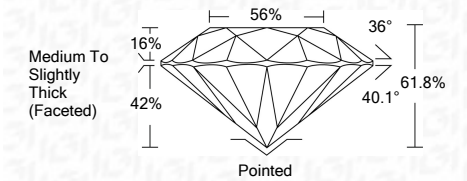
Polish EXCELLENT

Symmetry EXCELLENT

Fluorescence NONE

Inscription(s) LABGROWN IGI LG468101090

Comments: As Grown - No indication of post-growth treatment. This Laboratory Grown Diamond was created by High Pressure High Temperature (HPHT) growth process. Type II



IGI

04/09/2021 IGI Report No. LG468101090 ROUND BRILLIANT 6.49 - 6.53 x 4.02 mm 1.06 CARAT E VVS 1 IDEAL 61.8% 56% Medium To Slightly Thick (Faceted) Pointed EXCELLENT EXCELLENT NONE LABGROWN IGI LG468101090

