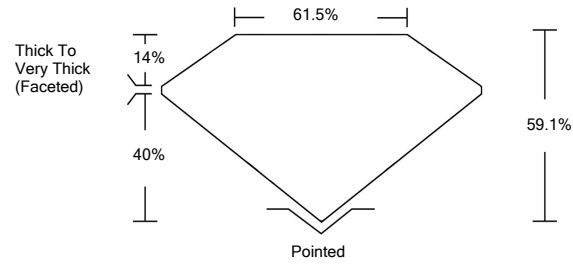




LG459189113

LABORATORY GROWN DIAMOND REPORT

PROPORTIONS



GRADING SCALES

Table with 5 columns for Color Grading Scale (CL to LT) and Clarity (10x) Grading Scale (FL to I).

The laboratory grown diamond described in this Report (Report) has been graded, tested, analyzed, examined and/or inscribed by International Gemological Institute (IGI). A laboratory grown diamond is one that has essentially the same chemical, physical and optical properties as a mined diamond...

© INTERNATIONAL GEMOLOGICAL INSTITUTE, INC.

01/19/2021

IGI Report Number LG459189113

Shape and Cutting Style OVAL BRILLIANT

Measurements 7.58 x 5.74 x 3.39 mm

GRADING RESULTS

Carat Weight 1.00 CARAT

Color Grade D

Clarity Grade VS 2

01/19/2021

IGI Report Number LG459189113

Shape and Cutting Style OVAL BRILLIANT

Measurements 7.58 x 5.74 x 3.39 mm

GRADING RESULTS

Carat Weight 1.00 CARAT

Color Grade D

Clarity Grade VS 2

ADDITIONAL GRADING INFORMATION

Polish EXCELLENT

Symmetry EXCELLENT

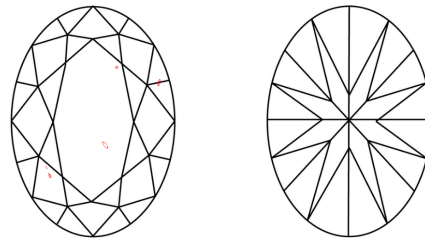
Fluorescence NONE

Inscription(s) LABGROWN IGI LG459189113

Comments: As Grown - No indication of post-growth treatment.

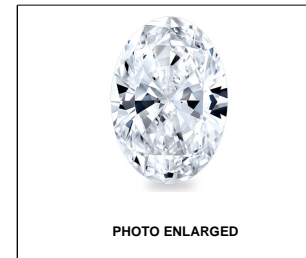
This Laboratory Grown Diamond was created by High Pressure High Temperature (HPHT) growth process. Type II

CLARITY CHARACTERISTICS



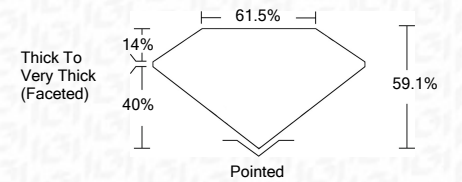
KEY TO SYMBOLS

Red symbols indicate internal characteristics. Green symbols indicate external characteristics.



LABGROWN IGI LG459189113

LASERSCRIBESM



ADDITIONAL GRADING INFORMATION

Polish EXCELLENT

Symmetry EXCELLENT

Fluorescence NONE

Inscription(s) LABGROWN IGI LG459189113

Comments: As Grown - No indication of post-growth treatment.

This Laboratory Grown Diamond was created by High Pressure High Temperature (HPHT) growth process. Type II



IGI

01/19/2021 IGI Report No. LG459189113 OVAL BRILLIANT 7.58 x 5.74 x 3.39 mm 1.00 CARAT D VS 2 68.1% 61.5% Thick To Very Thick (Faceted) Pointed EXCELLENT EXCELLENT NONE LABGROWN IGI LG459189113

As Grown - No indication of post-growth treatment. This Laboratory Grown Diamond was created by High Pressure High Temperature (HPHT) growth process. Type II