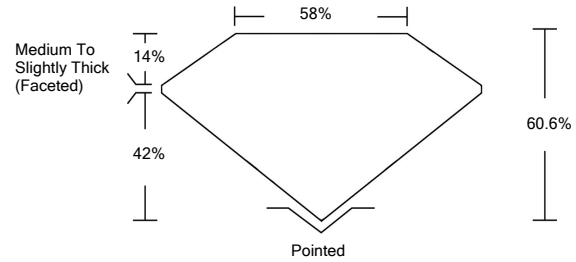




LG480153778

LABORATORY GROWN DIAMOND REPORT

PROPORTIONS



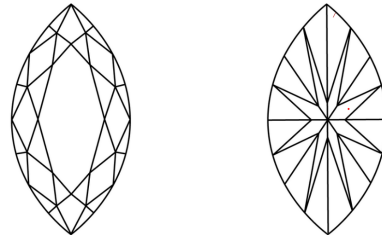
GRADING SCALES

Table with 5 columns for Color Grading Scale (CL to LT) and 5 columns for Clarity (10x) Grading Scale (FL to I).

The laboratory grown diamond described in this Report (Report) has been graded, tested, analyzed, examined and/or inscribed by International Gemological Institute (IGI). A laboratory grown diamond is one that has essentially the same chemical, physical and optical properties as a mined diamond...

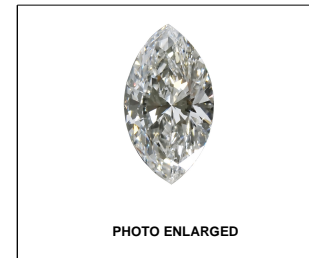
© INTERNATIONAL GEMOLOGICAL INSTITUTE, INC.

CLARITY CHARACTERISTICS



KEY TO SYMBOLS

Red symbols indicate internal characteristics. Green symbols indicate external characteristics.



LABGROWN IGI LG480153778

LASERSCRIBESM

06/21/2021

IGI Report Number LG480153778

Shape and Cutting Style MARQUISE BRILLIANT

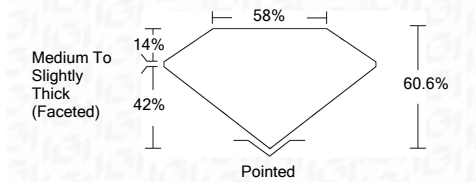
Measurements 10.87 x 5.73 x 3.47 mm

GRADING RESULTS

Carat Weight 1.23 CARAT

Color Grade G

Clarity Grade VVS 1



ADDITIONAL GRADING INFORMATION

Polish EXCELLENT

Symmetry VERY GOOD

Fluorescence NONE

Inscription(s) LABGROWN IGI LG480153778

Comments: As Grown - No indication of post-growth treatment.

This Laboratory Grown Diamond was created by High Pressure High Temperature (HPHT) growth process. Type II



IGI

06/21/2021 IGI Report No. LG480153778 MARQUISE BRILLIANT 10.87 x 5.73 x 3.47 mm 1.23 CARAT G VVS 1 60.6% 58% Medium To Slightly Thick (Faceted) Pointed EXCELLENT VERY GOOD NONE LABGROWN IGI LG480153778

As Grown - No indication of post-growth treatment. This Laboratory Grown Diamond was created by High Pressure High Temperature (HPHT) growth process. Type II

