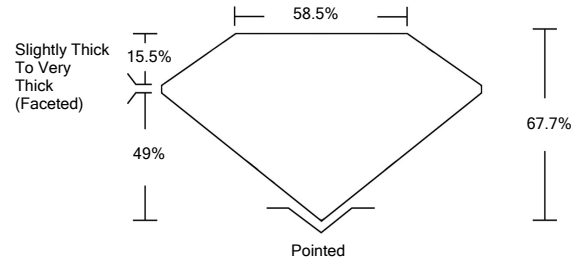




LG478107509

LABORATORY GROWN DIAMOND REPORT

PROPORTIONS

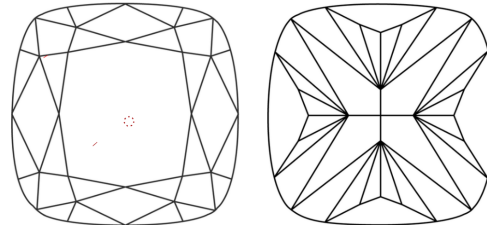


GRADING SCALES

Table with 5 columns for Color Grading Scale (CL, NC, FT, VLT, LT) and Clarity (10x) Grading Scale (FL, IF, VVS, VS, SI, I) with corresponding descriptions.

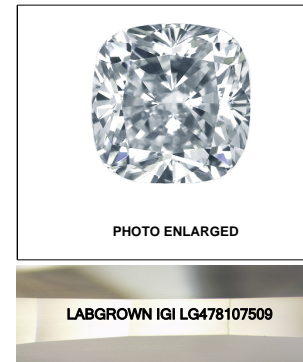
The laboratory grown diamond described in this Report (Report) has been graded, tested, analyzed, examined and/or inscribed by International Gemological Institute (IGI). A laboratory grown diamond is one that has essentially the same chemical, physical and optical properties as a mined diamond...

CLARITY CHARACTERISTICS



KEY TO SYMBOLS

Red symbols indicate internal characteristics. Green symbols indicate external characteristics.



06/09/2021

IGI Report Number LG478107509

Shape and Cutting Style SQUARE CUSHION MODIFIED BRILLIANT

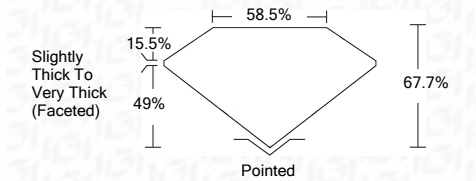
Measurements 7.45 x 7.24 x 4.90 mm

GRADING RESULTS

Carat Weight 2.01 CARATS

Color Grade G

Clarity Grade VVS 2



ADDITIONAL GRADING INFORMATION

Polish EXCELLENT

Symmetry EXCELLENT

Fluorescence NONE

Inscription(s) LABGROWN IGI LG478107509

Comments: As Grown - No indication of post-growth treatment.

This Laboratory Grown Diamond was created by High Pressure High Temperature (HPHT) growth process. Type II



06/09/2021 IGI Report No. LG478107509 SQUARE CUSHION MODIFIED BRILLIANT 7.45 x 7.24 x 4.90 mm 2.01 CARATS G VVS 2 67.7% 58.5% Slightly Thick To Very Thick (Faceted) Pointed EXCELLENT EXCELLENT NONE LABGROWN IGI LG478107509

As Grown - No indication of post-growth treatment. This Laboratory Grown Diamond was created by High Pressure High Temperature (HPHT) growth process. Type II

