



**ELECTRONIC COPY**

LG533284917

**LABORATORY GROWN DIAMOND REPORT**

June 9, 2022  
 IGI Report Number **LG533284917**  
 Description **LABORATORY GROWN  
DIAMOND**  
 Shape and Cutting Style **HEART BRILLIANT**  
 Measurements **8.18 X 9.42 X 5.58 MM**

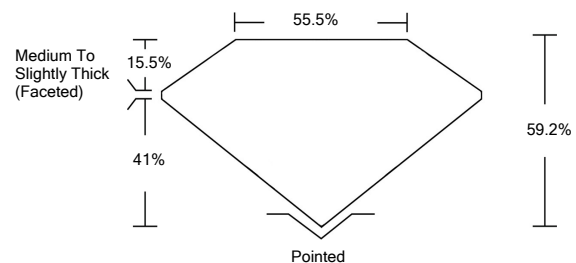
**GRADING RESULTS**

Carat Weight **2.51 CARATS**  
 Color Grade **D**  
 Clarity Grade **VS 1**

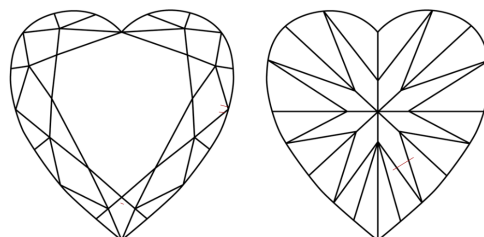
**ADDITIONAL GRADING INFORMATION**

Polish **EXCELLENT**  
 Symmetry **EXCELLENT**  
 Fluorescence **NONE**  
 Inscription(s) **LABGROWN IGI LG533284917**  
 Comments: As Grown - No indication of post-growth treatment. This Laboratory Grown Diamond was created by High Pressure High Temperature (HPHT) growth process. Type II

**PROPORTIONS**



**CLARITY CHARACTERISTICS**

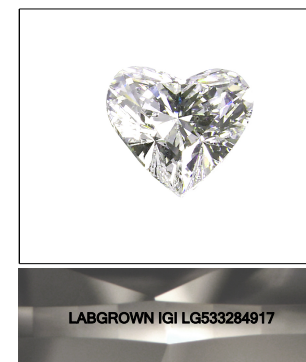


**KEY TO SYMBOLS**

Red symbols indicate internal characteristics.  
 Green symbols indicate external characteristics.

**GRADING SCALES**

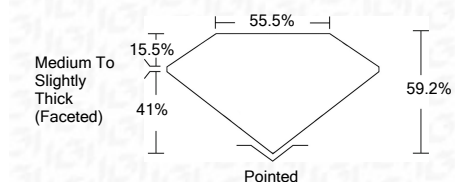
COLOR GRADING SCALE	CL	NC	FT	VLT	LT	
	COLORLESS D-F	NEAR COLORLESS G-J	FAINT K-M	VERY LIGHT N-R	LIGHT S-Z	
CLARITY (10x) GRADING SCALE	FL	IF	VVS	VS	SI	I
	FLAWLESS INTERNALLY FLAWLESS	VERY VERY SLIGHTLY INCLUDED	VERY SLIGHTLY INCLUDED	SLIGHTLY INCLUDED	INCLUDED	



LASERSCRIBE<sup>SM</sup>

Sample Image Used

June 9, 2022  
 IGI Report Number **LG533284917**  
 Description **LABORATORY GROWN  
DIAMOND**  
 Shape and Cutting Style **HEART BRILLIANT**  
 Measurements **8.18 X 9.42 X 5.58 MM**  
**GRADING RESULTS**  
 Carat Weight **2.51 CARATS**  
 Color Grade **D**  
 Clarity Grade **VS 1**



**ADDITIONAL GRADING INFORMATION**

Polish **EXCELLENT**  
 Symmetry **EXCELLENT**  
 Fluorescence **NONE**  
 Inscription(s) **LABGROWN IGI LG533284917**  
 Comments: As Grown - No indication of post-growth treatment. This Laboratory Grown Diamond was created by High Pressure High Temperature (HPHT) growth process. Type II



**IGI**



June 9, 2022  
 IGI Report No. LG533284917  
**HEART BRILLIANT**  
 8.18 X 9.42 X 5.58 MM  
 Carat Weight **2.51 CARATS**  
 Color Grade **D**  
 Clarity Grade **VS 1**  
 Depth **59.2%**  
 Table **15.5%**  
 Girdle **Medium To Slightly Thick (Faceted)**  
 Culet **Pointed**  
 Polish **EXCELLENT**  
 Symmetry **EXCELLENT**  
 Fluorescence **NONE**  
 Inscription(s) **LABGROWN IGI LG533284917**  
 Comments: As Grown - No indication of post-growth treatment. This Laboratory Grown Diamond was created by High Pressure High Temperature (HPHT) growth process. Type II