



**ELECTRONIC COPY**

**LABORATORY GROWN DIAMOND REPORT**

LG566306606  
Report verification at igi.org

**LABORATORY GROWN  
DIAMOND REPORT**

**LABORATORY GROWN DIAMOND REPORT**

**LABORATORY GROWN DIAMOND REPORT**

January 26, 2023  
IGI Report Number **LG566306606**  
Description **LABORATORY GROWN  
DIAMOND**  
Shape and Cutting Style **ROUND BRILLIANT**  
Measurements **6.54 - 6.57 X 3.96 MM**

**GRADING RESULTS**

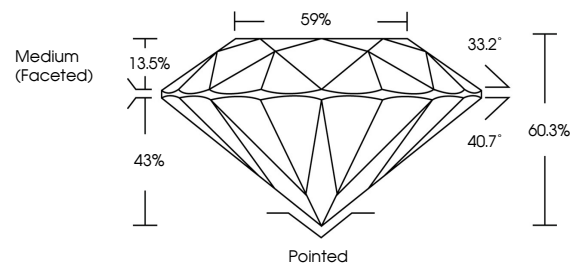
Carat Weight **1.05 CARAT**  
Color Grade **E**  
Clarity Grade **INTERNALLY FLAWLESS**  
Cut Grade **IDEAL**

**ADDITIONAL GRADING INFORMATION**

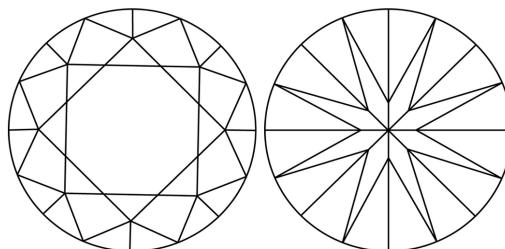
Polish **EXCELLENT**  
Symmetry **EXCELLENT**  
Fluorescence **NONE**  
Inscription(s) **LABGROWN (LGI) LG566306606**

Comments: As Grown - No indication of post-growth treatment.  
This Laboratory Grown Diamond was created by High Pressure High Temperature (HPHT) growth process.  
Type II

**PROPORTIONS**



**CLARITY CHARACTERISTICS**



**KEY TO SYMBOLS**

Red symbols indicate internal characteristics.  
Green symbols indicate external characteristics.

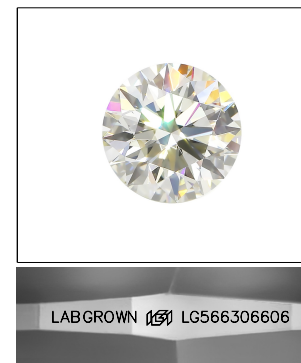
**GRADING SCALES**

**CLARITY**

IF	VVS <sup>1-2</sup>	VS <sup>1-2</sup>	SI <sup>1-2</sup>	I <sup>1-3</sup>
Internally Flawless	Very Very Slightly Included	Very Slightly Included	Slightly Included	Included

**COLOR**

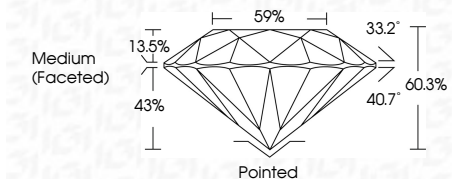
D	E	F	G	H	I	J	Faint	Very Light	Light
---	---	---	---	---	---	---	-------	------------	-------



**LASERSCRIBE<sup>SM</sup>**

Sample Image Used

January 26, 2023  
IGI Report Number **LG566306606**  
Description **LABORATORY GROWN  
DIAMOND**  
Shape and Cutting Style **ROUND BRILLIANT**  
Measurements **6.54 - 6.57 X 3.96 MM**  
**GRADING RESULTS**  
Carat Weight **1.05 CARAT**  
Color Grade **E**  
Clarity Grade **INTERNALLY FLAWLESS**  
Cut Grade **IDEAL**



**ADDITIONAL GRADING INFORMATION**

Polish **EXCELLENT**  
Symmetry **EXCELLENT**  
Fluorescence **NONE**  
Inscription(s) **LABGROWN (LGI) LG566306606**  
Comments: As Grown - No indication of post-growth treatment.  
This Laboratory Grown Diamond was created by High Pressure High Temperature (HPHT) growth process.  
Type II



**IGI**

January 26, 2023  
IGI Report No **LG566306606**  
**ROUND BRILLIANT**  
6.54 - 6.57 X 3.96 MM  
Carat Weight **1.05 CARAT**  
Color Grade **E**  
Clarity Grade **IF**  
Cut Grade **IDEAL**  
Depth **60.3%**  
Table **59%**  
Girdle **Medium (Faceted)**  
Culet **Pointed**  
Polish **EXCELLENT**  
Symmetry **EXCELLENT**  
Fluorescence **NONE**  
Inscriptions(s) **LABGROWN (LGI) LG566306606**  
Comments: **As Grown - No indication of post-growth treatment.**  
**This Laboratory Grown Diamond was created by High Pressure High Temperature (HPHT) growth process.**  
Type II

