



IGI GEMOLOGICAL REPORT

IGI LABORATORY GROWN DIAMOND GRADING REPORT

03/03/2021
IGI Report Number LG464114262
Shape and Cutting Style ROUND BRILLIANT
Measurements 7.62 - 7.68 X 4.77 MM

GRADING RESULTS

Carat Weight 1.75 CARAT
Color Grade D
Clarity Grade SI 2
Cut Grade EXCELLENT

ADDITIONAL GRADING INFORMATION

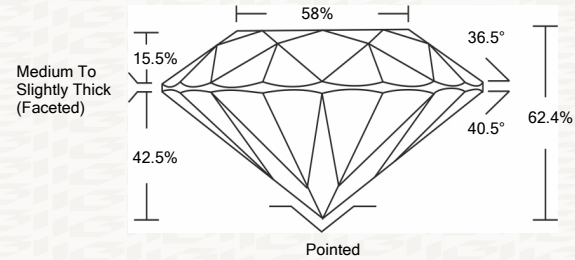
Polish EXCELLENT
Symmetry EXCELLENT
Fluorescence NONE
Inscription(s) LABGROWN IGI LG464114262

Comments: As Grown - No indication of post-growth treatment. This Laboratory Grown Diamond was created by High Pressure High Temperature (HPHT) growth process. Type II

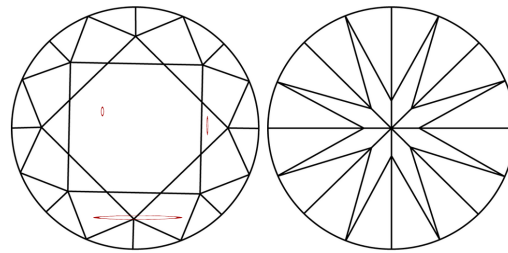


ADDITIONAL INFORMATION

PROPORTIONS



CLARITY CHARACTERISTICS



KEY TO SYMBOLS

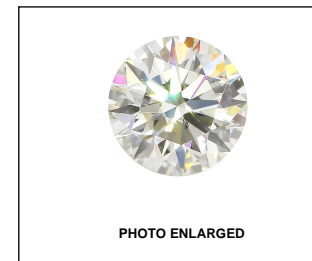
Red symbols indicate internal characteristics.
Green symbols indicate external characteristics.

This Report is subject to the terms and conditions
© IGI 2000, edition 2019 all rights reserved.

GRADING SCALES

Table with 2 columns: COLOR GRADING SCALE and CLARITY (10x) GRADING SCALE. Rows include CL, NC, FT, VLT, LT and FL, IF, VVS, VS, SI, I.

The laboratory grown diamond described in this Report (Report) has been graded, tested, analyzed, examined and/or inscribed by International Gemological Institute (IGI). A laboratory grown diamond is one that has essentially the same chemical, physical and optical properties as a mined diamond, with the exception of being grown by man (a manufactured product)...

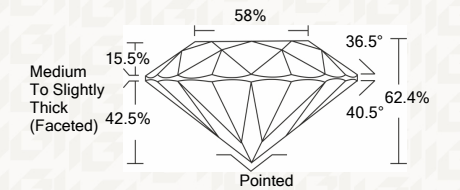


LABGROWN IGI LG464114262



IGI LABORATORY GROWN DIAMOND GRADING REPORT

03/03/2021
IGI Report Number LG464114262
Shape and Cutting Style ROUND BRILLIANT
Measurements 7.62 - 7.68 X 4.77 MM
GRADING RESULTS
Carat Weight 1.75 CARAT
Color Grade D
Clarity Grade SI 2
Cut Grade EXCELLENT



ADDITIONAL GRADING INFORMATION

Polish EXCELLENT
Symmetry EXCELLENT
Fluorescence NONE
Inscription(s) LABGROWN IGI LG464114262

Comments: As Grown - No indication of post-growth treatment. This Laboratory Grown Diamond was created by High Pressure High Temperature (HPHT) growth process. Type II



03/03/2021
IGI Report No. LG464114262
ROUND BRILLIANT
7.62 - 7.68 X 4.77 MM
Carat Weight 1.75 CARAT
Color Grade D
Clarity Grade SI 2
Cut Grade EXCELLENT
Depth 62.4%
Table 58%
Grade Medium To Slightly Thick (Faceted)
Polish EXCELLENT
Symmetry EXCELLENT
Fluorescence NONE
LABGROWN IGI LG464114262
Comments: As Grown - No indication of post-growth treatment. This Laboratory Grown Diamond was created by High Pressure High Temperature (HPHT) growth process. Type II

THE DOCUMENT WAS PRODUCED WITH THE FOLLOWING SECURITY MEASURES: SPECIAL DOCUMENT PAPER, INK SCREENS, WATERMARK BACKGROUND DESIGNS HOLOGRAM AND OTHER SECURITY FEATURES NOT LISTED AND DO EXCEED DOCUMENT SECURITY INDUSTRY GUIDELINES