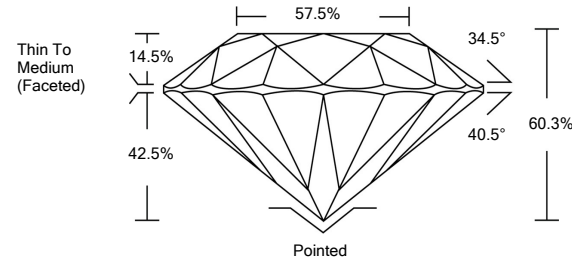




LG483195629

LABORATORY GROWN DIAMOND REPORT

PROPORTIONS



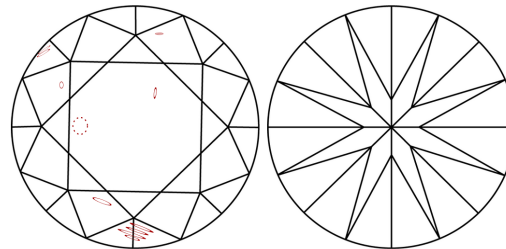
GRADING SCALES

Table with 5 columns for Color Grading Scale (CL to LT) and Clarity (10x) Grading Scale (FL to I).

The laboratory grown diamond described in this Report (Report) has been graded, tested, analyzed, examined and/or inscribed by International Gemological Institute (IGI). A laboratory grown diamond is one that has essentially the same chemical, physical and optical properties as a mined diamond...

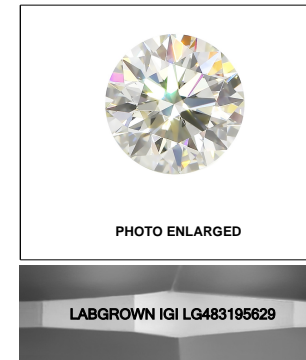
© INTERNATIONAL GEMOLOGICAL INSTITUTE, INC.

CLARITY CHARACTERISTICS

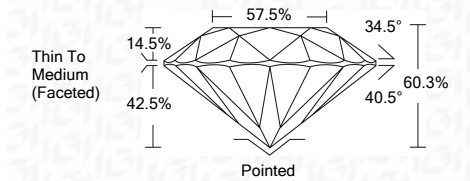


KEY TO SYMBOLS

Red symbols indicate internal characteristics. Green symbols indicate external characteristics.



06/30/2021 IGI Report Number LG483195629 Shape and Cutting Style ROUND BRILLIANT Measurements 7.74 - 7.78 x 4.68 mm GRADING RESULTS Carat Weight 1.71 CARAT Color Grade D Clarity Grade SI 2 Cut Grade IDEAL



ADDITIONAL GRADING INFORMATION

Polish EXCELLENT Symmetry EXCELLENT Fluorescence NONE Inscription(s) LABGROWN IGI LG483195629

Comments: As Grown - No indication of post-growth treatment. This Laboratory Grown Diamond was created by High Pressure High Temperature (HPHT) growth process. Type II

06/30/2021 IGI Report Number LG483195629 Shape and Cutting Style ROUND BRILLIANT Measurements 7.74 - 7.78 x 4.68 mm

GRADING RESULTS Carat Weight 1.71 CARAT Color Grade D Clarity Grade SI 2 Cut Grade IDEAL

ADDITIONAL GRADING INFORMATION Polish EXCELLENT Symmetry EXCELLENT Fluorescence NONE Inscription(s) LABGROWN IGI LG483195629

Comments: As Grown - No indication of post-growth treatment. This Laboratory Grown Diamond was created by High Pressure High Temperature (HPHT) growth process. Type II



IGI

06/30/2021 IGI Report No. LG483195629 ROUND BRILLIANT 7.74 - 7.78 x 4.68 mm 1.71 CARAT D SI 2 IDEAL 60.3% 57.5% Thin To Medium (Faceted) Pointed EXCELLENT EXCELLENT NONE LABGROWN IGI LG483195629 Comments: As Grown - No indication of post-growth treatment. This Laboratory Grown Diamond was created by High Pressure High Temperature (HPHT) growth process. Type II