



ELECTRONIC COPY

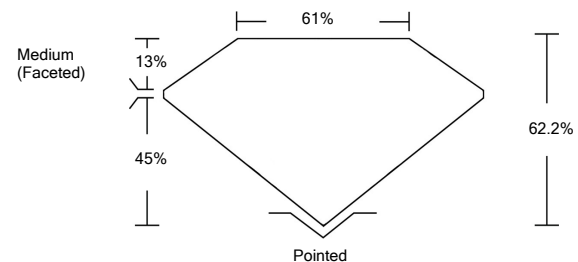
LABORATORY GROWN DIAMOND REPORT

April 5, 2022	
IGI Report Number	LG519246543
Description	LABORATORY GROWN DIAMOND
Shape and Cutting Style	OVAL BRILLIANT
Measurements	10.45 X 7.46 X 4.64 MM
GRADING RESULTS	
Carat Weight	2.25 CARATS
Color Grade	G
Clarity Grade	VVS 2
ADDITIONAL GRADING INFORMATION	
Polish	EXCELLENT
Symmetry	EXCELLENT
Fluorescence	NONE
Inscription(s)	LABGROWN IGI LG519246543

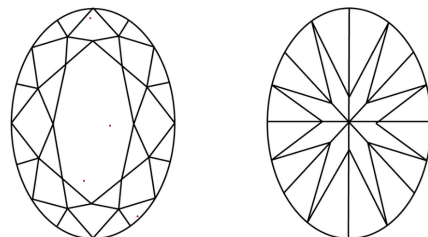
Comments: This Laboratory Grown Diamond was created by Chemical Vapor Deposition (CVD) growth process and may include post-growth treatment.
Type IIa

LG519246543

PROPORTIONS



CLARITY CHARACTERISTICS



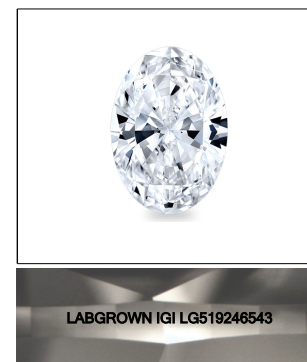
KEY TO SYMBOLS

Red symbols indicate internal characteristics.
Green symbols indicate external characteristics.

**LABORATORY GROWN
DIAMOND REPORT**

GRADING SCALES

COLOR GRADING SCALE	CL	NC	FT	VL	LT	
	COLORLESS D-F	NEAR COLORLESS G-J	FAINT K-M	VERY LIGHT N-R	LIGHT S-Z	
CLARITY (10x) GRADING SCALE	FL	IF	VVS	VS	SI	I
	FLAWLESS INTERNALLY FLAWLESS	VERY VERY SLIGHTLY INCLUDED	VERY SLIGHTLY INCLUDED	SLIGHTLY INCLUDED	INCLUDED	

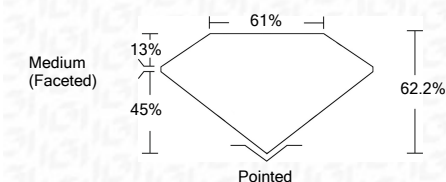


LASERSCRIBESM

Sample Image Used

LABORATORY GROWN DIAMOND REPORT

April 5, 2022	
IGI Report Number	LG519246543
Description	LABORATORY GROWN DIAMOND
Shape and Cutting Style	OVAL BRILLIANT
Measurements	10.45 X 7.46 X 4.64 MM
GRADING RESULTS	
Carat Weight	2.25 CARATS
Color Grade	G
Clarity Grade	VVS 2



ADDITIONAL GRADING INFORMATION

Polish	EXCELLENT
Symmetry	EXCELLENT
Fluorescence	NONE
Inscription(s)	LABGROWN IGI LG519246543

Comments: This Laboratory Grown Diamond was created by Chemical Vapor Deposition (CVD) growth process and may include post-growth treatment.
Type IIa



IGI

April 5, 2022	
IGI Report No. LG519246543	
OVAL BRILLIANT	
10.45 X 7.46 X 4.64 MM	
Carat Weight	2.25 CARATS
Color Grade	G
Clarity Grade	VVS 2
Depth	62.2%
Table	61%
Grade	Medium (Faceted)
Culet	Pointed
Polish	EXCELLENT
Symmetry	EXCELLENT
Fluorescence	NONE
Inscription(s)	LABGROWN IGI LG519246543
Comments:	

This Laboratory Grown Diamond was created by Chemical Vapor Deposition (CVD) growth process and may include post-growth treatment.
Type IIa

