

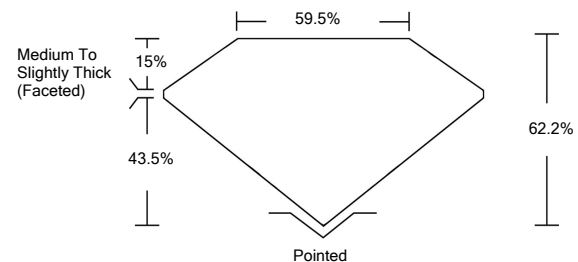


**ELECTRONIC COPY**

**LABORATORY GROWN DIAMOND REPORT**

LG532273415

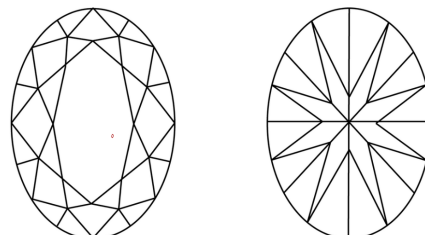
**PROPORTIONS**



**GRADING SCALES**

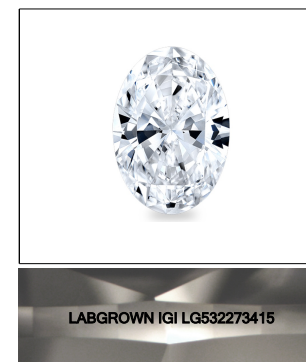
COLOR GRADING SCALE	CL	NC	FT	VL	LT	
	COLORLESS D-F	NEAR COLORLESS G-J	FAINT K-M	VERY LIGHT N-R	LIGHT S-Z	
CLARITY (10x) GRADING SCALE	FL	IF	VVS	VS	SI	I
	FLAWLESS INTERNALLY FLAWLESS	VERY VERY SLIGHTLY INCLUDED	VERY SLIGHTLY INCLUDED	SLIGHTLY INCLUDED	INCLUDED	

**CLARITY CHARACTERISTICS**



**KEY TO SYMBOLS**

Red symbols indicate internal characteristics.  
Green symbols indicate external characteristics.



**LASERSCRIBE<sup>SM</sup>**  
Sample Image Used

June 6, 2022

IGI Report Number **LG532273415**

Description **LABORATORY GROWN DIAMOND**

Shape and Cutting Style **OVAL BRILLIANT**

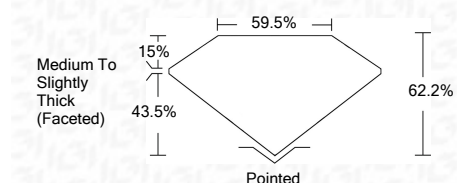
Measurements **10.12 X 7.20 X 4.48 MM**

**GRADING RESULTS**

Carat Weight **2.02 CARATS**

Color Grade **F**

Clarity Grade **VS 1**



**ADDITIONAL GRADING INFORMATION**

Polish **EXCELLENT**

Symmetry **EXCELLENT**

Fluorescence **NONE**

Inscription(s) **LABGROWN IGI LG532273415**

Comments: This Laboratory Grown Diamond was created by Chemical Vapor Deposition (CVD) growth process and may include post-growth treatment.  
Type IIa

June 6, 2022

IGI Report Number **LG532273415**

Description **LABORATORY GROWN DIAMOND**

Shape and Cutting Style **OVAL BRILLIANT**

Measurements **10.12 X 7.20 X 4.48 MM**

**GRADING RESULTS**

Carat Weight **2.02 CARATS**

Color Grade **F**

Clarity Grade **VS 1**

**ADDITIONAL GRADING INFORMATION**

Polish **EXCELLENT**

Symmetry **EXCELLENT**

Fluorescence **NONE**

Inscription(s) **LABGROWN IGI LG532273415**

Comments: This Laboratory Grown Diamond was created by Chemical Vapor Deposition (CVD) growth process and may include post-growth treatment.  
Type IIa



**IGI**

June 6, 2022	IGI Report No. LG532273415	2.02 CARATS	F
	OVAL BRILLIANT		
	10.12 X 7.20 X 4.48 MM		
	Carat Weight		
	Color Grade		
	Clarity Grade		
	Depth		
	Table		
	Girdle		
	Culet		
	Polish		
	Symmetry		
	Fluorescence		
	Inscription(s)		
	Comments:		

This Laboratory Grown Diamond was created by Chemical Vapor Deposition (CVD) growth process and may include post-growth treatment.  
Type IIa