



ELECTRONIC COPY

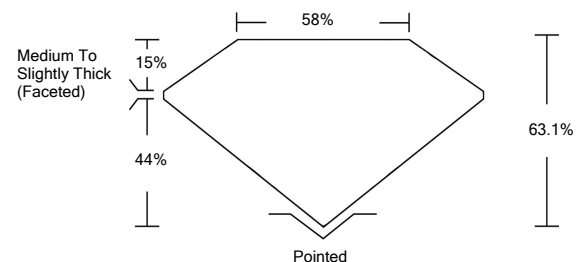
LG532264321

LABORATORY GROWN DIAMOND REPORT

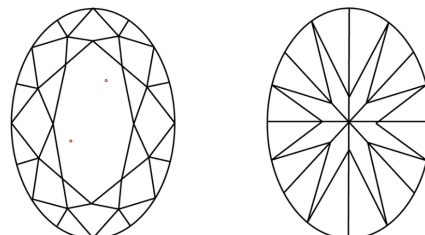
GRADING SCALES

| | | | | | | |
|-----------------------------|------------------------------|-----------------------------|------------------------|-------------------|-----------|---|
| COLOR GRADING SCALE | CL | NC | FT | VL | LT | |
| | COLORLESS D-F | NEAR COLORLESS G-J | FAINT K-M | VERY LIGHT N-R | LIGHT S-Z | |
| CLARITY (10x) GRADING SCALE | FL | IF | VVS | VS | SI | I |
| | FLAWLESS INTERNALLY FLAWLESS | VERY VERY SLIGHTLY INCLUDED | VERY SLIGHTLY INCLUDED | SLIGHTLY INCLUDED | INCLUDED | |

PROPORTIONS

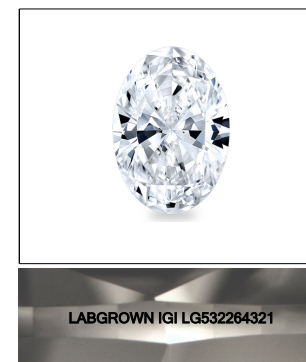


CLARITY CHARACTERISTICS



KEY TO SYMBOLS

Red symbols indicate internal characteristics.
Green symbols indicate external characteristics.



LASERSCRIBESM
Sample Image Used

June 4, 2022

IGI Report Number **LG532264321**

Description **LABORATORY GROWN DIAMOND**

Shape and Cutting Style **OVAL BRILLIANT**

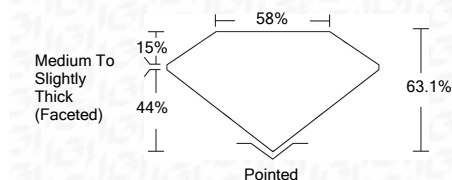
Measurements **10.22 X 7.29 X 4.60 MM**

GRADING RESULTS

Carat Weight **2.14 CARATS**

Color Grade **G**

Clarity Grade **VS 1**



ADDITIONAL GRADING INFORMATION

Polish **EXCELLENT**

Symmetry **EXCELLENT**

Fluorescence **NONE**

Inscription(s) **LABGROWN IGI LG532264321**

Comments: This Laboratory Grown Diamond was created by Chemical Vapor Deposition (CVD) growth process and may include post-growth treatment.
Type IIa

June 4, 2022

IGI Report Number **LG532264321**

Description **LABORATORY GROWN DIAMOND**

Shape and Cutting Style **OVAL BRILLIANT**

Measurements **10.22 X 7.29 X 4.60 MM**

GRADING RESULTS

Carat Weight **2.14 CARATS**

Color Grade **G**

Clarity Grade **VS 1**

ADDITIONAL GRADING INFORMATION

Polish **EXCELLENT**

Symmetry **EXCELLENT**

Fluorescence **NONE**

Inscription(s) **LABGROWN IGI LG532264321**

Comments: This Laboratory Grown Diamond was created by Chemical Vapor Deposition (CVD) growth process and may include post-growth treatment.
Type IIa



| | | |
|----------------------------|--|--------------------------|
| IGI Report No. LG532264321 | 2.14 CARATS | G |
| OVAL BRILLIANT | 63.1% | VS 1 |
| 10.22 X 7.29 X 4.60 MM | 58% | Pointed |
| Carat Weight | Medium To Slightly Thick (Faceted) | EXCELLENT |
| Color Grade | EXCELLENT | EXCELLENT |
| Clarity Grade | NONE | LABGROWN IGI LG532264321 |
| Depth | EXCELLENT | |
| Table | EXCELLENT | |
| Girdle | EXCELLENT | |
| Culet | NONE | |
| Polish | EXCELLENT | |
| Symmetry | EXCELLENT | |
| Fluorescence | NONE | |
| Inscription(s) | LABGROWN IGI LG532264321 | |
| Comments: | This Laboratory Grown Diamond was created by Chemical Vapor Deposition (CVD) growth process and may include post-growth treatment. Type IIa | |