

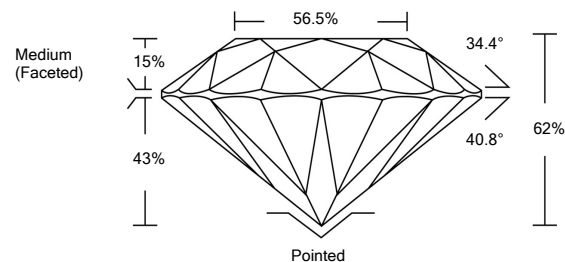


ELECTRONIC COPY

LABORATORY GROWN DIAMOND REPORT

LG529282064

PROPORTIONS



GRADING SCALES

Table with 2 rows and 5 columns showing color grading scales (CL, NC, FT, VLT, LT) and clarity grading scales (FL, IF, VVS, VS, SI, I).

May 23, 2022
IGI Report Number: LG529282064
Description: LABORATORY GROWN DIAMOND
Shape and Cutting Style: ROUND BRILLIANT
Measurements: 8.49 - 8.51 X 5.27 MM

GRADING RESULTS

Carat Weight: 2.34 CARATS
Color Grade: F
Clarity Grade: VS 1
Cut Grade: IDEAL

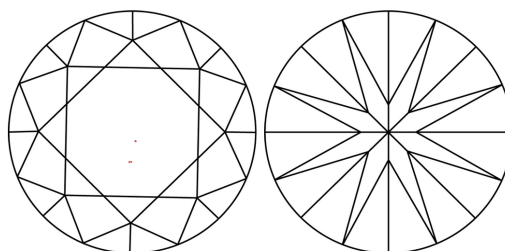
ADDITIONAL GRADING INFORMATION

Polish: EXCELLENT
Symmetry: EXCELLENT
Fluorescence: NONE

Inscription(s): LABGROWN IGI LG529282064

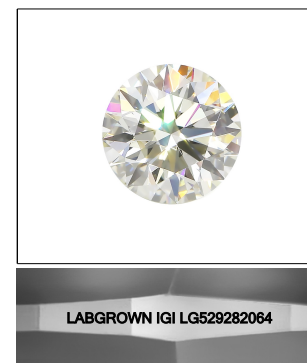
Comments: This Laboratory Grown Diamond was created by Chemical Vapor Deposition (CVD) growth process and may include post-growth treatment. Type IIa

CLARITY CHARACTERISTICS



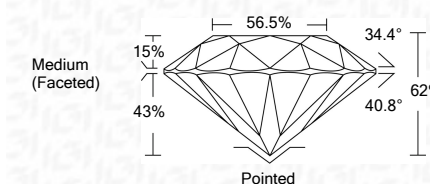
KEY TO SYMBOLS

Red symbols indicate internal characteristics. Green symbols indicate external characteristics.



LASERSCRIBE SM Sample Image Used

May 23, 2022
IGI Report Number: LG529282064
Description: LABORATORY GROWN DIAMOND
Shape and Cutting Style: ROUND BRILLIANT
Measurements: 8.49 - 8.51 X 5.27 MM
GRADING RESULTS
Carat Weight: 2.34 CARATS
Color Grade: F
Clarity Grade: VS 1
Cut Grade: IDEAL



ADDITIONAL GRADING INFORMATION

Polish: EXCELLENT
Symmetry: EXCELLENT
Fluorescence: NONE

Inscription(s): LABGROWN IGI LG529282064

Comments: This Laboratory Grown Diamond was created by Chemical Vapor Deposition (CVD) growth process and may include post-growth treatment. Type IIa



IGI



Summary table of diamond specifications: IGI Report No. LG529282064, ROUND BRILLIANT, 8.49 - 8.51 X 5.27 MM, 2.34 CARATS, F, VS 1, IDEAL, 62%, 56.5%, Medium (Faceted), Pointed, EXCELLENT, EXCELLENT, NONE, LABGROWN IGI LG529282064.

Comments: This Laboratory Grown Diamond was created by Chemical Vapor Deposition (CVD) growth process and may include post-growth treatment. Type IIa