



**ELECTRONIC COPY**

**LABORATORY GROWN DIAMOND REPORT**

June 6, 2022  
 IGI Report Number **LG532273522**  
 Description **LABORATORY GROWN  
DIAMOND**  
 Shape and Cutting Style **ROUND BRILLIANT**  
 Measurements **7.60 - 7.65 X 4.73 MM**

**GRADING RESULTS**

Carat Weight **1.72 CARAT**  
 Color Grade **G**  
 Clarity Grade **VS 2**  
 Cut Grade **IDEAL**

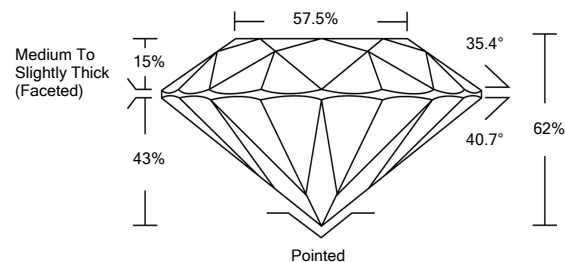
**ADDITIONAL GRADING INFORMATION**

Polish **EXCELLENT**  
 Symmetry **EXCELLENT**  
 Fluorescence **NONE**  
 Inscription(s) **LABGROWN IGI LG532273522**

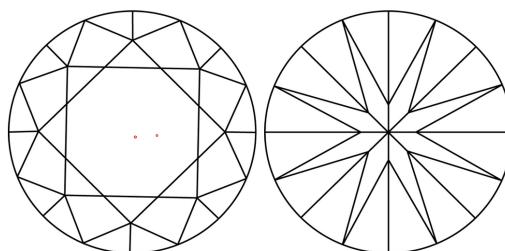
Comments: This Laboratory Grown Diamond was created by Chemical Vapor Deposition (CVD) growth process and may include post-growth treatment.  
 Type IIa

LG532273522

**PROPORTIONS**



**CLARITY CHARACTERISTICS**

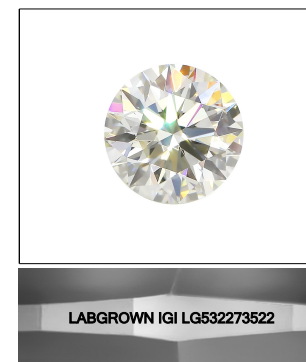


**KEY TO SYMBOLS**

Red symbols indicate internal characteristics.  
 Green symbols indicate external characteristics.

**GRADING SCALES**

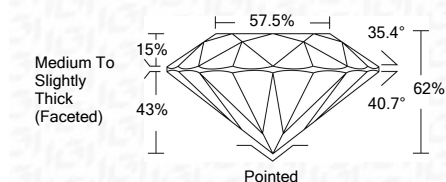
| COLOR GRADING SCALE         | CL                           | NC                          | FT                     | VL                | LT        |   |
|-----------------------------|------------------------------|-----------------------------|------------------------|-------------------|-----------|---|
|                             | COLORLESS D-F                | NEAR COLORLESS G-J          | FAINT K-M              | VERY LIGHT N-R    | LIGHT S-Z |   |
| CLARITY (10x) GRADING SCALE | FL                           | IF                          | VVS                    | VS                | SI        | I |
|                             | FLAWLESS INTERNALLY FLAWLESS | VERY VERY SLIGHTLY INCLUDED | VERY SLIGHTLY INCLUDED | SLIGHTLY INCLUDED | INCLUDED  |   |



LASERSCRIBE<sup>SM</sup>

Sample Image Used

June 6, 2022  
 IGI Report Number **LG532273522**  
 Description **LABORATORY GROWN  
DIAMOND**  
 Shape and Cutting Style **ROUND BRILLIANT**  
 Measurements **7.60 - 7.65 X 4.73 MM**  
**GRADING RESULTS**  
 Carat Weight **1.72 CARAT**  
 Color Grade **G**  
 Clarity Grade **VS 2**  
 Cut Grade **IDEAL**



**ADDITIONAL GRADING INFORMATION**

Polish **EXCELLENT**  
 Symmetry **EXCELLENT**  
 Fluorescence **NONE**  
 Inscription(s) **LABGROWN IGI LG532273522**

Comments: This Laboratory Grown Diamond was created by Chemical Vapor Deposition (CVD) growth process and may include post-growth treatment.  
 Type IIa



**IGI**



|              |                            |   |   |      |       |     |       |                                    |         |           |           |      |                          |
|--------------|----------------------------|---|---|------|-------|-----|-------|------------------------------------|---------|-----------|-----------|------|--------------------------|
| June 6, 2022 | IGI Report No. LG532273522 | 1.72 CARAT  | G | VS 2 | IDEAL | 62% | 57.5% | Medium To Slightly Thick (Faceted) | Pointed | EXCELLENT | EXCELLENT | NONE | LABGROWN IGI LG532273522 |
|              | ROUND BRILLIANT            | 7.60 - 7.65 X 4.73 MM   |   |      |       |     |       |                                    |         |           |           |      |                          |
|              | Carat Weight               |   |   |      |       |     |       |                                    |         |           |           |      |                          |
|              | Color Grade                |   |   |      |       |     |       |                                    |         |           |           |      |                          |
|              | Clarity Grade              |   |   |      |       |     |       |                                    |         |           |           |      |                          |
|              | Cut Grade                  |   |   |      |       |     |       |                                    |         |           |           |      |                          |
|              | Depth                      |   |   |      |       |     |       |                                    |         |           |           |      |                          |
|              | Table                      |   |   |      |       |     |       |                                    |         |           |           |      |                          |
|              | Girdle                     |   |   |      |       |     |       |                                    |         |           |           |      |                          |
|              | Culet                      |   |   |      |       |     |       |                                    |         |           |           |      |                          |
|              | Polish                     |   |   |      |       |     |       |                                    |         |           |           |      |                          |
|              | Symmetry                   |   |   |      |       |     |       |                                    |         |           |           |      |                          |
|              | Fluorescence               |   |   |      |       |     |       |                                    |         |           |           |      |                          |
|              | Inscription(s)             |   |   |      |       |     |       |                                    |         |           |           |      |                          |
|              | Comments:                  | This Laboratory Grown Diamond was created by Chemical Vapor Deposition (CVD) growth process and may include post-growth treatment. Type IIa |   |      |       |     |       |                                    |         |           |           |      |                          |