



**ELECTRONIC COPY**

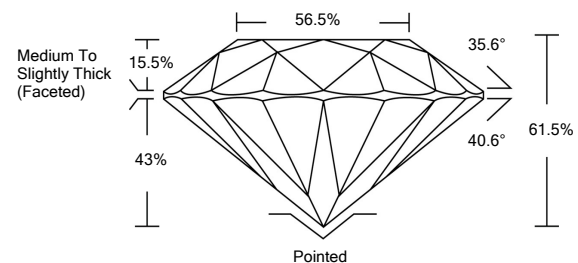
**LABORATORY GROWN DIAMOND REPORT**

February 11, 2022	
IGI Report Number	<b>LG515217429</b>
Description	<b>LABORATORY GROWN DIAMOND</b>
Shape and Cutting Style	<b>ROUND BRILLIANT</b>
Measurements	<b>7.62 - 7.68 X 4.70 MM</b>
<b>GRADING RESULTS</b>	
Carat Weight	<b>1.69 CARAT</b>
Color Grade	<b>D</b>
Clarity Grade	<b>SI 2</b>
Cut Grade	<b>IDEAL</b>
<b>ADDITIONAL GRADING INFORMATION</b>	
Polish	<b>EXCELLENT</b>
Symmetry	<b>EXCELLENT</b>
Fluorescence	<b>NONE</b>
Inscription(s)	<b>LABGROWN IGI LG515217429</b>

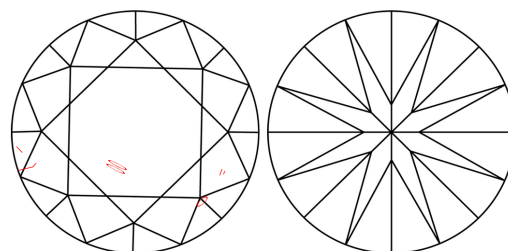
Comments: As Grown - No indication of post-growth treatment.  
This Laboratory Grown Diamond was created by High Pressure High Temperature (HPHT) growth process.  
Type II

LG515217429

**PROPORTIONS**



**CLARITY CHARACTERISTICS**

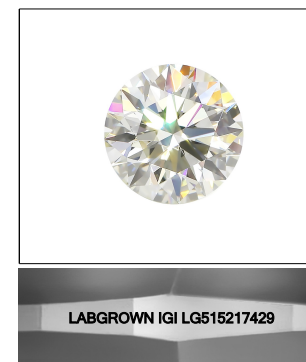


**KEY TO SYMBOLS**

Red symbols indicate internal characteristics.  
Green symbols indicate external characteristics.

**GRADING SCALES**

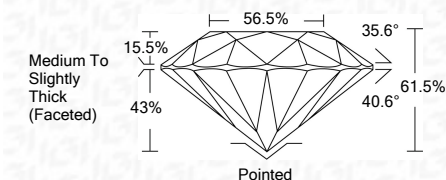
COLOR GRADING SCALE	CL	NC	FT	VLT	LT	
	COLORLESS D-F	NEAR COLORLESS G-J	FAINT K-M	VERY LIGHT N-R	LIGHT S-Z	
CLARITY (10x) GRADING SCALE	FL	IF	VVS	VS	SI	I
	FLAWLESS INTERNALLY FLAWLESS	VERY VERY SLIGHTLY INCLUDED	VERY SLIGHTLY INCLUDED	SLIGHTLY INCLUDED	INCLUDED	



**LASERSCRIBE<sup>SM</sup>**

Sample Image Used

February 11, 2022	
IGI Report Number	<b>LG515217429</b>
Description	<b>LABORATORY GROWN DIAMOND</b>
Shape and Cutting Style	<b>ROUND BRILLIANT</b>
Measurements	<b>7.62 - 7.68 X 4.70 MM</b>
<b>GRADING RESULTS</b>	
Carat Weight	<b>1.69 CARAT</b>
Color Grade	<b>D</b>
Clarity Grade	<b>SI 2</b>
Cut Grade	<b>IDEAL</b>



<b>ADDITIONAL GRADING INFORMATION</b>	
Polish	<b>EXCELLENT</b>
Symmetry	<b>EXCELLENT</b>
Fluorescence	<b>NONE</b>
Inscription(s)	<b>LABGROWN IGI LG515217429</b>

Comments: As Grown - No indication of post-growth treatment.  
This Laboratory Grown Diamond was created by High Pressure High Temperature (HPHT) growth process.  
Type II



February 11, 2022	
IGI Report No. LG515217429	
<b>ROUND BRILLIANT</b>	
<b>7.62 - 7.68 X 4.70 MM</b>	
Carat Weight	<b>1.69 CARAT</b>
Color Grade	<b>D</b>
Clarity Grade	<b>SI 2</b>
Cut Grade	<b>IDEAL</b>
Depth	<b>61.5%</b>
Table	<b>15.5%</b>
Girdle	<b>Medium To Slightly Thick (Faceted)</b>
Culet	<b>Pointed</b>
Polish	<b>EXCELLENT</b>
Symmetry	<b>EXCELLENT</b>
Fluorescence	<b>NONE</b>
Inscription(s)	<b>LABGROWN IGI LG515217429</b>
<b>Comments:</b> As Grown - No indication of post-growth treatment. This Laboratory Grown Diamond was created by High Pressure High Temperature (HPHT) growth process. Type II	



**IGI**