

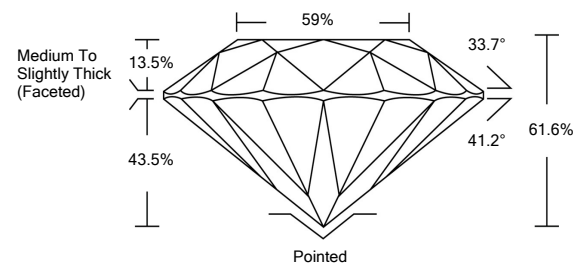


ELECTRONIC COPY

LABORATORY GROWN DIAMOND REPORT

LG512221030

PROPORTIONS



GRADING SCALES

| | | | | | | |
|-----------------------------|------------------------------|-----------------------------|------------------------|-------------------|-----------|---|
| COLOR GRADING SCALE | CL | NC | FT | VL | LT | |
| | COLORLESS D-F | NEAR COLORLESS G-J | FAINT K-M | VERY LIGHT N-R | LIGHT S-Z | |
| CLARITY (10x) GRADING SCALE | FL | IF | VVS | VS | SI | I |
| | FLAWLESS INTERNALLY FLAWLESS | VERY VERY SLIGHTLY INCLUDED | VERY SLIGHTLY INCLUDED | SLIGHTLY INCLUDED | INCLUDED | |

January 22, 2022

IGI Report Number

LG512221030

Description

LABORATORY GROWN DIAMOND

Shape and Cutting Style

ROUND BRILLIANT

Measurements

8.04 - 8.11 X 4.98 MM

GRADING RESULTS

Carat Weight

2.00 CARATS

Color Grade

D

Clarity Grade

VS 1

Cut Grade

IDEAL

January 22, 2022

IGI Report Number

LG512221030

Description

LABORATORY GROWN DIAMOND

Shape and Cutting Style

ROUND BRILLIANT

Measurements

8.04 - 8.11 X 4.98 MM

GRADING RESULTS

Carat Weight

2.00 CARATS

Color Grade

D

Clarity Grade

VS 1

Cut Grade

IDEAL

ADDITIONAL GRADING INFORMATION

Polish

EXCELLENT

Symmetry

EXCELLENT

Fluorescence

NONE

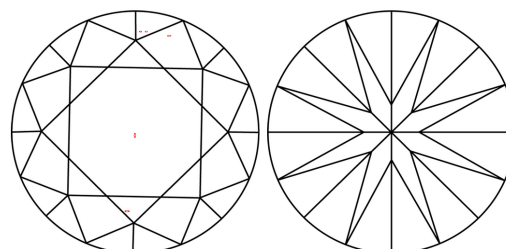
Inscription(s)

LABGROWN IGI LG512221030

Comments: As Grown - No indication of post-growth treatment.

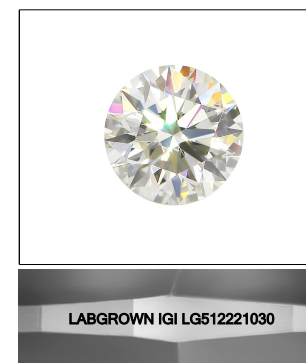
This Laboratory Grown Diamond was created by High Pressure High Temperature (HPHT) growth process. Type II

CLARITY CHARACTERISTICS



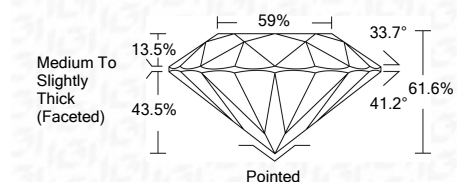
KEY TO SYMBOLS

Red symbols indicate internal characteristics.
Green symbols indicate external characteristics.



LASERSCRIBESM

Sample Image Used



ADDITIONAL GRADING INFORMATION

Polish

EXCELLENT

Symmetry

EXCELLENT

Fluorescence

NONE

Inscription(s)

LABGROWN IGI LG512221030

Comments: As Grown - No indication of post-growth treatment.
This Laboratory Grown Diamond was created by High Pressure High Temperature (HPHT) growth process. Type II



IGI

| | | | | | | | | | | | | |
|----------------------------|-------------|---|------|-------|-------|-----|------------------------------------|---------|-----------|-----------|------|--------------------------|
| IGI Report No. LG512221030 | 2.00 CARATS | D | VS 1 | IDEAL | 61.6% | 59% | Medium To Slightly Thick (Faceted) | Pointed | EXCELLENT | EXCELLENT | NONE | LABGROWN IGI LG512221030 |
| ROUND BRILLIANT | | | | | | | | | | | | |
| 8.04 - 8.11 X 4.98 MM | | | | | | | | | | | | |
| Carat Weight | | | | | | | | | | | | |
| Color Grade | | | | | | | | | | | | |
| Clarity Grade | | | | | | | | | | | | |
| Cut Grade | | | | | | | | | | | | |
| Depth | | | | | | | | | | | | |
| Table | | | | | | | | | | | | |
| Girdle | | | | | | | | | | | | |
| Culet | | | | | | | | | | | | |
| Polish | | | | | | | | | | | | |
| Symmetry | | | | | | | | | | | | |
| Fluorescence | | | | | | | | | | | | |
| Inscription(s) | | | | | | | | | | | | |

Comments: As Grown - No indication of post-growth treatment.
This Laboratory Grown Diamond was created by High Pressure High Temperature (HPHT) growth process. Type II