



IGI GEMOLOGICAL REPORT

IGI LABORATORY GROWN DIAMOND GRADING REPORT

01/21/2021

IGI Report Number LG459192214

Shape and Cutting Style CUSHION BRILLIANT

Measurements 7.69 X 7.26 X 4.43 MM

GRADING RESULTS

Carat Weight 2.02 CARATS

Color Grade E

Clarity Grade SI 1

ADDITIONAL GRADING INFORMATION

Polish EXCELLENT

Symmetry VERY GOOD

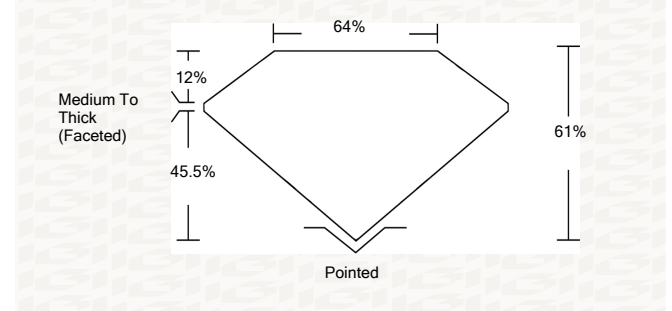
Fluorescence NONE

Inscription(s) LABGROWN IGI LG459192214

Comments: As Grown - No indication of post-growth treatment. This Laboratory Grown Diamond was created by High Pressure High Temperature (HPHT) growth process. Type II

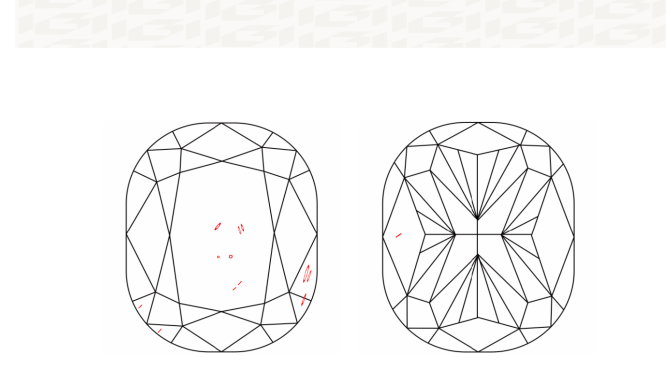
ADDITIONAL INFORMATION

PROPORTIONS



Pointed

CLARITY CHARACTERISTICS



LASERSCRIBE SM

KEY TO SYMBOLS

Red symbols indicate internal characteristics. Green symbols indicate external characteristics.

This Report is subject to the terms and conditions

© IGI 2000, edition 2019 all rights reserved.

GRADING SCALES

Table with 5 columns for Color Grading Scale (CL, NC, FT, VLT, LT) and Clarity (10x) Grading Scale (FL, IF, VVS, VS, SI, I).

The laboratory grown diamond described in this Report (Report) has been graded, tested, analyzed, examined and/or inscribed by International Gemological Institute (IGI). A laboratory grown diamond is one that has essentially the same chemical, physical and optical properties as a mined diamond...



LABGROWN IGI LG459192214

LASERSCRIBE SM



IGI LABORATORY GROWN DIAMOND GRADING REPORT

01/21/2021

IGI Report Number LG459192214

Shape and Cutting Style CUSHION BRILLIANT

Measurements 7.69 X 7.26 X 4.43 MM

GRADING RESULTS

Carat Weight 2.02 CARATS

Color Grade E

Clarity Grade SI 1

ADDITIONAL GRADING INFORMATION

Polish EXCELLENT

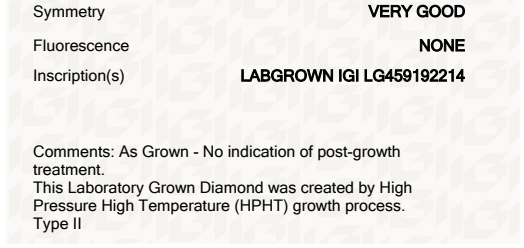
Symmetry VERY GOOD

Fluorescence NONE

Inscription(s) LABGROWN IGI LG459192214

Comments: As Grown - No indication of post-growth treatment. This Laboratory Grown Diamond was created by High Pressure High Temperature (HPHT) growth process. Type II

PROPORTIONS



CLARITY CHARACTERISTICS

Summary of report details including IGI logo, report number, measurements, grading results, and additional information.

