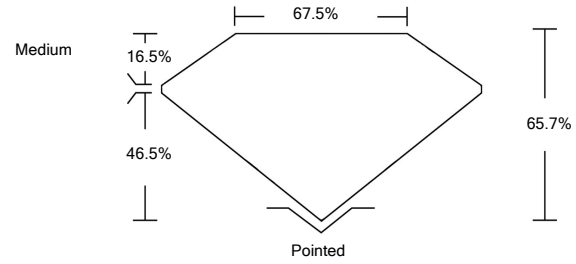




LG483124767

LABORATORY GROWN DIAMOND REPORT

PROPORTIONS



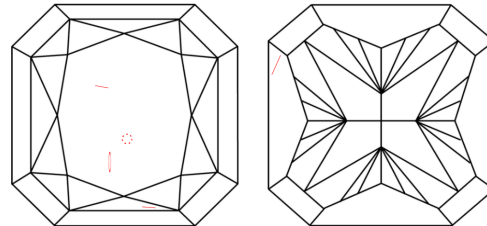
GRADING SCALES

Table with 5 columns for Color Grading Scale (CL, NC, FT, VLT, LT) and Clarity (10x) Grading Scale (FL, IF, VVS, VS, SI, I).

The laboratory grown diamond described in this Report (Report) has been graded, tested, analyzed, examined and/or inscribed by International Gemological Institute (IGI). A laboratory grown diamond is one that has essentially the same chemical, physical and optical properties as a mined diamond...

© INTERNATIONAL GEMOLOGICAL INSTITUTE, INC.

CLARITY CHARACTERISTICS



KEY TO SYMBOLS

Red symbols indicate internal characteristics. Green symbols indicate external characteristics.

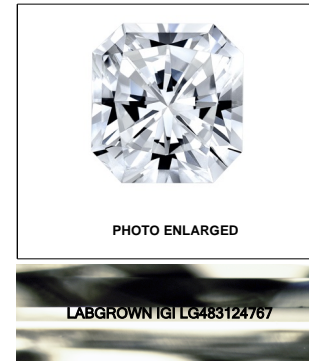


PHOTO ENLARGED

LASERSCRIBESM

07/01/2021

IGI Report Number LG483124767

Shape and Cutting Style CUT CORNERED SQUARE MODIFIED BRILLIANT

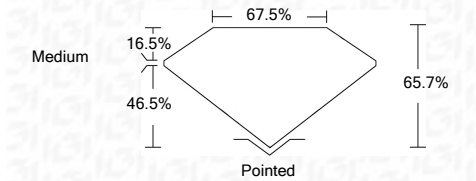
Measurements 6.42 x 6.41 x 4.21 mm

GRADING RESULTS

Carat Weight 1.51 CARAT

Color Grade F

Clarity Grade VS 2



ADDITIONAL GRADING INFORMATION

Polish EXCELLENT

Symmetry EXCELLENT

Fluorescence NONE

Inscription(s) LABGROWN IGI LG483124767

Comments: As Grown - No indication of post-growth treatment.

This Laboratory Grown Diamond was created by High Pressure High Temperature (HPHT) growth process. Type II



IGI

07/01/2021 IGI Report No. LG483124767 CUT CORNERED SQUARE MODIFIED BRILLIANT 6.42 x 6.41 x 4.21 mm 1.51 CARAT F VS 2 65.7% 67.5% Medium Pointed EXCELLENT EXCELLENT NONE LABGROWN IGI LG483124767

As Grown - No indication of post-growth treatment. This Laboratory Grown Diamond was created by High Pressure High Temperature (HPHT) growth process. Type II

