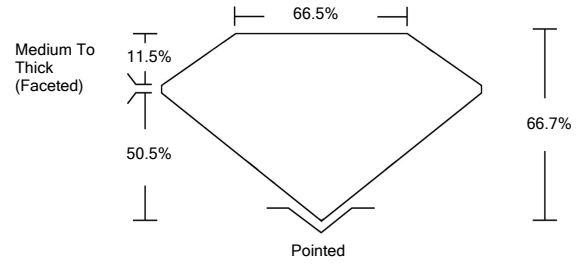




LG483194784

LABORATORY GROWN DIAMOND REPORT

PROPORTIONS



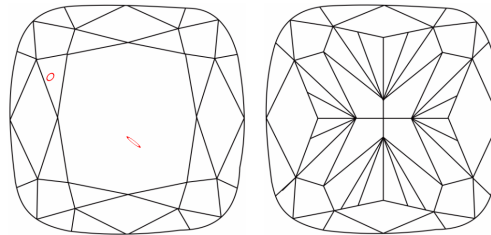
GRADING SCALES

Table with 5 columns for Color Grading Scale (CL, NC, FT, VLT, LT) and Clarity (10x) Grading Scale (FL, IF, VVS, VS, SI, I).

The laboratory grown diamond described in this Report (Report) has been graded, tested, analyzed, examined and/or inscribed by International Gemological Institute (IGI). A laboratory grown diamond is one that has essentially the same chemical, physical and optical properties as a mined diamond...

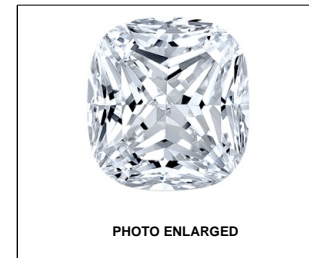
© INTERNATIONAL GEMOLOGICAL INSTITUTE, INC.

CLARITY CHARACTERISTICS



KEY TO SYMBOLS

Red symbols indicate internal characteristics. Green symbols indicate external characteristics.



LABGROWN IGI LG483194784

LASERSCRIBE<sup>SM</sup>

06/29/2021

IGI Report Number LG483194784

Shape and Cutting Style SQUARE CUSHION BRILLIANT

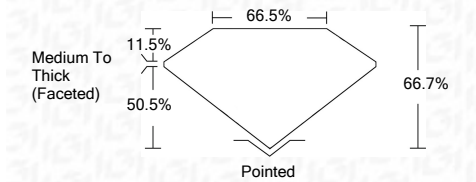
Measurements 7.29 x 6.93 x 4.62 mm

GRADING RESULTS

Carat Weight 2.01 CARATS

Color Grade E

Clarity Grade SI 1



ADDITIONAL GRADING INFORMATION

Polish EXCELLENT

Symmetry VERY GOOD

Fluorescence NONE

Inscription(s) LABGROWN IGI LG483194784

Comments: As Grown - No indication of post-growth treatment.

This Laboratory Grown Diamond was created by High Pressure High Temperature (HPHT) growth process. Type II



IGI

06/29/2021 IGI Report No. LG483194784 SQUARE CUSHION BRILLIANT 7.29 x 6.93 x 4.62 mm 2.01 CARATS E SI 1 66.7% 66.5% Medium To Thick (Faceted) Pointed EXCELLENT VERY GOOD NONE LABGROWN IGI LG483194784

As Grown - No indication of post-growth treatment. This Laboratory Grown Diamond was created by High Pressure High Temperature (HPHT) growth process. Type II

