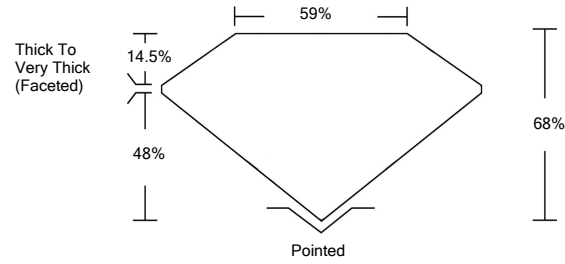




LG490177211

LABORATORY GROWN DIAMOND REPORT

PROPORTIONS

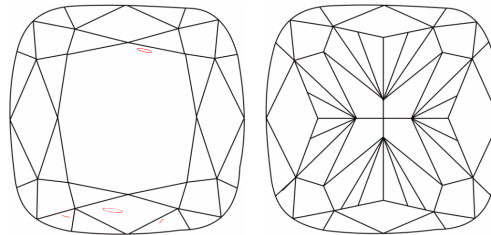


GRADING SCALES

Table with 5 columns for Color Grading Scale (CL, NC, FT, VLT, LT) and Clarity (10x) Grading Scale (FL, IF, VVS, VS, SI, I). Includes descriptions like 'COLORLESS D-F', 'NEAR COLORLESS G-J', etc.

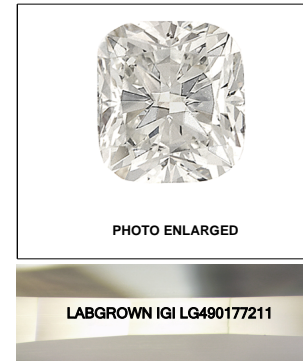
The laboratory grown diamond described in this Report (Report) has been graded, tested, analyzed, examined and/or inscribed by International Gemological Institute (IGI). A laboratory grown diamond is one that has essentially the same chemical, physical and optical properties as a mined diamond...

CLARITY CHARACTERISTICS



KEY TO SYMBOLS

Red symbols indicate internal characteristics. Green symbols indicate external characteristics.



08/27/2021

IGI Report Number LG490177211

Shape and Cutting Style CUSHION BRILLIANT

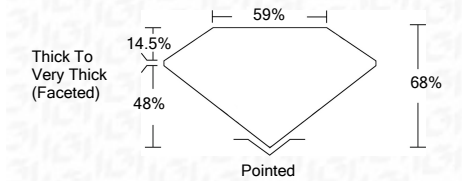
Measurements 7.07 x 6.85 x 4.66 mm

GRADING RESULTS

Carat Weight 2.00 CARATS

Color Grade D

Clarity Grade SI 1



ADDITIONAL GRADING INFORMATION

Polish EXCELLENT

Symmetry EXCELLENT

Fluorescence NONE

Inscription(s) LABGROWN IGI LG490177211

Comments: As Grown - No indication of post-growth treatment.

This Laboratory Grown Diamond was created by High Pressure High Temperature (HPHT) growth process. Type II



08/27/2021 IGI Report No. LG490177211 CUSHION BRILLIANT 7.07 x 6.85 x 4.66 mm 2.00 CARATS D SI 1 68% 59% Thick To Very Thick (Faceted) Pointed EXCELLENT EXCELLENT NONE LABGROWN IGI LG490177211

As Grown - No indication of post-growth treatment. This Laboratory Grown Diamond was created by High Pressure High Temperature (HPHT) growth process. Type II

