



LABORATORY GROWN DIAMOND REPORT

LG480149727

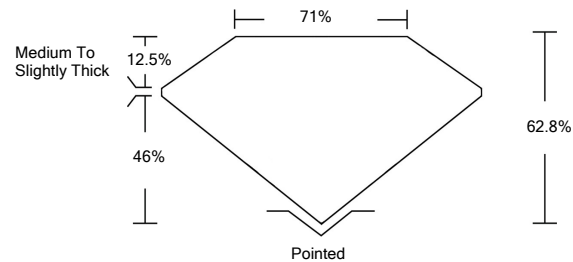
GRADING SCALES

Table with 5 columns: COLOR GRADING SCALE (CL, NC, FT, VLT, LT), CLARITY (10x) GRADING SCALE (FL, IF, VVS, VS, SI, I), and corresponding descriptions.

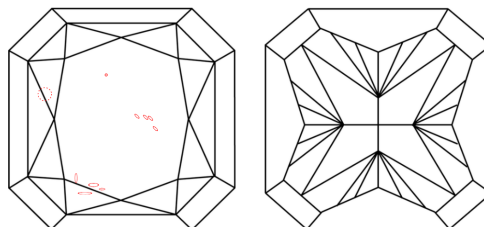
The laboratory grown diamond described in this Report (Report) has been graded, tested, analyzed, examined and/or inscribed by International Gemological Institute (IGI). A laboratory grown diamond is one that has essentially the same chemical, physical and optical properties as a mined diamond...

© INTERNATIONAL GEMOLOGICAL INSTITUTE, INC.

PROPORTIONS

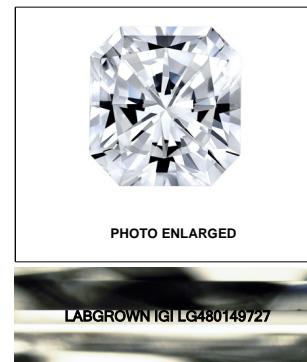


CLARITY CHARACTERISTICS



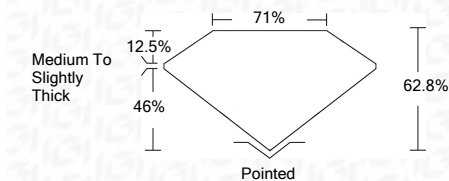
KEY TO SYMBOLS

Red symbols indicate internal characteristics. Green symbols indicate external characteristics.



LASERSCRIBESM

06/15/2021 IGI Report Number LG480149727 Shape and Cutting Style CUT CORNERED SQUARE MODIFIED BRILLIANT Measurements 7.12 x 7.01 x 4.40 mm GRADING RESULTS Carat Weight 2.00 CARATS Color Grade E Clarity Grade SI 1



ADDITIONAL GRADING INFORMATION

Polish EXCELLENT Symmetry EXCELLENT Fluorescence NONE Inscription(s) LABGROWN IGI LG480149727

Comments: As Grown - No indication of post-growth treatment. This Laboratory Grown Diamond was created by High Pressure High Temperature (HPHT) growth process. Type II



IGI

06/15/2021 IGI Report No. LG480149727 CUT CORNERED SQUARE MODIFIED BRILLIANT 7.12 x 7.01 x 4.40 mm Carat Weight 2.00 CARATS Color Grade E Clarity Grade SI 1 Depth 62.8% Table 71% Grade Medium To Slightly Thick Culet Pointed Polish EXCELLENT Symmetry EXCELLENT Fluorescence NONE Inscription(s) LABGROWN IGI LG480149727

Comments: As Grown - No indication of post-growth treatment. This Laboratory Grown Diamond was created by High Pressure High Temperature (HPHT) growth process. Type II