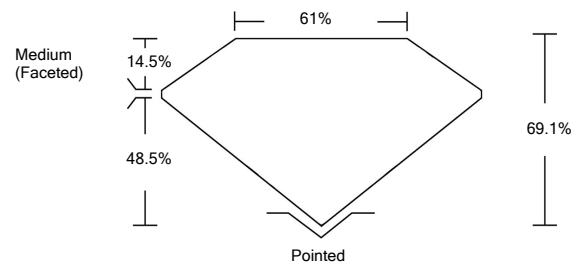




LG492123928

LABORATORY GROWN DIAMOND REPORT

PROPORTIONS



GRADING SCALES

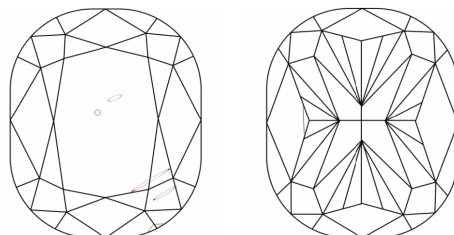
COLOR GRADING SCALE	CL COLORLESS D-F	NC NEAR COLORLESS G-J	FT FAINT K-M	VL VERY LIGHT N-R	LT LIGHT S-Z	
CLARITY (10x) GRADING SCALE	FL FLAWLESS INTERNALLY FLAWLESS	IF INTERNAL FLAWLESS	VVS VERY VERY SLIGHTLY INCLUDED	VS VERY SLIGHTLY INCLUDED	SI SLIGHTLY INCLUDED	I INCLUDED

The laboratory grown diamond described in this Report (Report) has been graded, tested, analyzed, examined and/or inscribed by International Gemological Institute (IGI). A laboratory grown diamond is one that has essentially the same chemical, physical and optical properties as a mined diamond, with the exception of being grown by man (a manufactured product). IGI employs and utilizes those techniques and equipment currently available to IGI, including, without limitation, 10X magnification, corrected triplet loupe, binocular microscope, master color comparison stones, non-contact-optical measuring device, Diamond Sure™, Diamond View™, Spectrophotometer and such other instruments and/or processes as deemed appropriate by IGI. This Report includes advanced security features. A duly accredited gemologist or jeweler can advise you with respect to the importance of and interrelationship between cut, color, clarity and carat weight.

THIS REPORT IS NEITHER A GUARANTEE, VALUATION, NOR APPRAISAL OF THE GEMSTONE DESCRIBED HEREIN. PLEASE REVIEW THE LIMITATIONS AND RESTRICTIONS SET FORTH ONLINE. FOR ADDITIONAL INFORMATION, IMPORTANT LIMITATIONS AND DISCLAIMERS, PLEASE GO TO WWW.IGI.ORG OR CALL 1-888-BUY-IGIS.

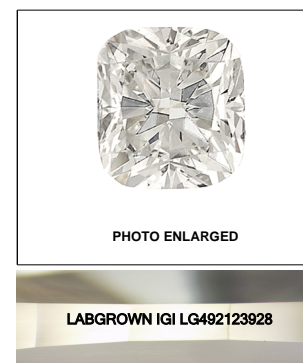
© INTERNATIONAL GEMOLOGICAL INSTITUTE, INC.

CLARITY CHARACTERISTICS



KEY TO SYMBOLS

Red symbols indicate internal characteristics.
Green symbols indicate external characteristics.



LABGROWN IGI LG492123928

LASERSCRIBESM

September 7, 2021

IGI Report Number

LG492123928

Description

**LABORATORY GROWN
DIAMOND**

Shape and Cutting Style

CUSHION BRILLIANT

Measurements

7.33 X 6.61 X 4.57 MM

GRADING RESULTS

Carat Weight

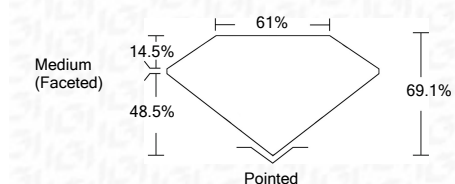
2.00 CARATS

Color Grade

D

Clarity Grade

SI 1



ADDITIONAL GRADING INFORMATION

Polish

EXCELLENT

Symmetry

GOOD

Fluorescence

NONE

Inscription(s)

LABGROWN IGI LG492123928

Comments: As Grown - No indication of post-growth treatment.
This Laboratory Grown Diamond was created by High Pressure High Temperature (HPHT) growth process.
Type II

September 7, 2021

IGI Report Number

LG492123928

Description

**LABORATORY GROWN
DIAMOND**

Shape and Cutting Style

CUSHION BRILLIANT

Measurements

7.33 X 6.61 X 4.57 MM

GRADING RESULTS

Carat Weight

2.00 CARATS

Color Grade

D

Clarity Grade

SI 1

ADDITIONAL GRADING INFORMATION

Polish

EXCELLENT

Symmetry

GOOD

Fluorescence

NONE

Inscription(s)

LABGROWN IGI LG492123928

Comments: As Grown - No indication of post-growth treatment.

This Laboratory Grown Diamond was created by High Pressure High Temperature (HPHT) growth process.
Type II



IGI

September 7, 2021
IGI Report No. LG492123928
CUSHION BRILLIANT
7.33 X 6.61 X 4.57 MM
Carat Weight: 2.00 CARATS
Color Grade: D
Clarity Grade: SI 1
Depth: 69.1%
Table: 61%
Grade: Medium (Faceted)
Cut: Pointed
Polish: EXCELLENT
Symmetry: GOOD
Fluorescence: NONE
Inscription(s): LABGROWN IGI LG492123928
Comments: As Grown - No indication of post-growth treatment.
This Laboratory Grown Diamond was created by High Pressure High Temperature (HPHT) growth process.
Type II