



LABORATORY GROWN DIAMOND REPORT

LG490177313

GRADING SCALES

COLOR GRADING SCALE	CL	NC	FT	VL	LT
	COLORLESS D-F	NEAR COLORLESS G-J	FAINT K-M	VERY LIGHT N-R	LIGHT S-Z
CLARITY (10X) GRADING SCALE	FL	VVS	VS	SI	I
	FLAWLESS INTERNALLY FLAWLESS	VERY VERY SLIGHTLY INCLUDED	VERY SLIGHTLY INCLUDED	SLIGHTLY INCLUDED	INCLUDED

The laboratory grown diamond described in this Report (Report) has been graded, tested, analyzed, examined and/or inscribed by International Gemological Institute (IGI). A laboratory grown diamond is one that has essentially the same chemical, physical and optical properties as a mined diamond, with the exception of being grown by man (a manufactured product). IGI employs and utilizes those techniques and equipment currently available to IGI, including, without limitation, 10X magnification, corrected triplet loupe, binocular microscope, master color comparison stones, non-contact-optical measuring device, Diamond Sure™, Diamond View™, Spectrophotometer and such other instruments and/or processes as deemed appropriate by IGI. This Report includes advanced security features. A duly accredited gemologist or jeweler can advise you with respect to the importance of and interrelationship between cut, color, clarity and carat weight.

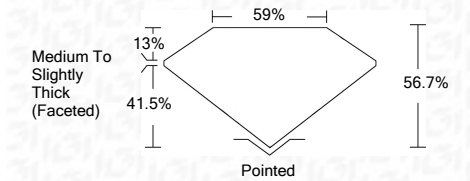
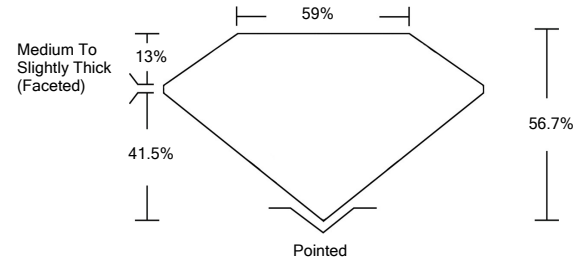
**THIS REPORT IS NEITHER A GUARANTEE, VALUATION, NOR APPRAISAL OF THE GEMSTONE DESCRIBED HEREIN. PLEASE REVIEW THE LIMITATIONS AND RESTRICTIONS SET FORTH ONLINE. FOR ADDITIONAL INFORMATION, IMPORTANT LIMITATIONS AND DISCLAIMERS, PLEASE GO TO WWW.IGI.ORG OR CALL 1-888-BUY-IGIS.**

© INTERNATIONAL GEMOLOGICAL INSTITUTE, INC.

08/28/2021  
 IGI Report Number **LG490177313**  
 Shape and Cutting Style **HEART BRILLIANT**  
 Measurements **7.54 x 9.04 x 5.13 mm**

**GRADING RESULTS**  
 Carat Weight **2.02 CARATS**  
 Color Grade **E**  
 Clarity Grade **VS 1**

PROPORTIONS

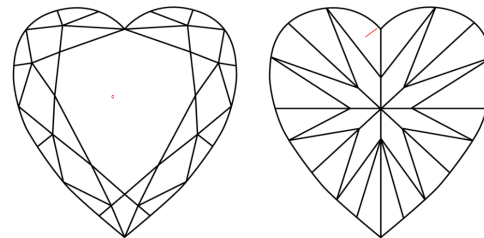


08/28/2021  
 IGI Report Number **LG490177313**  
 Shape and Cutting Style **HEART BRILLIANT**  
 Measurements **7.54 x 9.04 x 5.13 mm**

**GRADING RESULTS**  
 Carat Weight **2.02 CARATS**  
 Color Grade **E**  
 Clarity Grade **VS 1**

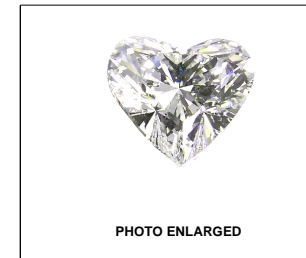
**ADDITIONAL GRADING INFORMATION**  
 Polish **EXCELLENT**  
 Symmetry **GOOD**  
 Fluorescence **NONE**  
 Inscription(s) **LABGROWN IGI LG490177313**

CLARITY CHARACTERISTICS



KEY TO SYMBOLS

Red symbols indicate internal characteristics.  
 Green symbols indicate external characteristics.



LASERSCRIBE<sup>SM</sup>

**ADDITIONAL GRADING INFORMATION**  
 Polish **EXCELLENT**  
 Symmetry **GOOD**  
 Fluorescence **NONE**  
 Inscription(s) **LABGROWN IGI LG490177313**

Comments: As Grown - No indication of post-growth treatment.  
 This Laboratory Grown Diamond was created by High Pressure High Temperature (HPHT) growth process.  
 Type II



IGI

08/28/2021  
 IGI Report No. **LG490177313**  
**HEART BRILLIANT**  
 7.54 x 9.04 x 5.13 mm  
 Carat Weight **2.02 CARATS**  
 Color Grade **E**  
 Clarity Grade **VS 1**  
 Depth **56.7%**  
 Table **59%**  
 Grade **Medium To Slightly Thick (Faceted)**  
 Cut **Pointed**  
 Polish **EXCELLENT**  
 Symmetry **GOOD**  
 Fluorescence **NONE**  
 Inscription(s) **LABGROWN IGI LG490177313**  
 Comments: **As Grown - No indication of post-growth treatment. This Laboratory Grown Diamond was created by High Pressure High Temperature (HPHT) growth process. Type II**