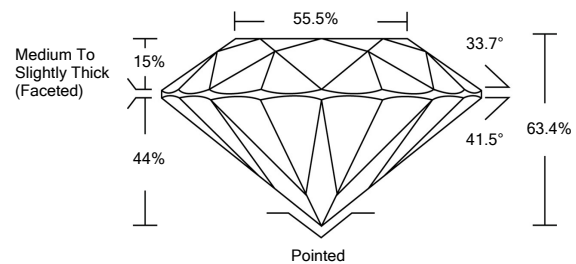




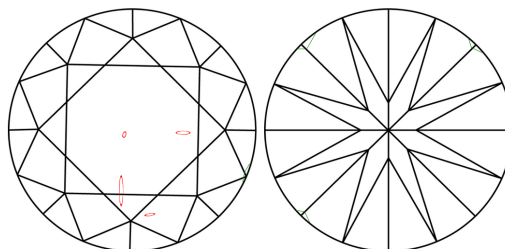
LG502139908

**LABORATORY GROWN DIAMOND REPORT**

**PROPORTIONS**



**CLARITY CHARACTERISTICS**



**KEY TO SYMBOLS**

Red symbols indicate internal characteristics.  
Green symbols indicate external characteristics.

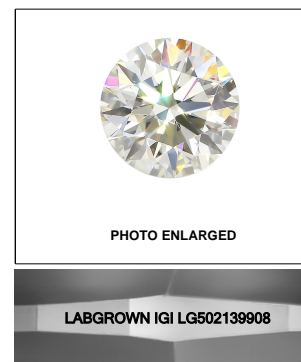
**GRADING SCALES**

<b>COLOR GRADING SCALE</b>	CL COLORLESS D-F	NC NEAR COLORLESS G-J	FT FAINT K-M	VLT VERY LIGHT N-R	LT LIGHT S-Z
<b>CLARITY (10X) GRADING SCALE</b>	FL FLAWLESS INTERNALLY FLAWLESS	IF VERY VERY SLIGHTLY INCLUDED	VVS VERY SLIGHTLY INCLUDED	VS SLIGHTLY INCLUDED	SI INCLUDED

The laboratory grown diamond described in this Report (Report) has been graded, tested, analyzed, examined and/or inscribed by International Gemological Institute (IGI). A laboratory grown diamond is one that has essentially the same chemical, physical and optical properties as a mined diamond, with the exception of being grown by man (a manufactured product). IGI employs and utilizes those techniques and equipment currently available to IGI, including, without limitation, 10X magnification, corrected triplet loupe, binocular microscope, master color comparison stones, non-contact-optical measuring device, Diamond Sure™, Diamond View™, Spectrophotometer and such other instruments and/or processes as deemed appropriate by IGI. This Report includes advanced security features. A duly accredited gemologist or jeweler can advise you with respect to the importance of and interrelationship between cut, color, clarity and carat weight.

**THIS REPORT IS NEITHER A GUARANTEE, VALUATION, NOR APPRAISAL OF THE GEMSTONE DESCRIBED HEREIN. PLEASE REVIEW THE LIMITATIONS AND RESTRICTIONS SET FORTH ONLINE. FOR ADDITIONAL INFORMATION, IMPORTANT LIMITATIONS AND DISCLAIMERS, PLEASE GO TO WWW.IGI.ORG OR CALL 1-888-BUY-IGIS.**

© INTERNATIONAL GEMOLOGICAL INSTITUTE, INC.



LABGROWN IGI LG502139908

LASERSCRIBE<sup>SM</sup>

November 30, 2021

IGI Report Number

**LG502139908**

Description

**LABORATORY GROWN  
DIAMOND**

Shape and Cutting Style

**ROUND BRILLIANT**

Measurements

**7.23 - 7.29 X 4.61 MM**

**GRADING RESULTS**

Carat Weight

**1.50 CARAT**

Color Grade

**E**

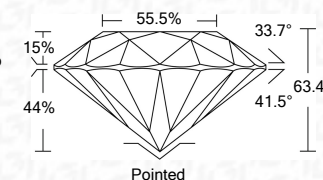
Clarity Grade

**SI 2**

Cut Grade

**EXCELLENT**

Medium To Slightly Thick (Faceted)



**ADDITIONAL GRADING INFORMATION**

Polish

**EXCELLENT**

Symmetry

**VERY GOOD**

Fluorescence

**NONE**

Inscription(s)

**LABGROWN IGI LG502139908**

Comments: As Grown - No indication of post-growth treatment.  
This Laboratory Grown Diamond was created by High Pressure High Temperature (HPHT) growth process.  
Type II

November 30, 2021

IGI Report Number

**LG502139908**

Description

**LABORATORY GROWN  
DIAMOND**

Shape and Cutting Style

**ROUND BRILLIANT**

Measurements

**7.23 - 7.29 X 4.61 MM**

**GRADING RESULTS**

Carat Weight

**1.50 CARAT**

Color Grade

**E**

Clarity Grade

**SI 2**

Cut Grade

**EXCELLENT**

**ADDITIONAL GRADING INFORMATION**

Polish

**EXCELLENT**

Symmetry

**VERY GOOD**

Fluorescence

**NONE**

Inscription(s)

**LABGROWN IGI LG502139908**

Comments: As Grown - No indication of post-growth treatment.  
This Laboratory Grown Diamond was created by High Pressure High Temperature (HPHT) growth process.  
Type II



**IGI**

November 30, 2021	IGI Report No. LG502139908	1.50 CARAT	E	SI 2	EXCELLENT	63.4%	55.5%	Medium To Slightly Thick (Faceted)	Pointed	EXCELLENT	VERY GOOD	NONE	LABGROWN IGI LG502139908
IGI Report No. LG502139908	ROUND BRILLIANT	7.23 - 7.29 X 4.61 MM	Color Grade	Clarity Grade	Cut Grade	Depth	Table	Girdle	Culet	Polish	Symmetry	Fluorescence	Inscription(s)

Comments: As Grown - No indication of post-growth treatment.  
This Laboratory Grown Diamond was created by High Pressure High Temperature (HPHT) growth process.  
Type II