



**INTERNATIONAL
GEMOLOGICAL
INSTITUTE**

**ELECTRONIC COPY LABORATORY GROWN
DIAMOND REPORT**

**IGI LABORATORY GROWN
DIAMOND ID REPORT**

January 11, 2022
IGI Report Number **LG510172931**

LABORATORY GROWN DIAMOND REPORT

LG510172931

ROUND BRILLIANT

5.65 - 5.69 X 3.53 MM
Carat Weight 0.70 CARAT
Color Grade D
Clarity Grade VS 2
Cut Grade IDEAL
Polish EXCELLENT
Symmetry VERY GOOD
Fluorescence NONE
Inscription(s) LABGROWN IGI
LG510172931

IGI LABORATORY GROWN DIAMOND IDENTIFICATION REPORT

January 11, 2022
IGI Report Number LG510172931
Description LABORATORY GROWN DIAMOND
Shape and Cutting Style ROUND BRILLIANT
Measurements 5.65 - 5.69 X 3.53 MM

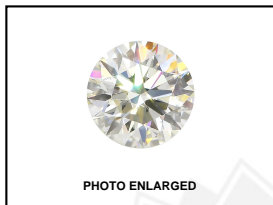


PHOTO ENLARGED

LABGROWN IGI LG510172931

Comments: As Grown - No indication of post-growth treatment.
This Laboratory Grown Diamond was created by High Pressure High Temperature (HPHT) growth process.
Type II

GRADING RESULTS

Carat Weight 0.70 CARAT
Color Grade D
Clarity Grade VS 2
Cut Grade IDEAL

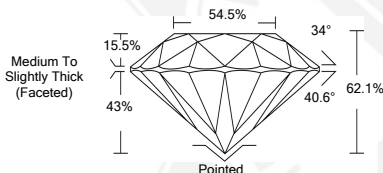
LASERSCRIBESM



ADDITIONAL GRADING INFORMATION

Polish EXCELLENT
Symmetry VERY GOOD
Fluorescence NONE
Inscription(s) LABGROWN IGI LG510172931

Comments: As Grown - No indication of post-growth treatment.
This Laboratory Grown Diamond was created by High Pressure High Temperature (HPHT) growth process.
Type II



**IGI LABORATORY GROWN
DIAMOND ID REPORT**

January 11, 2022
IGI Report Number **LG510172931**

ROUND BRILLIANT

5.65 - 5.69 X 3.53 MM
Carat Weight 0.70 CARAT
Color Grade D
Clarity Grade VS 2
Cut Grade IDEAL
Polish EXCELLENT
Symmetry VERY GOOD
Fluorescence NONE
Inscription(s) LABGROWN IGI
LG510172931

Comments: As Grown - No indication of post-growth treatment.
This Laboratory Grown Diamond was created by High Pressure High Temperature (HPHT) growth process.
Type II

THIS DOCUMENT WAS PRODUCED WITH THE FOLLOWING SECURITY MEASURES: SPECIAL DOCUMENT PAPER, INK SCREENS, WATERMARK, BACKGROUND DESIGN, HOLOGRAM AND OTHER SECURITY FEATURES NOT LISTED AND DO EXCEED DOCUMENT SECURITY INDUSTRY GUIDELINES.

For Terms & Conditions and to verify this report, please visit www.igi.org