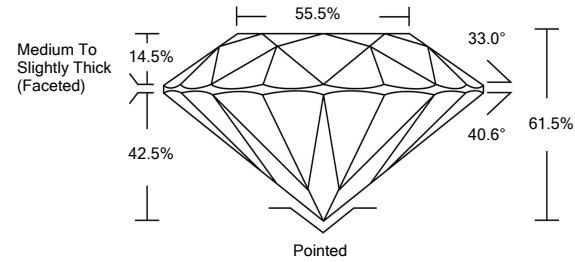




LG485160835

LABORATORY GROWN DIAMOND REPORT

PROPORTIONS



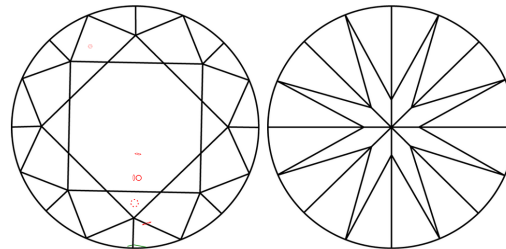
GRADING SCALES

Table with 5 columns for Color Grading Scale (CL to LT) and Clarity (10x) Grading Scale (FL to I).

The laboratory grown diamond described in this Report (Report) has been graded, tested, analyzed, examined and/or inscribed by International Gemological Institute (IGI). A laboratory grown diamond is one that has essentially the same chemical, physical and optical properties as a mined diamond...

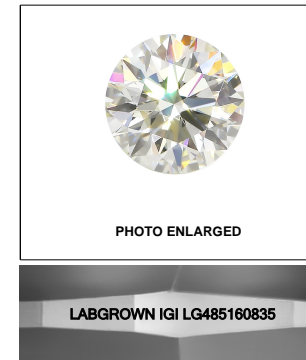
© INTERNATIONAL GEMOLOGICAL INSTITUTE, INC.

CLARITY CHARACTERISTICS



KEY TO SYMBOLS

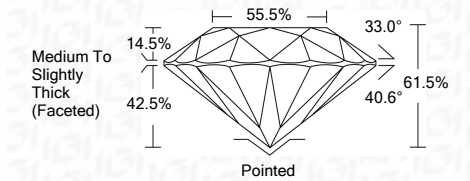
Red symbols indicate internal characteristics. Green symbols indicate external characteristics.



LASERSCRIBESM



07/13/2021 IGI Report Number LG485160835 Shape and Cutting Style ROUND BRILLIANT Measurements 8.05 - 8.11 x 4.97 mm GRADING RESULTS Carat Weight 2.01 CARATS Color Grade D Clarity Grade SI 1 Cut Grade IDEAL



ADDITIONAL GRADING INFORMATION Polish EXCELLENT Symmetry EXCELLENT Fluorescence NONE Inscription(s) LABGROWN IGI LG485160835

Comments: As Grown - No indication of post-growth treatment. This Laboratory Grown Diamond was created by High Pressure High Temperature (HPHT) growth process. Type II



IGI

07/13/2021 IGI Report No. LG485160835 ROUND BRILLIANT 8.05 - 8.11 x 4.97 mm 2.01 CARATS D SI 1 IDEAL 61.5% 55.5% Medium To Slightly Thick (Faceted) Pointed EXCELLENT EXCELLENT NONE LABGROWN IGI LG485160835

