



**ELECTRONIC COPY**

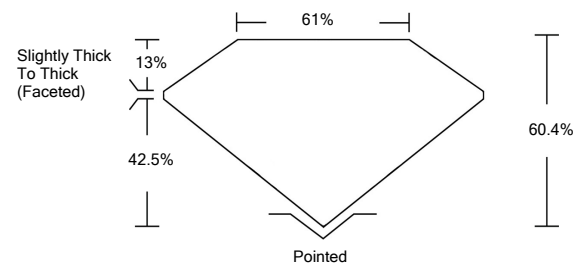
**LABORATORY GROWN DIAMOND REPORT**

|                                       |                                     |
|---------------------------------------|-------------------------------------|
| February 14, 2022                     |                                     |
| IGI Report Number                     | <b>LG515231473</b>                  |
| Description                           | <b>LABORATORY GROWN<br/>DIAMOND</b> |
| Shape and Cutting Style               | <b>OVAL BRILLIANT</b>               |
| Measurements                          | <b>8.35 X 6.11 X 3.69 MM</b>        |
| <b>GRADING RESULTS</b>                |                                     |
| Carat Weight                          | <b>1.20 CARAT</b>                   |
| Color Grade                           | <b>D</b>                            |
| Clarity Grade                         | <b>VVS 2</b>                        |
| <b>ADDITIONAL GRADING INFORMATION</b> |                                     |
| Polish                                | <b>EXCELLENT</b>                    |
| Symmetry                              | <b>EXCELLENT</b>                    |
| Fluorescence                          | <b>NONE</b>                         |
| Inscription(s)                        | <b>LABGROWN IGI LG515231473</b>     |

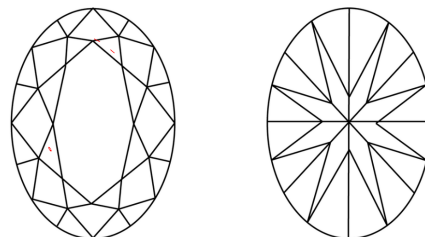
Comments: As Grown - No indication of post-growth treatment.  
This Laboratory Grown Diamond was created by High Pressure High Temperature (HPHT) growth process. Type II

LG515231473

**PROPORTIONS**



**CLARITY CHARACTERISTICS**

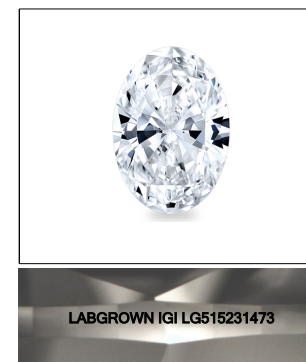


**KEY TO SYMBOLS**

Red symbols indicate internal characteristics.  
Green symbols indicate external characteristics.

**GRADING SCALES**

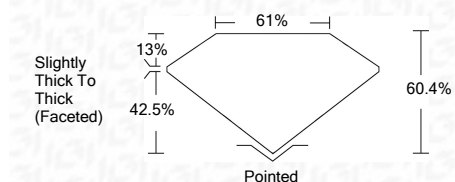
|                             |                              |                             |                        |                   |           |   |
|-----------------------------|------------------------------|-----------------------------|------------------------|-------------------|-----------|---|
| COLOR GRADING SCALE         | CL                           | NC                          | FT                     | VL                | LT        |   |
|                             | COLORLESS D-F                | NEAR COLORLESS G-J          | FAINT K-M              | VERY LIGHT N-R    | LIGHT S-Z |   |
| CLARITY (10x) GRADING SCALE | FL                           | IF                          | VVS                    | VS                | SI        | I |
|                             | FLAWLESS INTERNALLY FLAWLESS | VERY VERY SLIGHTLY INCLUDED | VERY SLIGHTLY INCLUDED | SLIGHTLY INCLUDED | INCLUDED  |   |



**LASERSCRIBE<sup>SM</sup>**

Sample Image Used

|                         |                                     |
|-------------------------|-------------------------------------|
| February 14, 2022       |                                     |
| IGI Report Number       | <b>LG515231473</b>                  |
| Description             | <b>LABORATORY GROWN<br/>DIAMOND</b> |
| Shape and Cutting Style | <b>OVAL BRILLIANT</b>               |
| Measurements            | <b>8.35 X 6.11 X 3.69 MM</b>        |
| <b>GRADING RESULTS</b>  |                                     |
| Carat Weight            | <b>1.20 CARAT</b>                   |
| Color Grade             | <b>D</b>                            |
| Clarity Grade           | <b>VVS 2</b>                        |



**ADDITIONAL GRADING INFORMATION**

|                |                                 |
|----------------|---------------------------------|
| Polish         | <b>EXCELLENT</b>                |
| Symmetry       | <b>EXCELLENT</b>                |
| Fluorescence   | <b>NONE</b>                     |
| Inscription(s) | <b>LABGROWN IGI LG515231473</b> |

Comments: As Grown - No indication of post-growth treatment.  
This Laboratory Grown Diamond was created by High Pressure High Temperature (HPHT) growth process. Type II



**IGI**



|  |  |
|--|--|
| February 14, 2022  |  |
| IGI Report No. LG515231473   |  |
| <b>OVAL BRILLIANT</b>  |  |
| <b>8.35 X 6.11 X 3.69 MM</b>   |  |
| Carat Weight   | <b>1.20 CARAT</b>                        |
| Color Grade  | <b>D</b>                                 |
| Clarity Grade  | <b>VVS 2</b>                             |
| Depth  | <b>60.4%</b>                             |
| Table  | <b>61%</b>                               |
| Girdle   | <b>Slightly Thick To Thick (Faceted)</b> |
| Culet  | <b>Pointed</b>                           |
| Polish   | <b>EXCELLENT</b>                         |
| Symmetry   | <b>EXCELLENT</b>                         |
| Fluorescence   | <b>NONE</b>                              |
| Inscription(s)   | <b>LABGROWN IGI LG515231473</b>          |
| Comments:  |  |
| As Grown - No indication of post-growth treatment.<br>This Laboratory Grown Diamond was created by High Pressure High Temperature (HPHT) growth process. Type II |  |