



LABORATORY GROWN DIAMOND REPORT

LG468171261

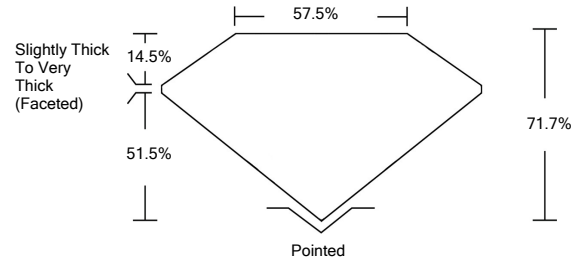
GRADING SCALES

Table with 5 columns for Color Grading Scale (CL, NC, FT, VLT, LT) and Clarity (10x) Grading Scale (FL, IF, VVS, VS, SI, I). Includes descriptions like 'COLORLESS D-F', 'NEAR COLORLESS G-J', etc.

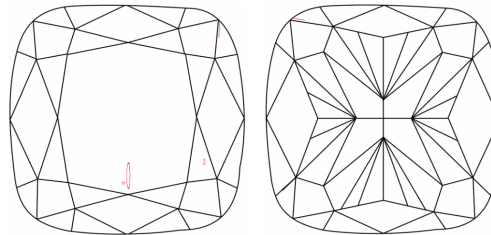
The laboratory grown diamond described in this Report (Report) has been graded, tested, analyzed, examined and/or inscribed by International Gemological Institute (IGI). A laboratory grown diamond is one that has essentially the same chemical, physical and optical properties as a mined diamond...

© INTERNATIONAL GEMOLOGICAL INSTITUTE, INC.

PROPORTIONS

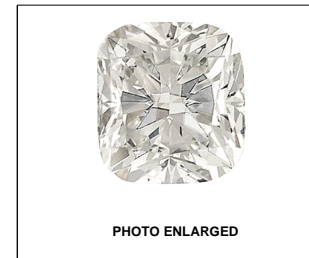


CLARITY CHARACTERISTICS



KEY TO SYMBOLS

Red symbols indicate internal characteristics. Green symbols indicate external characteristics.



LASERSCRIBE<sup>SM</sup>

03/27/2021

IGI Report Number LG468171261

Shape and Cutting Style CUSHION MODIFIED BRILLIANT

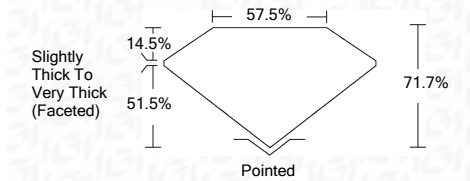
Measurements 7.01 x 6.97 x 5.00 mm

GRADING RESULTS

Carat Weight 2.00 CARATS

Color Grade D

Clarity Grade SI 1



ADDITIONAL GRADING INFORMATION

Polish EXCELLENT

Symmetry EXCELLENT

Fluorescence NONE

Inscription(s) LABGROWN IGI LG468171261

Comments: As Grown - No indication of post-growth treatment. This Laboratory Grown Diamond was created by High Pressure High Temperature (HPHT) growth process. Type II



IGI

Summary table of report details: 03/27/2021, IGI Report No. LG468171261, CUSHION MODIFIED BRILLIANT, 7.01 x 6.97 x 5.00 mm, 2.00 CARATS, Color Grade D, Clarity Grade SI 1, Depth 71.7%, Table 57.5%, Slightly Thick To Very Thick (Faceted), Pointed, EXCELLENT Polish, EXCELLENT Symmetry, NONE Fluorescence, LABGROWN IGI LG468171261 Inscription(s).

As Grown - No indication of post-growth treatment. This Laboratory Grown Diamond was created by High Pressure High Temperature (HPHT) growth process. Type II

