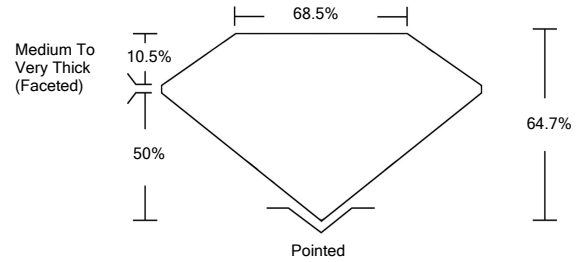




LG483194786

LABORATORY GROWN DIAMOND REPORT

PROPORTIONS

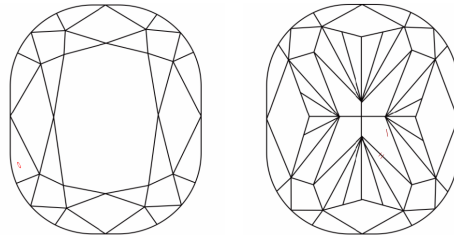


GRADING SCALES

Table with 5 columns for Color Grading Scale (CL, NC, FT, VLT, LT) and Clarity (10x) Grading Scale (FL, IF, VVS, VS, SI, I). Includes descriptions like 'COLORLESS D-F', 'NEAR COLORLESS G-J', etc.

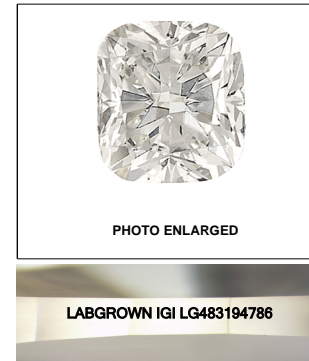
The laboratory grown diamond described in this Report (Report) has been graded, tested, analyzed, examined and/or inscribed by International Gemological Institute (IGI). A laboratory grown diamond is one that has essentially the same chemical, physical and optical properties as a mined diamond...

CLARITY CHARACTERISTICS



KEY TO SYMBOLS

Red symbols indicate internal characteristics. Green symbols indicate external characteristics.



LASERSCRIBE<sup>SM</sup>

06/29/2021

IGI Report Number LG483194786

Shape and Cutting Style CUSHION BRILLIANT

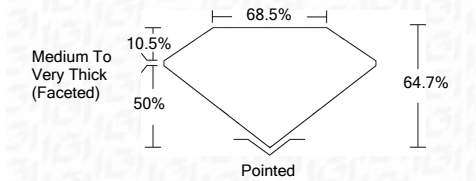
Measurements 7.46 x 7.03 x 4.55 mm

GRADING RESULTS

Carat Weight 2.01 CARATS

Color Grade E

Clarity Grade VS 1



ADDITIONAL GRADING INFORMATION

Polish EXCELLENT

Symmetry VERY GOOD

Fluorescence NONE

Inscription(s) LABGROWN IGI LG483194786

Comments: As Grown - No indication of post-growth treatment.

This Laboratory Grown Diamond was created by High Pressure High Temperature (HPHT) growth process. Type II



Summary table of report details: 06/29/2021, IGI Report No. LG483194786, CUSHION BRILLIANT, 7.46 x 7.03 x 4.55 mm, 2.01 CARATS, VS 1, E, 64.7%, 68.5%, Medium To Very Thick (Faceted), Pointed, EXCELLENT, VERY GOOD, NONE, LABGROWN IGI LG483194786.

As Grown - No indication of post-growth treatment. This Laboratory Grown Diamond was created by High Pressure High Temperature (HPHT) growth process. Type II

