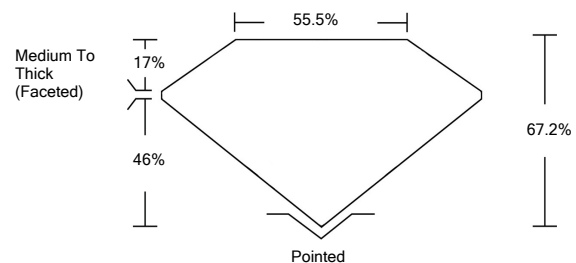




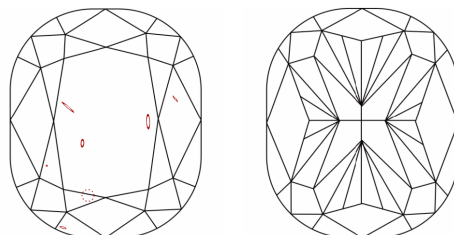
LG494175701

LABORATORY GROWN DIAMOND REPORT

PROPORTIONS



CLARITY CHARACTERISTICS



KEY TO SYMBOLS

Red symbols indicate internal characteristics.
Green symbols indicate external characteristics.

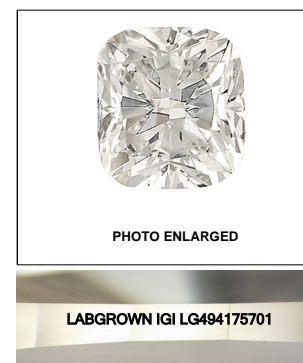
GRADING SCALES

COLOR GRADING SCALE	CL COLORLESS D-F	NC NEAR COLORLESS G-J	FT FAINT K-M	VL VERY LIGHT N-R	LT LIGHT S-Z	
CLARITY (10x) GRADING SCALE	FL FLAWLESS INTERNALLY FLAWLESS	IF INTERNAL FLAWLESS	VVS VERY VERY SLIGHTLY INCLUDED	VS VERY SLIGHTLY INCLUDED	SI SLIGHTLY INCLUDED	I INCLUDED

The laboratory grown diamond described in this Report (Report) has been graded, tested, analyzed, examined and/or inscribed by International Gemological Institute (IGI). A laboratory grown diamond is one that has essentially the same chemical, physical and optical properties as a mined diamond, with the exception of being grown by man (a manufactured product). IGI employs and utilizes those techniques and equipment currently available to IGI, including, without limitation, 10X magnification, corrected triplet loupe, binocular microscope, master color comparison stones, non-contact-optical measuring device, Diamond Sure™, Diamond View™, Spectrophotometer and such other instruments and/or processes as deemed appropriate by IGI. This Report includes advanced security features. A duly accredited gemologist or jeweler can advise you with respect to the importance of and interrelationship between cut, color, clarity and carat weight.

THIS REPORT IS NEITHER A GUARANTEE, VALUATION, NOR APPRAISAL OF THE GEMSTONE DESCRIBED HEREIN. PLEASE REVIEW THE LIMITATIONS AND RESTRICTIONS SET FORTH ONLINE. FOR ADDITIONAL INFORMATION, IMPORTANT LIMITATIONS AND DISCLAIMERS, PLEASE GO TO WWW.IGI.ORG OR CALL 1-888-BUY-IGIS.

© INTERNATIONAL GEMOLOGICAL INSTITUTE, INC.



LASERSCRIBESM

September 20, 2021

IGI Report Number **LG494175701**

Description **LABORATORY GROWN
DIAMOND**

Shape and Cutting Style **CUSHION BRILLIANT**

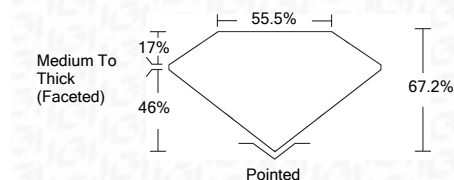
Measurements **7.98 X 7.14 X 4.80 MM**

GRADING RESULTS

Carat Weight **2.39 CARATS**

Color Grade **D**

Clarity Grade **SI 2**



ADDITIONAL GRADING INFORMATION

Polish **EXCELLENT**

Symmetry **EXCELLENT**

Fluorescence **NONE**

Inscription(s) **LABGROWN IGI LG494175701**

Comments: As Grown - No indication of post-growth treatment.
This Laboratory Grown Diamond was created by High Pressure High Temperature (HPHT) growth process.
Type II

September 20, 2021

IGI Report Number **LG494175701**

Description **LABORATORY GROWN
DIAMOND**

Shape and Cutting Style **CUSHION BRILLIANT**

Measurements **7.98 X 7.14 X 4.80 MM**

GRADING RESULTS

Carat Weight **2.39 CARATS**

Color Grade **D**

Clarity Grade **SI 2**

ADDITIONAL GRADING INFORMATION

Polish **EXCELLENT**

Symmetry **EXCELLENT**

Fluorescence **NONE**

Inscription(s) **LABGROWN IGI LG494175701**

Comments: As Grown - No indication of post-growth treatment.

This Laboratory Grown Diamond was created by High Pressure High Temperature (HPHT) growth process.
Type II



September 20, 2021	2.39 CARATS	D
IGI Report No. LG494175701	SI 2	67.2%
CUSHION BRILLIANT	67.2%	55.5%
7.98 X 7.14 X 4.80 MM	Medium To Thick (Faceted)	Pointed
Carat Weight	EXCELLENT	EXCELLENT
Color Grade	EXCELLENT	NONE
Clarity Grade	LABGROWN IGI	LABGROWN IGI
Depth	LABGROWN IGI	LG494175701
Table	EXCELLENT	
Grade	EXCELLENT	
Culet	EXCELLENT	
Polish	EXCELLENT	
Symmetry	EXCELLENT	
Fluorescence	EXCELLENT	
Inscription(s)	EXCELLENT	
Comments:	EXCELLENT	

As Grown - No indication of post-growth treatment.
This Laboratory Grown Diamond was created by High Pressure High Temperature (HPHT) growth process.
Type II