



LABORATORY GROWN DIAMOND REPORT

LG485160991

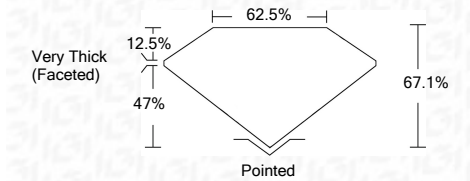
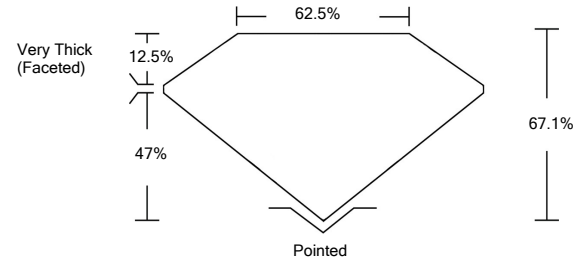
GRADING SCALES

Table with 5 columns for Color Grading Scale (CL, NC, FT, VLT, LT) and Clarity (10x) Grading Scale (FL, IF, VVS, VS, SI, I).

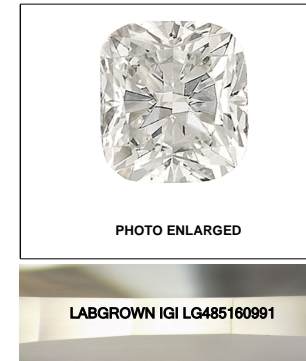
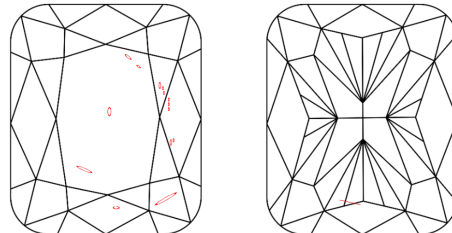
The laboratory grown diamond described in this Report (Report) has been graded, tested, analyzed, examined and/or inscribed by International Gemological Institute (IGI). A laboratory grown diamond is one that has essentially the same chemical, physical and optical properties as a mined diamond...

07/19/2021 IGI Report Number LG485160991 Shape and Cutting Style CUSHION BRILLIANT Measurements 8.60 x 7.63 x 5.12 mm GRADING RESULTS Carat Weight 3.01 CARATS Color Grade E Clarity Grade SI 1

PROPORTIONS



CLARITY CHARACTERISTICS



KEY TO SYMBOLS

Red symbols indicate internal characteristics. Green symbols indicate external characteristics.

ADDITIONAL GRADING INFORMATION Polish EXCELLENT Symmetry EXCELLENT Fluorescence NONE Inscription(s) LABGROWN IGI LG485160991

Comments: As Grown - No indication of post-growth treatment. This Laboratory Grown Diamond was created by High Pressure High Temperature (HPHT) growth process. Type II

07/19/2021 IGI Report Number LG485160991 Shape and Cutting Style CUSHION BRILLIANT Measurements 8.60 x 7.63 x 5.12 mm GRADING RESULTS Carat Weight 3.01 CARATS Color Grade E Clarity Grade SI 1

ADDITIONAL GRADING INFORMATION

Polish EXCELLENT Symmetry EXCELLENT Fluorescence NONE Inscription(s) LABGROWN IGI LG485160991

Comments: As Grown - No indication of post-growth treatment. This Laboratory Grown Diamond was created by High Pressure High Temperature (HPHT) growth process. Type II



IGI

07/19/2021 IGI Report No. LG485160991 CUSHION BRILLIANT 8.60 x 7.63 x 5.12 mm Carat Weight 3.01 CARATS Color Grade E Clarity Grade SI 1 Depth 67.1% Table 62.5% Grade Very Thick (Faceted) Cut Pointed Polish EXCELLENT Symmetry EXCELLENT Fluorescence NONE Inscription(s) LABGROWN IGI LG485160991

As Grown - No indication of post-growth treatment. This Laboratory Grown Diamond was created by High Pressure High Temperature (HPHT) growth process. Type II