



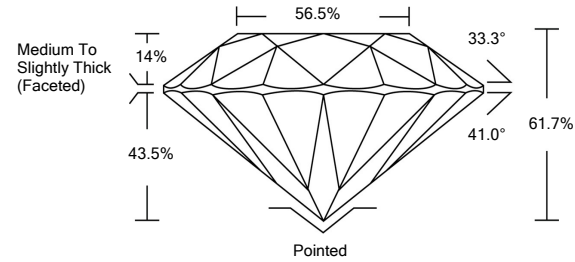
LABORATORY GROWN DIAMOND REPORT

LG487172741

GRADING SCALES

Table with 5 columns: COLOR GRADING SCALE (CL, NC, FT, VLT, LT), CLARITY (10x) GRADING SCALE (FL, IF, VVS, VS, SI, I). Includes sub-labels like COLORLESS D-F, NEAR COLORLESS G-J, etc.

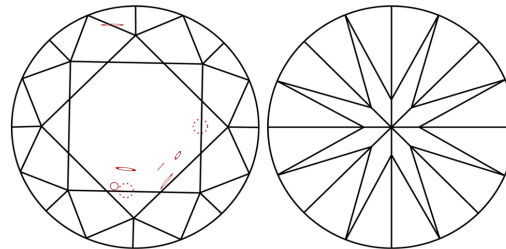
PROPORTIONS



The laboratory grown diamond described in this Report (Report) has been graded, tested, analyzed, examined and/or inscribed by International Gemological Institute (IGI). A laboratory grown diamond is one that has essentially the same chemical, physical and optical properties as a mined diamond...

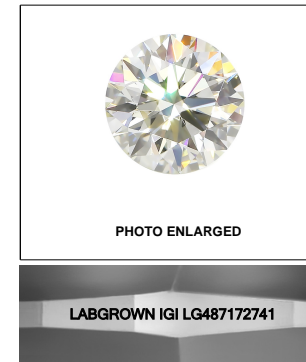
© INTERNATIONAL GEMOLOGICAL INSTITUTE, INC.

CLARITY CHARACTERISTICS



KEY TO SYMBOLS

Red symbols indicate internal characteristics. Green symbols indicate external characteristics.



LASERSCRIBESM

07/16/2021

IGI Report Number LG487172741

Shape and Cutting Style ROUND BRILLIANT

Measurements 8.32 - 8.37 x 5.15 mm

GRADING RESULTS

Carat Weight 2.20 CARATS

Color Grade E

Clarity Grade SI 2

Cut Grade IDEAL

ADDITIONAL GRADING INFORMATION

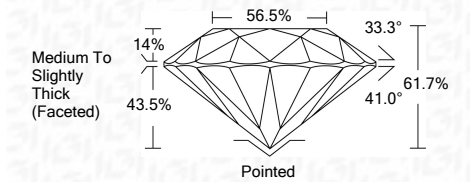
Polish EXCELLENT

Symmetry EXCELLENT

Fluorescence NONE

Inscription(s) LABGROWN IGI LG487172741

Comments: As Grown - No indication of post-growth treatment. This Laboratory Grown Diamond was created by High Pressure High Temperature (HPHT) growth process. Type II



IGI

Summary table of report details: IGI Report No. LG487172741, ROUND BRILLIANT, 8.32 - 8.37 x 5.15 mm, 2.20 CARATS, E, SI 2, IDEAL, 61.7%, 56.5%, Medium To Slightly Thick (Faceted), Pointed, EXCELLENT, EXCELLENT, NONE, LABGROWN IGI LG487172741.

