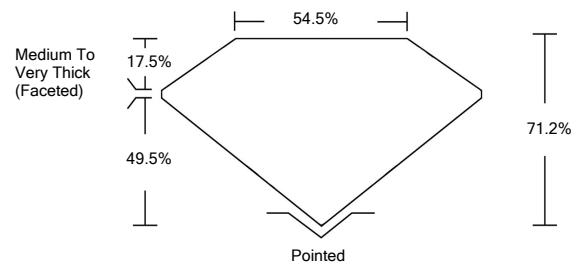




LABORATORY GROWN DIAMOND REPORT

LG487172771

PROPORTIONS



GRADING SCALES

| COLOR GRADING SCALE | CL | NC | FT | VL | LT | |
|-----------------------------|------------------------------|-----------------------------|------------------------|-------------------|-----------|---|
| COLORLESS D-F | | NEAR COLORLESS G-J | FAINT K-M | VERY LIGHT N-R | LIGHT S-Z | |
| CLARITY (10x) GRADING SCALE | FL | IF | VVS | VS | SI | I |
| | FLAWLESS INTERNALLY FLAWLESS | VERY VERY SLIGHTLY INCLUDED | VERY SLIGHTLY INCLUDED | SLIGHTLY INCLUDED | INCLUDED | |

The laboratory grown diamond described in this Report (Report) has been graded, tested, analyzed, examined and/or inscribed by International Gemological Institute (IGI). A laboratory grown diamond is one that has essentially the same chemical, physical and optical properties as a mined diamond, with the exception of being grown by man (a manufactured product). IGI employs and utilizes those techniques and equipment currently available to IGI, including, without limitation, 10X magnification, corrected triplet loupe, binocular microscope, master color comparison stones, non-contact-optical measuring device, Diamond Sure™, Diamond View™, Spectrophotometer and such other instruments and/or processes as deemed appropriate by IGI. This Report includes advanced security features. A duly accredited gemologist or jeweler can advise you with respect to the importance of and interrelationship between cut, color, clarity and carat weight.

© INTERNATIONAL GEMOLOGICAL INSTITUTE, INC.

07/29/2021

IGI Report Number

LG487172771

Shape and Cutting Style

**CUT CORNERED
RECTANGULAR MODIFIED
BRILLIANT**

Measurements

8.05 x 7.06 x 5.03 mm

GRADING RESULTS

Carat Weight

2.51 CARATS

Color Grade

E

Clarity Grade

SI 2

07/29/2021

IGI Report Number

LG487172771

Shape and Cutting Style

**CUT CORNERED
RECTANGULAR MODIFIED
BRILLIANT**

Measurements

8.05 x 7.06 x 5.03 mm

GRADING RESULTS

Carat Weight

2.51 CARATS

Color Grade

E

Clarity Grade

SI 2

ADDITIONAL GRADING INFORMATION

Polish

EXCELLENT

Symmetry

EXCELLENT

Fluorescence

NONE

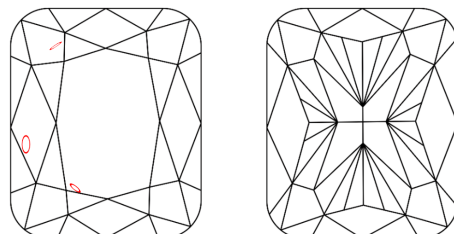
Inscription(s)

LABGROWN IGI LG487172771

Comments: As Grown - No indication of post-growth treatment.

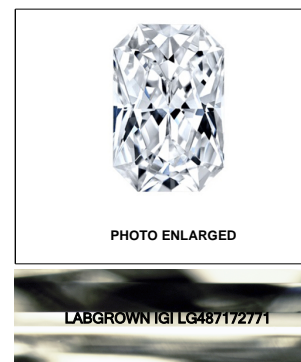
This Laboratory Grown Diamond was created by High Pressure High Temperature (HPHT) growth process. Type II

CLARITY CHARACTERISTICS

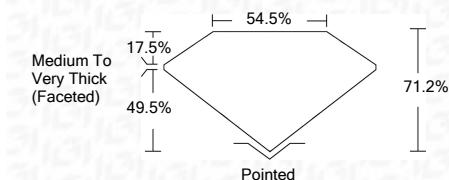


KEY TO SYMBOLS

Red symbols indicate internal characteristics.
Green symbols indicate external characteristics.



LASERSCRIBESM



ADDITIONAL GRADING INFORMATION

Polish

EXCELLENT

Symmetry

EXCELLENT

Fluorescence

NONE

Inscription(s)

LABGROWN IGI LG487172771

Comments: As Grown - No indication of post-growth treatment.

This Laboratory Grown Diamond was created by High Pressure High Temperature (HPHT) growth process. Type II



IGI

07/29/2021
IGI Report No. LG487172771
**CUT CORNERED RECT. MODIFIED
BRILLIANT**
8.05 x 7.06 x 5.03 mm
Carat Weight
Color Grade
Clarity Grade
Depth
Table
Girdle
Medium To Very Thick (Faceted)
Culet
Polish
Symmetry
Fluorescence
Inscription(s)
Comments:
As Grown - No indication of post-growth treatment.
This Laboratory Grown Diamond was created by High Pressure High Temperature (HPHT) growth process. Type II