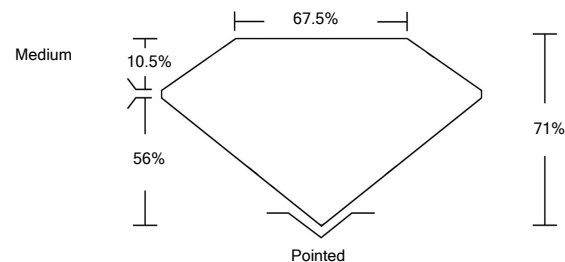




LG502139843

LABORATORY GROWN DIAMOND REPORT

PROPORTIONS



GRADING SCALES

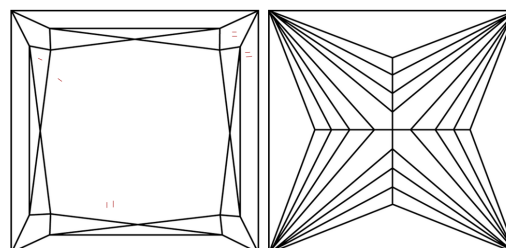
| COLOR GRADING SCALE | CL COLORLESS D-F | NC NEAR COLORLESS G-J | FT FAINT K-M | VLT VERY LIGHT N-R | LT LIGHT S-Z | |
|-----------------------------|--|--------------------------------|--|------------------------------------|----------------------------|---------------|
| CLARITY (10x) GRADING SCALE | FL FLAWLESS INTERNALLY FLAWLESS | IF INTERNAL FLAWLESS | VVS VERY VERY SLIGHTLY INCLUDED | VS VERY SLIGHTLY INCLUDED | SI SLIGHTLY INCLUDED | I INCLUDED |

The laboratory grown diamond described in this Report (Report) has been graded, tested, analyzed, examined and/or inscribed by International Gemological Institute (IGI). A laboratory grown diamond is one that has essentially the same chemical, physical and optical properties as a mined diamond, with the exception of being grown by man (a manufactured product). IGI employs and utilizes those techniques and equipment currently available to IGI, including, without limitation, 10X magnification, corrected triplet loupe, binocular microscope, master color comparison stones, non-contact-optical measuring device, Diamond Sure™, Diamond View™, Spectrophotometer and such other instruments and/or processes as deemed appropriate by IGI. This Report includes advanced security features. A duly accredited gemologist or jeweler can advise you with respect to the importance of and interrelationship between cut, color, clarity and carat weight.

THIS REPORT IS NEITHER A GUARANTEE, VALUATION, NOR APPRAISAL OF THE GEMSTONE DESCRIBED HEREIN. PLEASE REVIEW THE LIMITATIONS AND RESTRICTIONS SET FORTH ONLINE. FOR ADDITIONAL INFORMATION, IMPORTANT LIMITATIONS AND DISCLAIMERS, PLEASE GO TO WWW.IGI.ORG OR CALL 1-888-BUY-IGIS.

© INTERNATIONAL GEMOLOGICAL INSTITUTE, INC.

CLARITY CHARACTERISTICS



KEY TO SYMBOLS

Red symbols indicate internal characteristics.
Green symbols indicate external characteristics.

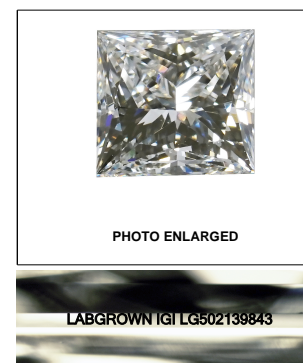


PHOTO ENLARGED

LABGROWN IGI LG502139843

LASERSCRIBESM

November 18, 2021

IGI Report Number

LG502139843

Description

**LABORATORY GROWN
DIAMOND**

Shape and Cutting Style

PRINCESS CUT

Measurements

5.83 X 5.82 X 4.13 MM

GRADING RESULTS

Carat Weight

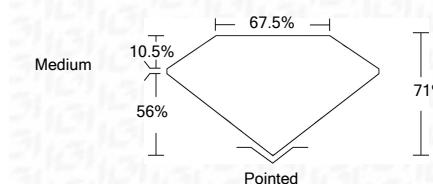
1.24 CARAT

Color Grade

D

Clarity Grade

VS 1



ADDITIONAL GRADING INFORMATION

Polish

EXCELLENT

Symmetry

VERY GOOD

Fluorescence

NONE

Inscription(s)

LABGROWN IGI LG502139843

Comments: As Grown - No indication of post-growth treatment.
This Laboratory Grown Diamond was created by High Pressure High Temperature (HPHT) growth process.
Type II

November 18, 2021

IGI Report Number

LG502139843

Description

**LABORATORY GROWN
DIAMOND**

Shape and Cutting Style

PRINCESS CUT

Measurements

5.83 X 5.82 X 4.13 MM

GRADING RESULTS

Carat Weight

1.24 CARAT

Color Grade

D

Clarity Grade

VS 1

ADDITIONAL GRADING INFORMATION

Polish

EXCELLENT

Symmetry

VERY GOOD

Fluorescence

NONE

Inscription(s)

LABGROWN IGI LG502139843

Comments: As Grown - No indication of post-growth treatment.

This Laboratory Grown Diamond was created by High Pressure High Temperature (HPHT) growth process.
Type II



IGI

| | | | | | | | | | | | | | | | |
|----------------------------|----------------------------|-----------------------|-----------------------|-------------|---------------|-------|-------|--------|--------|---------|-----------|--------------|----------------|--------------------------|---|
| November 18, 2021 | IGI Report No. LG502139843 | PRINCESS CUT | 5.83 X 5.82 X 4.13 MM | 1.24 CARAT | D | VS 1 | 71% | 67.5% | Medium | Pointed | EXCELLENT | VERY GOOD | NONE | LABGROWN IGI LG502139843 | Comments: As Grown - No indication of post-growth treatment. This Laboratory Grown Diamond was created by High Pressure High Temperature (HPHT) growth process. Type II |
| IGI Report No. LG502139843 | PRINCESS CUT | 5.83 X 5.82 X 4.13 MM | Carat Weight | Color Grade | Clarity Grade | Depth | Table | Girdle | Culet | Polish | Symmetry | Fluorescence | Inscription(s) | Comments: | As Grown - No indication of post-growth treatment. This Laboratory Grown Diamond was created by High Pressure High Temperature (HPHT) growth process. Type II |