



**ELECTRONIC COPY**

LG508138032

**LABORATORY GROWN DIAMOND REPORT**

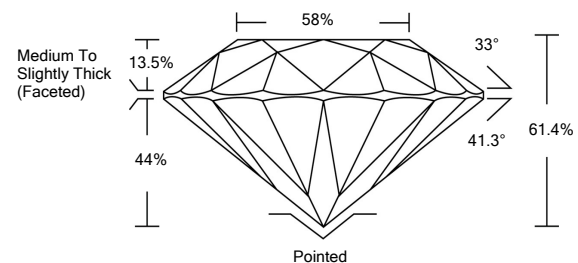
**GRADING SCALES**

| COLOR GRADING SCALE | CL            | NC                 | FT        | VLT            | LT        |
|---------------------|---------------|--------------------|-----------|----------------|-----------|
|                     | COLORLESS D-F | NEAR COLORLESS G-J | FAINT K-M | VERY LIGHT N-R | LIGHT S-Z |

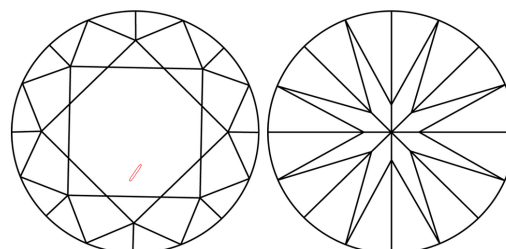
  

| CLARITY (10x) GRADING SCALE | FL                           | IF                          | VVS                    | VS                | SI       | I |
|-----------------------------|------------------------------|-----------------------------|------------------------|-------------------|----------|---|
|                             | FLAWLESS INTERNALLY FLAWLESS | VERY VERY SLIGHTLY INCLUDED | VERY SLIGHTLY INCLUDED | SLIGHTLY INCLUDED | INCLUDED |   |

**PROPORTIONS**

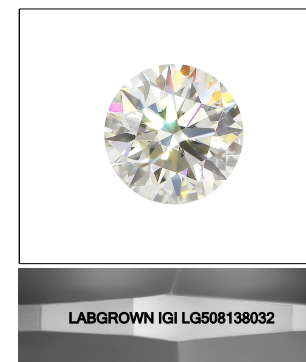


**CLARITY CHARACTERISTICS**



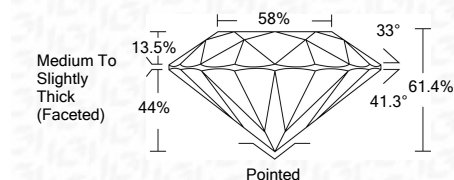
**KEY TO SYMBOLS**

Red symbols indicate internal characteristics.  
Green symbols indicate external characteristics.



LASERSCRIBE<sup>SM</sup>  
Sample Images Used

|                         |                                 |                    |
|-------------------------|---------------------------------|--------------------|
| January 4, 2022         | IGI Report Number               | <b>LG508138032</b> |
| Description             | <b>LABORATORY GROWN DIAMOND</b> |                    |
| Shape and Cutting Style | <b>ROUND BRILLIANT</b>          |                    |
| Measurements            | <b>7.32 - 7.39 X 4.52 MM</b>    |                    |
| <b>GRADING RESULTS</b>  | Carat Weight                    | <b>1.50 CARAT</b>  |
|                         | Color Grade                     | <b>D</b>           |
|                         | Clarity Grade                   | <b>VS 2</b>        |
|                         | Cut Grade                       | <b>IDEAL</b>       |



|                                       |                                 |
|---------------------------------------|---------------------------------|
| <b>ADDITIONAL GRADING INFORMATION</b> |                                 |
| Polish                                | <b>EXCELLENT</b>                |
| Symmetry                              | <b>EXCELLENT</b>                |
| Fluorescence                          | <b>NONE</b>                     |
| Inscription(s)                        | <b>LABGROWN IGI LG508138032</b> |

Comments: As Grown - No indication of post-growth treatment.  
This Laboratory Grown Diamond was created by High Pressure High Temperature (HPHT) growth process.  
Type II

|                                       |                                 |                    |
|---------------------------------------|---------------------------------|--------------------|
| January 4, 2022                       | IGI Report Number               | <b>LG508138032</b> |
| Description                           | <b>LABORATORY GROWN DIAMOND</b> |                    |
| Shape and Cutting Style               | <b>ROUND BRILLIANT</b>          |                    |
| Measurements                          | <b>7.32 - 7.39 X 4.52 MM</b>    |                    |
| <b>GRADING RESULTS</b>                | Carat Weight                    | <b>1.50 CARAT</b>  |
|                                       | Color Grade                     | <b>D</b>           |
|                                       | Clarity Grade                   | <b>VS 2</b>        |
|                                       | Cut Grade                       | <b>IDEAL</b>       |
| <b>ADDITIONAL GRADING INFORMATION</b> |                                 |                    |
| Polish                                | <b>EXCELLENT</b>                |                    |
| Symmetry                              | <b>EXCELLENT</b>                |                    |
| Fluorescence                          | <b>NONE</b>                     |                    |
| Inscription(s)                        | <b>LABGROWN IGI LG508138032</b> |                    |

Comments: As Grown - No indication of post-growth treatment.  
This Laboratory Grown Diamond was created by High Pressure High Temperature (HPHT) growth process.  
Type II



**IGI**

|  |                            |             |               |           |       |       |        |                                    |         |           |           |              |                          |
|--|----------------------------|-------------|---------------|-----------|-------|-------|--------|------------------------------------|---------|-----------|-----------|--------------|--------------------------|
| January 4, 2022  | IGI Report No. LG508138032 | 1.50 CARAT  | D             | VS 2      | IDEAL | 61.4% | 58%    | Medium To Slightly Thick (Faceted) | Pointed | EXCELLENT | EXCELLENT | NONE         | LABGROWN IGI LG508138032 |
| ROUND BRILLIANT  | 7.32 - 7.39 X 4.52 MM      | Color Grade | Clarity Grade | Cut Grade | Depth | Table | Girdle |                                    |         | Polish    | Symmetry  | Fluorescence | Inscription(s)           |
| <p>Comments: As Grown - No indication of post-growth treatment.<br/>This Laboratory Grown Diamond was created by High Pressure High Temperature (HPHT) growth process.<br/>Type II</p> |                            |             |               |           |       |       |        |                                    |         |           |           |              |                          |