



**INTERNATIONAL  
GEMOLOGICAL  
INSTITUTE**

**LABORATORY GROWN DIAMOND REPORT**

**IGI LABORATORY GROWN DIAMOND IDENTIFICATION REPORT**

February 15, 2022  
 IGI Report Number LG515217508  
 Description LABORATORY GROWN DIAMOND  
 Shape and Cutting Style OVAL BRILLIANT  
 Measurements 7.24 X 5.37 X 3.54 MM

**GRADING RESULTS**

Carat Weight 0.90 CARAT  
 Color Grade E  
 Clarity Grade VS 1

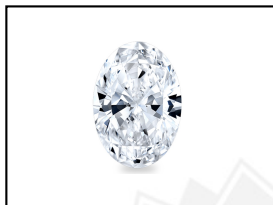
**ADDITIONAL GRADING INFORMATION**

Polish VERY GOOD  
 Symmetry GOOD  
 Fluorescence NONE  
 Inscription(s) LABGROWN IGI LG515217508

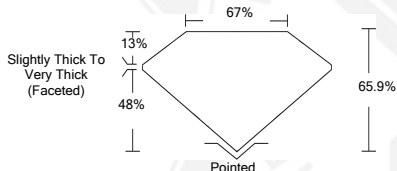
Comments: As Grown - No indication of post-growth treatment.  
 This Laboratory Grown Diamond was created by High Pressure High Temperature (HPHT) growth process.  
 Type II

**ELECTRONIC COPY LABORATORY GROWN  
DIAMOND REPORT**

**LG515217508**



**LASERScribe<sup>SM</sup>**  
Sample Images Used



**IGI LABORATORY GROWN  
DIAMOND ID REPORT**

February 15, 2022  
 IGI Report Number LG515217508  
**OVAL BRILLIANT**  
**7.24 X 5.37 X 3.54 MM**  
 Carat Weight 0.90 CARAT  
 Color Grade E  
 Clarity Grade VS 1  
 Polish VERY GOOD  
 Symmetry GOOD  
 Fluorescence NONE  
 Inscription(s) LABGROWN IGI LG515217508

Comments: As Grown - No indication of post-growth treatment.  
 This Laboratory Grown Diamond was created by High Pressure High Temperature (HPHT) growth process.  
 Type II

**IGI LABORATORY GROWN  
DIAMOND ID REPORT**

February 15, 2022  
 IGI Report Number LG515217508  
**OVAL BRILLIANT**  
**7.24 X 5.37 X 3.54 MM**  
 Carat Weight 0.90 CARAT  
 Color Grade E  
 Clarity Grade VS 1  
 Polish VERY GOOD  
 Symmetry GOOD  
 Fluorescence NONE  
 Inscription(s) LABGROWN IGI LG515217508

Comments: As Grown - No indication of post-growth treatment.  
 This Laboratory Grown Diamond was created by High Pressure High Temperature (HPHT) growth process.  
 Type II

THIS DOCUMENT WAS PRODUCED WITH THE FOLLOWING SECURITY MEASURES: SPECIAL DOCUMENT PAPER, INK SCREENS, WATERMARK, BACKGROUND DESIGN, HOLOGRAM AND OTHER SECURITY FEATURES NOT LISTED AND DO EXCEEDED DOCUMENT SECURITY INDUSTRY GUIDELINES.

For Terms & Conditions and to verify this report, please visit [www.igi.org](http://www.igi.org)