



LABORATORY GROWN DIAMOND REPORT

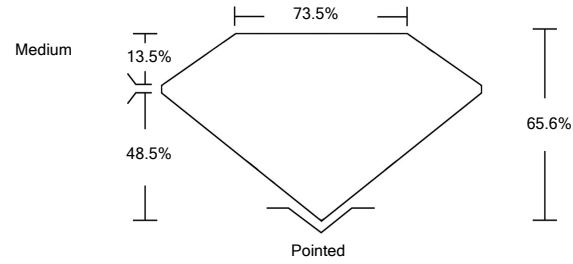
LG478125268

GRADING SCALES

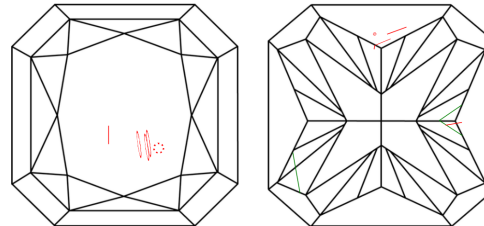
Table with 2 columns: COLOR GRADING SCALE and CLARITY (10x) GRADING SCALE. Rows include CL, NC, FT, VLT, LT and FL, IF, VVS, VS, SI, I.

The laboratory grown diamond described in this Report (Report) has been graded, tested, analyzed, examined and/or inscribed by International Gemological Institute (IGI). A laboratory grown diamond is one that has essentially the same chemical, physical and optical properties as a mined diamond...

PROPORTIONS

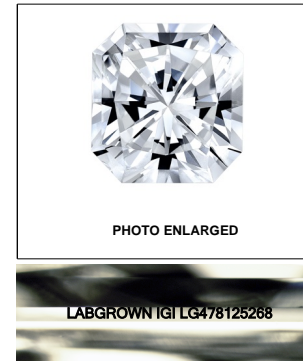


CLARITY CHARACTERISTICS



KEY TO SYMBOLS

Red symbols indicate internal characteristics. Green symbols indicate external characteristics.



LASERSCRIBE SM

06/17/2021

IGI Report Number LG478125268

Shape and Cutting Style CUT CORNERED SQUARE MODIFIED BRILLIANT

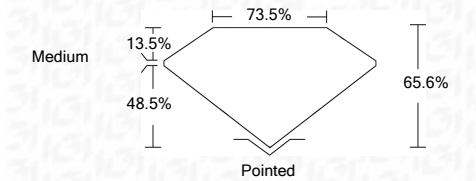
Measurements 6.98 x 6.94 x 4.55 mm

GRADING RESULTS

Carat Weight 2.02 CARATS

Color Grade F

Clarity Grade SI 2



ADDITIONAL GRADING INFORMATION

Polish VERY GOOD

Symmetry GOOD

Fluorescence NONE

Inscription(s) LABGROWN IGI LG478125268

Comments: As Grown - No indication of post-growth treatment.

This Laboratory Grown Diamond was created by High Pressure High Temperature (HPHT) growth process. Type II



IGI Report No. LG478125268
CUT CORNERED SQUARE MODIFIED BRILLIANT
6.98 x 6.94 x 4.55 mm
2.02 CARATS
F
SI 2
65.6%
73.5%
Medium
Pointed
VERY GOOD
GOOD
NONE
LABGROWN IGI LG478125268

As Grown - No indication of post-growth treatment. This Laboratory Grown Diamond was created by High Pressure High Temperature (HPHT) growth process. Type II

