



**INTERNATIONAL  
GEMOLOGICAL  
INSTITUTE**

**LABORATORY GROWN DIAMOND REPORT**

**IGI LABORATORY GROWN DIAMOND IDENTIFICATION REPORT**

April 1, 2022  
 IGI Report Number LG523276163  
 Description LABORATORY GROWN DIAMOND  
 Shape and Cutting Style ROUND BRILLIANT  
 Measurements 5.12 - 5.15 X 3.15 MM

**GRADING RESULTS**

Carat Weight 0.51 CARAT  
 Color Grade D  
 Clarity Grade VVS 2  
 Cut Grade IDEAL

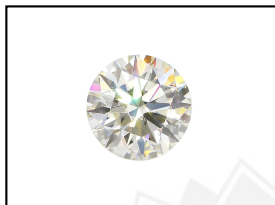
**ADDITIONAL GRADING INFORMATION**

Polish EXCELLENT  
 Symmetry EXCELLENT  
 Fluorescence NONE  
 Inscription(s) LABGROWN IGI LG523276163

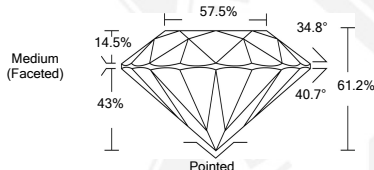
Comments: HEARTS & ARROWS  
 As Grown - No indication of post-growth treatment.  
 This Laboratory Grown Diamond was created by High Pressure High  
 Temperature (HPHT) growth process.  
 Type II

**ELECTRONIC COPY LABORATORY GROWN  
DIAMOND REPORT**

**LG523276163**



**LASERSCRIBE<sup>SM</sup>**  
Sample Images Used



**IGI LABORATORY GROWN  
DIAMOND ID REPORT**

April 1, 2022  
 IGI Report Number **LG523276163**  
**ROUND BRILLIANT**  
**5.12 - 5.15 X 3.15 MM**  
 Carat Weight 0.51 CARAT  
 Color Grade D  
 Clarity Grade VVS 2  
 Cut Grade IDEAL  
 Polish EXCELLENT  
 Symmetry EXCELLENT  
 Fluorescence NONE  
 Inscription(s) LABGROWN IGI  
 LG523276163

Comments: HEARTS & ARROWS  
 As Grown - No indication of post-growth treatment.  
 This Laboratory Grown Diamond was created by High Pressure High  
 Temperature (HPHT) growth process.  
 Type II

**IGI LABORATORY GROWN  
DIAMOND ID REPORT**

April 1, 2022  
 IGI Report Number **LG523276163**  
**ROUND BRILLIANT**  
**5.12 - 5.15 X 3.15 MM**  
 Carat Weight 0.51 CARAT  
 Color Grade D  
 Clarity Grade VVS 2  
 Cut Grade IDEAL  
 Polish EXCELLENT  
 Symmetry EXCELLENT  
 Fluorescence NONE  
 Inscription(s) LABGROWN IGI  
 LG523276163

Comments: HEARTS & ARROWS  
 As Grown - No indication of post-growth treatment.  
 This Laboratory Grown Diamond was created by High Pressure High  
 Temperature (HPHT) growth process.  
 Type II

THIS DOCUMENT WAS PRODUCED WITH THE FOLLOWING SECURITY MEASURES: SPECIAL DOCUMENT PAPER, INK SCREENS, WATERMARK, BACKGROUND DESIGN, HOLOGRAM AND OTHER SECURITY FEATURES NOT LISTED AND DO EXCEED DOCUMENT SECURITY INDUSTRY GUIDELINES.

For Terms & Conditions and to verify this report, please visit [www.igi.org](http://www.igi.org)